



# COOSA WMA

The Coosa WMA: Cahaba & Columbiana Tract in Coosa County consists of 9,746 acres of Mountain Longleaf habitat interspersed by hardwood drains within the Weogufka and Hatchet Creek watersheds. All of the land lies within the Coosa Wildlife Management Area, one of Alabama's oldest established public hunting areas. The property also hosts one of the last remaining populations of red-cockaded woodpeckers outside of Alabama's National Forest system.

Recreational opportunities include hunting, fishing, hiking (coming soon) and canoeing.

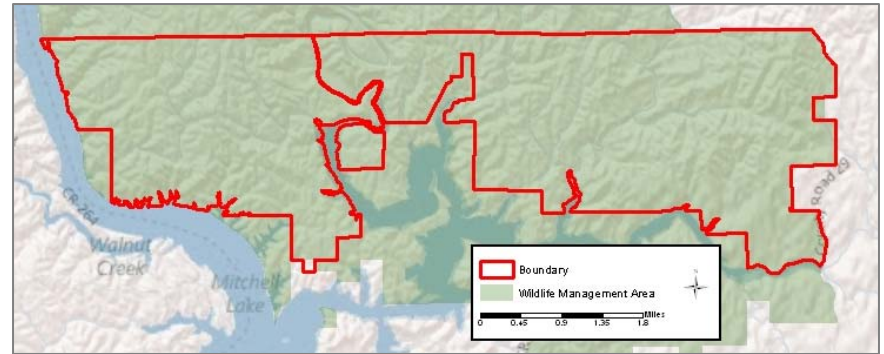
## Directions:

From Clanton, take US 31 South approximately 4 miles to AL-22. Turn left on AL-22 and travel approximately 12.8 miles to Coosa Co. Rd. 29. Turn left on Co. Rd. 29 and go approximately 6 miles. The check-in station is near the junction of Co. Rd. 29 and Co. Rd. 15.

From Alexander City, take AL-22 approximately 22 miles to Coosa Co. Rd. 29. Turn left onto Co. Rd. 29 and follow the above directions to the check-in station.

## Coordinates for the check-in station:

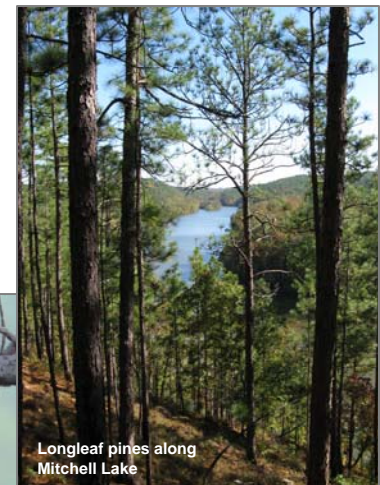
N 32.929678  
W -86.347569



Coral Snake

Coral Snakes (*Micrurus fulvius*) are generally found in the Lower Coastal Plain of Alabama. However, the species has been observed in Bibb, Coosa and Talladega Counties. The individual to the left was photographed on the Coosa WMA in 2009.

Coral snakes are venomous and should not be handled. To tell a Coral Snake apart from one of its mimics, remember the saying, "Red on yellow, kill a fellow. Red on black, friend of Jack".



Longleaf pines along Mitchell Lake

The Red-cockaded Woodpecker (*Picoides borealis*), a federally endangered species, builds cavities in mature, living pine trees, normally longleaf pines. As the longleaf pine forests have declined, so to have the numbers of Red-cockaded Woodpeckers.



Red-cockaded Woodpecker