

Summary of Alabama's 2015 Mandatory Red Snapper Reporting Program



Program Overview:

Beginning in 2014, captains of recreational vessels were required to report any harvested red snapper before landing fish in Alabama per 220-3-.83 – “Recreational Reporting of Red Snapper”.

Only one report is required per vessel trip with red snapper.

Anglers can report via smartphone app (“Snapper Check”), online, toll-free telephone number (844-RED-SNAP), or paper reports provided at select public boat launches.

Required information includes; number of anglers, fish harvested and dead discards, vessel registration, county of landing, type of trip (private or charter), and trip access type (private or public).

Marine Resources Division staff (biological and enforcement) sampled vessels with red snapper during the state and federal red snapper seasons to determine reporting compliance rates and collect biological information. Vessel captains are still required to report red snapper landings even if catch is sampled by ADCNR/MRD staff.



Results:

Summary of reported trip information, trip correction factors, and landings estimates for the 2015 federal and state red snapper seasons (May 23-July 31)

Fishing Mode	Season ¹	Reported No. of Anglers	Reported No. of Fish Landed	Reported No. of Dead Discards	Reported No. of Harvested Fish	Trip Correction Factor ²	Estimated No. of Harvested Fish	Estimated Mean Weight (lbs)	Estimated Pounds Harvested
Charter	Federal (June 1 - July 14)	16,146	31,546	1,359	32,905	1.443	47,491	8.13	386,090
Charter	State (AL & FL seasons)	38	73	0	73	1.500	109	3.31	361
Private	Federal (June 1 - June 10)	10,050	18,025	1,947	19,972	3.713	74,149	8.259	612,425
Private	State (AL & FL seasons)	888	1,252	151	1,403	5.746	8,061	5.438	46,167
TOTALS:		27,122	50,896	3,457	54,353	2.388	129,810	8.05	1,045,042

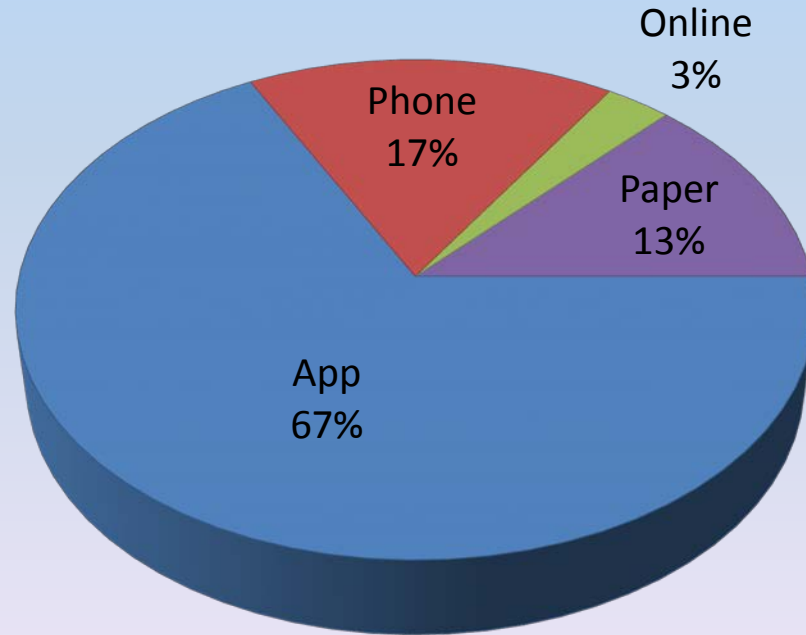
¹ – State seasons comprised of days when only state waters were open to red snapper harvest (federal waters were closed).

² - Estimates may not calculate exactly due to rounding. Trip correction factor includes adjustments for trip non-reporting and under/over-reporting of number of anglers and fish harvested as derived from comparisons of reported data to validation data for the same vessel.



Results:

Reporting methods used by charter and private vessel captains during the 2015 season (May 23 –July 31)

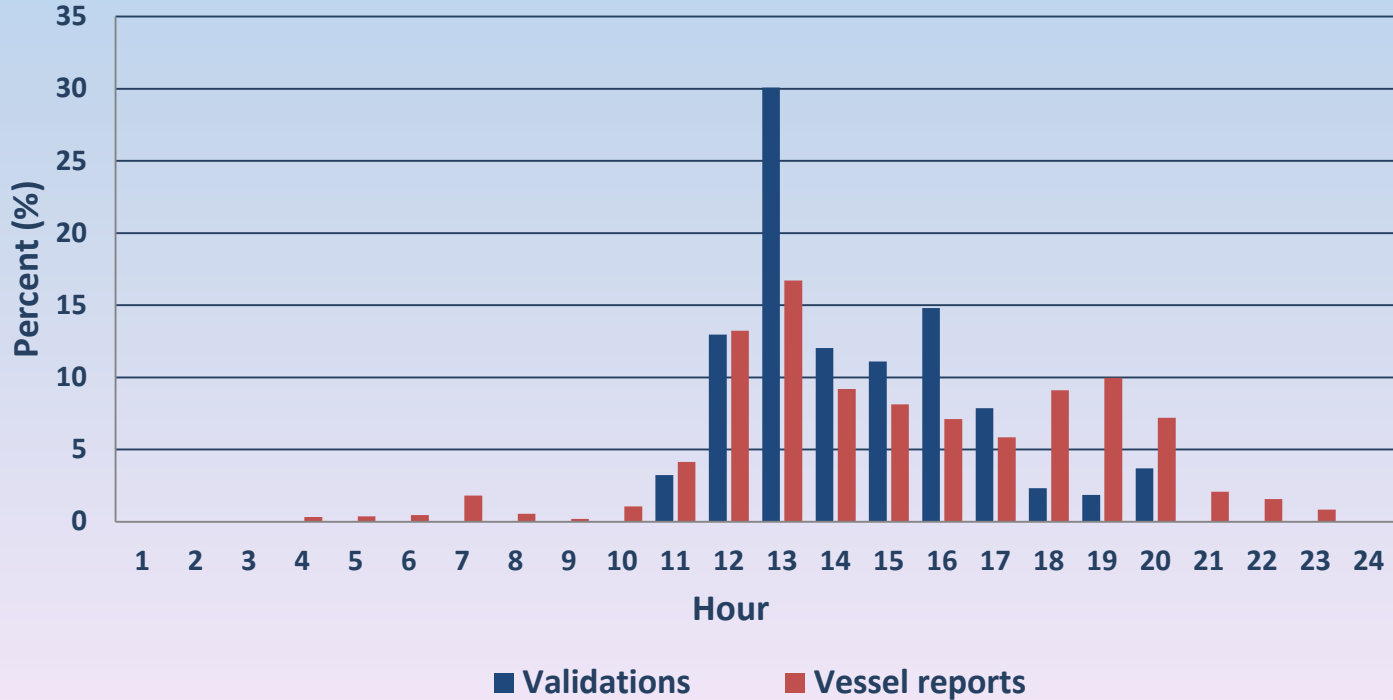


Total reports = 4,404



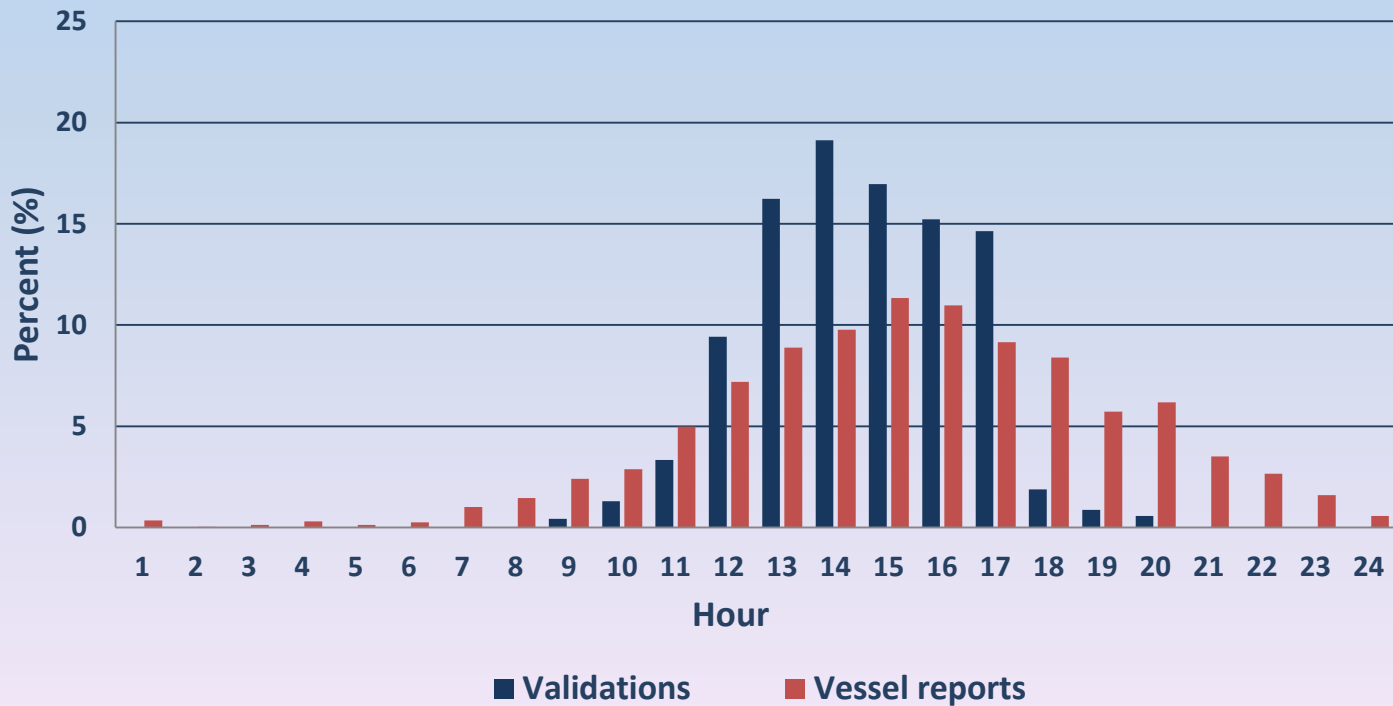
Results:

Percent frequencies for time of vessel validations and vessel report submissions for Charter fishing mode during the 2015 red snapper season (May 23-July 31)



Results:

Percent frequencies for time of vessel validations and vessel report submissions for Private fishing mode during the 2015 red snapper season (May 23-July 31)



Results:

Number of reports submitted by mode and county of landing

Fishing Mode	Baldwin Co.	Mobile Co.	Totals
Charter	2,020	156	2,176
Private	1,322	906	2,228
Totals:	3,342	1,061	4,404



Results:

Number of private vessel reports by reported county of landing and access type

County Landed	Private Access Site	Public Access Site	Totals	% of Total by County
Baldwin	607	613	1,220	60.4
Mobile	187	614	801	39.6
Totals	794	1,227	2,021	100.0
% of Total By Access Type	39.3	60.7	100.0	



Estimates comparison: 2014-2015

Red snapper harvest estimates from Alabama's Snapper Check program and the Federal Marine Recreational Information Program (MRIP)

Fishing Mode	2014 Alabama Estimates (lbs)	2014 Federal Estimates (lbs)	2015 Alabama Estimates (lbs)*	2015 Federal Estimates (lbs)*
Charter	149,428	143,852	386,451	789,291
Private	306,094	1,083,617	658,592	1,566,190
TOTALS:	455,522	1,227,469	1,045,042	2,355,481

Alabama's harvest estimate for 2014 is 63% less than the federal estimate and for 2015 Alabama's harvest estimate is 56% less than the federal estimate.

* - Landings estimates are through August 31st and are considered preliminary.



Looking Ahead:

ADCNR/MRD plans to continue the reporting requirement for charter and private vessels landing red snapper in 2016. However, an alternative reporting method for charter vessels is being investigated and it may be used in place of Snapper Check.

In 2015, reporting compliance was approximately 25% among private recreational vessels and 68% for charter vessels. ADCNR/MRD staff will continue educating the public about the reporting requirement and step up enforcement of the requirement.

ADCNR/MRD staff will work towards certification of Snapper Check as a federally accepted method for calculating red snapper harvest in Alabama.

