



# 2026 ALABAMA WILD TURKEY BROOD SURVEY

How was the hatch? Help ADCNR find out by participating in the statewide wild turkey brood survey and report all turkeys you see during your normal daily activities during the summer months of **June 1 to August 31 ONLY**.

We're interested in observations of hens with and without poults, and male birds (jakes and gobblers) from all regions of the state, including rural and developed areas. When reporting numbers of poults, be sure to look carefully because they may be difficult to see in tall vegetation.

This survey is conducted annually to learn more about annual nesting success, brood survival, and distribution and abundance of wild turkeys.

Thank you for your continued participation in wild turkey surveys.



**REPORTING BETWEEN**

**JUN**

**1**

**TO**

**AUG**

**31**

**THESE DATES ONLY**

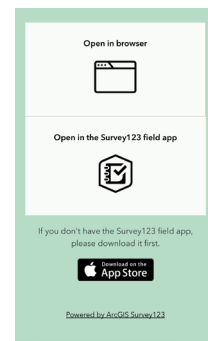
## Data Recording and Online Reporting Instructions

Survey participants will have three options for reporting wild turkey observations:

1. **Mobile Phone App** – Participants can download the mobile Survey123 app from their mobile phone's app store and download the survey to the app (instructions below).
2. **Web Browser** – Click [HERE](#) or type <https://arcg.is/1Tq4Wv1> to complete the survey on your computer's web browser.
3. **Paper Form** – In the field, you are welcome to continue using the paper form attached below to record observations. However, observations will need to be submitted using the Survey123 link on your computer's web browser.

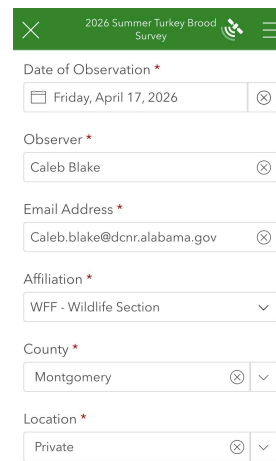
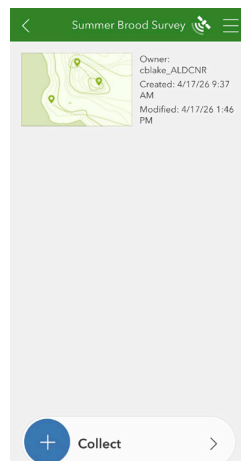
## Instructions for Downloading ArcGIS Survey123 on Your Mobile Phone

1. Download the **ArcGIS Survey 123** app from your device's app store.
2. You are NOT required to have an account to log in and use Survey123. On the login page, you can select the option **"Continue without signing in."** However, if you have a state-assigned ESRI account, feel free to log in.
3. Once the app is downloaded, you can either click the link or scan the QR code (camera access must be enabled for Survey123). (<https://arcg.is/1Tq4Wv1>)
4. The link will take you to your default web browser. From there, you can either select **"Open in browser"** or **"Open in the Survey123 field app."** Click the option to open in the Survey123 field app.
5. Once you have downloaded the survey into the Survey123 field app, it will automatically show up every time you open it, even if you select the "Continue without signing in" option.



## Instructions for Using ArcGIS Survey123 on Your Mobile Phone to Record Observations

1. When you are ready to record an observation, click on the Summer Brood Survey on the home screen of the mobile app. Then click the button that says **"Collect."** Once opened, begin filling out the required information. Under **"Affiliation,"** please indicate your agency affiliation, or select "private citizen" if you are a member of the public. For county and location, you can either use the dropdown menu and scroll or begin typing then select the appropriate option.



2026 Summer Turkey Brood Survey

Date of Observation \*  
Friday, April 17, 2026

Observer \*  
Caleb Blake

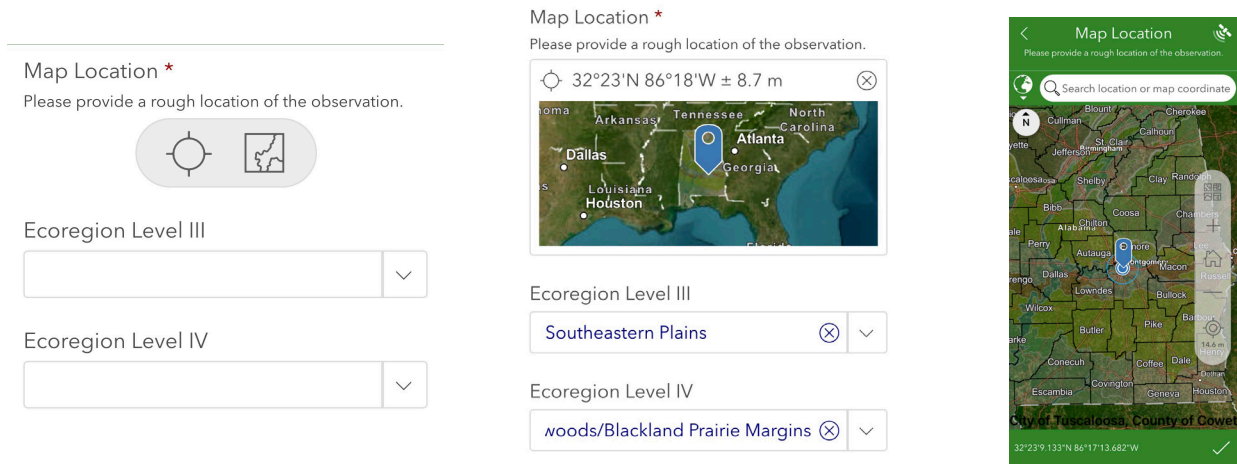
Email Address \*  
Caleb.blake@dcnr.alabama.gov

Affiliation \*  
WFF - Wildlife Section

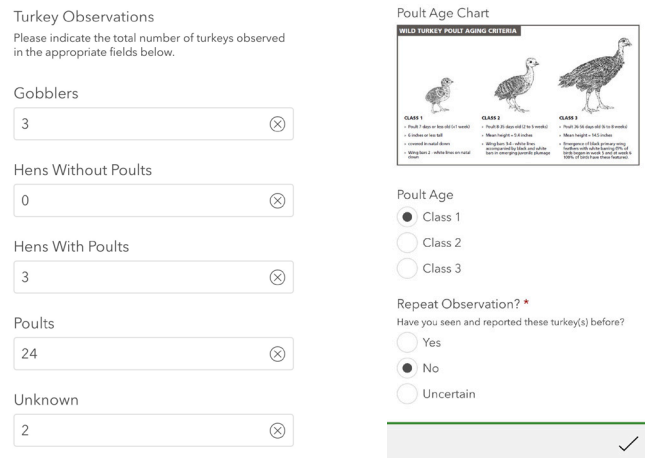
County \*  
Montgomery

Location \*  
Private

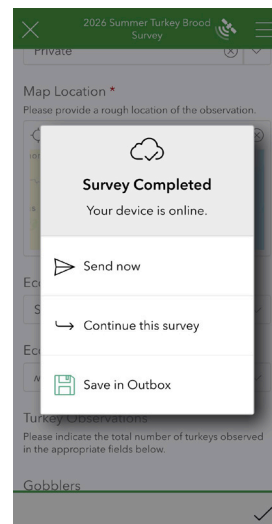
- Under the “Map Location” question, you can either click the circle and crosshair button to share your current location, or you can click the map button to manually click the rough location of the observation. When the location is shared, the Level III and IV Ecoregions will automatically populate, as seen below. **Location sharing is solely for identifying Ecoregions and will NOT be shared or made public.**



- Next, you will simply record the number of turkeys observed in the appropriate fields. Each field is set to 0 by default. If poults are observed, please classify them using the “Poult Age Chart” in the survey as a guide. If you believe the observed turkey(s) have been reported before, please indicate so by selecting “yes” under the “Repeated Observations?” question. For example, if you see the same brood in your backyard each morning, you may record it more than once, but please mark it as a repeat.

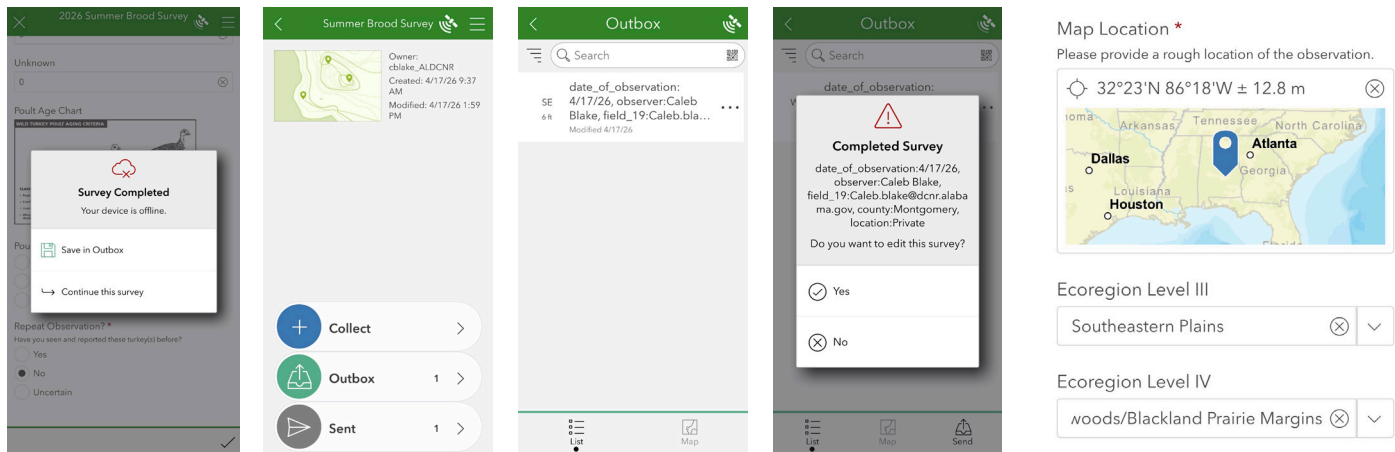


- Finally, once you have completed the survey, click the green check mark at the bottom right corner of the screen. If you are ready to submit the survey, you can click “Send now,” and you’re done. If you do not wish to submit it yet, you can save it in your outbox to submit later. Once submitted, your observation has been recorded, and you are done!



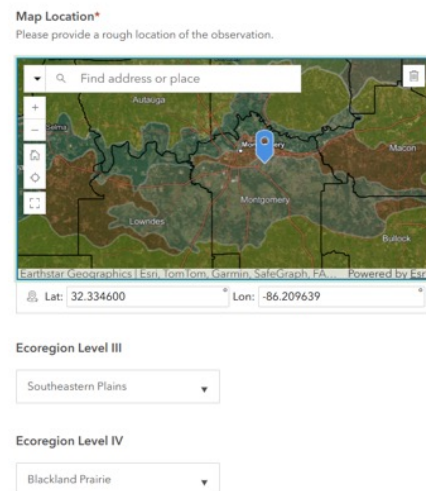
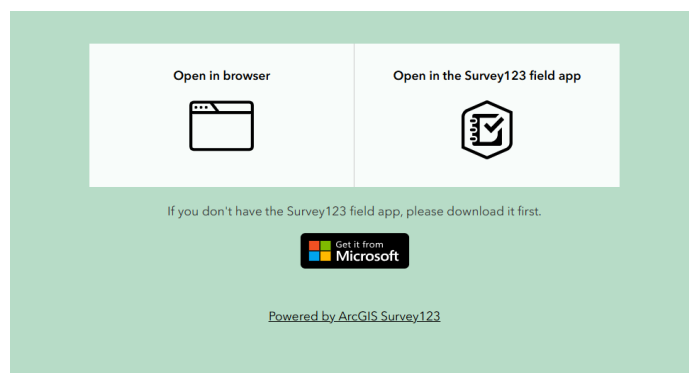
## Offline Use

- If you are in a location where you do not have internet access, you can fill out the survey offline. Most of the survey will be filled out the exact same way as you would online. However, ecoregions will not automatically populate offline, but you can still mark your location via satellite. Once you have completed the form and marked your location, you will not be able to submit until you are reconnected to the internet. When you click the green check mark, you will need to select "Save in outbox." Then, once you are back online, open the saved survey from the outbox, and the ecoregions will now automatically populate. Once you have done this, you may now submit the survey.



## Instructions for Using ArcGIS Survey123 on A Web Browser to Record Observations

- Recording observations on your computer's web browser is mostly the same as the app. Once you click on the shared link, select the option "**Open in browser.**"



- Fill out all the required and relevant fields as you would on the mobile app. The primary difference is using the map to mark the location of the observation. You can either click the circle and cross hair button to share your current location (less applicable on the computer), or you can use the interactive map to zoom in and click the location of the observation. Once selected, the ecoregions will automatically populate.

## Instructions for Using the Paper Form to Record Observations

1. Participants still have the option to print out a physical paper form to record turkey observations during the survey period. To do so, please print out the attached data sheet below.
2. For county and location numbers, please refer to the county and location code sheet below (ex. Autauga County = 4, C.D. Kelley-Autauga = 5). For the ecoregion, please reference the ecoregion map below and estimate as best as possible which ecoregion the observation was located (ex. Southeastern Plains – Blackland Prairie = 65a).
3. Record all turkeys observed in the field under the appropriate columns.
4. Record the poults' age class by referencing the aging criteria graphic below.
5. If you believe the turkey(s) have been observed before, please indicate this in the final column. If you are uncertain, please write "uncertain."
6. On the bottom of the sheet, please write your name and email address.
7. All paper survey forms need to be submitted by going to the link below and transferring the data to the online survey form following the instructions above. **Please do not mail or email the survey form back. Each row of observations should be submitted as an individual online form.** (<https://arcg.is/1Tq4Wv1>)
8. If you do not remember the exact location of the observation (or you are entering the form on behalf of someone else), simply mark the location on the interactive map that is within the ecoregion recorded on the form.

## General Notes

- Record each observation separately.
- Do not record the same brood more than once within an hour of the initial observation.
- Classify all hens as "with poults" or "without poults."
- Use the "unknown" category if unsure of identification.
- The deadline for completing online reporting is **September 10**.
- Results will be summarized and made available in the annual Alabama Wild Turkey Report.
- Contact Caleb Blake at [caleb.blake@dcnr.alabama.gov](mailto:caleb.blake@dcnr.alabama.gov) for any questions about brood survey reporting.

## WILD TURKEY POULT AGING CRITERIA



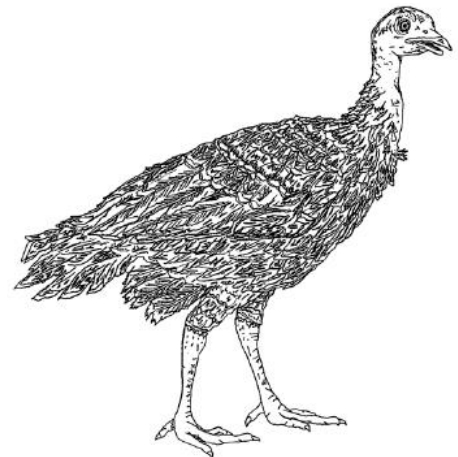
### CLASS 1

- » Poult 7-days or less old (<1 week)
- » 6 inches or less tall
- » covered in natal down
- » Wing bars 2 - white lines on natal down



### CLASS 2

- » Poult 8-35 days old (2 to 5 weeks)
- » Mean height = 9.4 inches
- » Wing bars 3-4 - white lines accompanied by black and white bars in emerging juvenile plumage



### CLASS 3

- » Poult 36-56 days old (6 to 8 weeks)
- » Mean height = 14.5 inches
- » Emergence of black primary wing feathers with white barring (9% of birds began in week 5 and at week 6 100% of birds have these features).



## County and Location Key Sheet

County	Key #
Jefferson	1
Mobile	2
Montgomery	3
Autauga	4
Baldwin	5
Barbour	6
Bibb	7
Blount	8
Bullock	9
Butler	10
Calhoun	11
Chambers	12
Cherokee	13
Chilton	14
Choctaw	15
Clarke	16
Clay	17

County	Key #
Cleburne	18
Coffee	19
Colbert	20
Conecuh	21
Coosa	22
Covington	23
Crenshaw	24
Cullman	25
Dale	26
Dallas	27
DeKalb	28
Elmore	29
Escambia	30
Etowah	31
Fayette	32
Franklin	33
Geneva	34

County	Key #
Greene	35
Hale	36
Henry	37
Houston	38
Jackson	39
Lamar	40
Lauderdale	41
Lawrence	42
Lee	43
Limestone	44
Lowndes	45
Macon	46
Madison	47
Marengo	48
Marion	49
Marshall	50
Monroe	51

County	Key #
Morgan	52
Perry	53
Pickens	54
Pike	55
Randolph	56
Russell	57
Shelby	58
Saint Clair	59
Sumter	60
Talladega	61
Tallapoosa	62
Tuscaloosa	63
Walker	64
Washington	65
Wilcox	66
Winston	67

Location	Key #
Barbour	1
Black Warrior	2
Blue Spring	3
Boggy Hollow	4
C.D. Kelley-Autauga	5
Cedar Creek	6
Choccolocco	7
Coosa	8
Crow, Mud, & Raccoon Creek	9
N. Sauty & R.Creek Refuges	10
David K. Nelson	11
Fred T. Stimpson	12
Freedom Hills	13
Geneva State Forest	14
Gothard-AWF Yates Lake	15
Grand Bay Savanna	16
Hollins	17
J.D. Martin-Skyline	18
Lauderdale	19
Little River	20

Location	Key #
Lowndes	21
Martin	22
Mobile-Tenesaw & W.L. Holland	23
Mulberry Fork	24
Oakmulgee	25
Perdido River	26
Portland Landing	27
Riverton	28
Seven-Mile Island	29
S.R. Murphy	30
Uchee Creek	31
Upper State	33
W.R. Ireland-Cahaba River	34
Thigpin Hill	35
Red Hills	36
Little River State Forest	37
Blackwater River	38
Hunting Club	39
Private	40
Public	41

# Level III and IV Ecoregions of Alabama

