

This map permit is your 2019-2020 Seasonal Permit to hunt all game in accordance with the seasons, rules, and regulations listed hereon. EXCEPT for gun deer, and primitive weapons deer hunting. A separate gun deer and primitive weapons deer hunting permit will be issued at the checking station on the dates of these hunts. This permit must be signed and in your possession to be valid.

Signed  
A separate trapping permit will be issued by the area manager.



ALABAMA CHAPTER



FOREVER WILD LAND TRUST



**SPECIAL BUCK HARVEST SIZE RESTRICTIONS APPLY**

**Potential Prescribed Burn Units**

THE DEPARTMENT OF CONSERVATION AND NATURAL RESOURCES DOES NOT DISCRIMINATE ON THE BASIS OF RACE, COLOR, RELIGION, AGE, SEX, NATIONAL ORIGIN, DISABILITY, PREGNANCY, GENETIC INFORMATION OR VETERAN STATUS IN ITS HIRING OR EMPLOYMENT PRACTICES NOR IN ADMISSION TO, ACCESS TO, OR OPERATIONS OF ITS PROGRAMS, SERVICES OR ACTIVITIES.

THIS IS NOT A SURVEY. BOUNDARIES REFLECT INFORMATION PROVIDED AT THE DATE OF REVISION. THE ALABAMA DEPARTMENT OF CONSERVATION CANNOT ACCEPT RESPONSIBILITY FOR INACCURACIES RESULTING FROM UNOBTAINABLE OR UNKNOWN DATA. THIS PUBLICATION IS AVAILABLE IN ALTERNATIVE FORMATS UPON REQUEST.

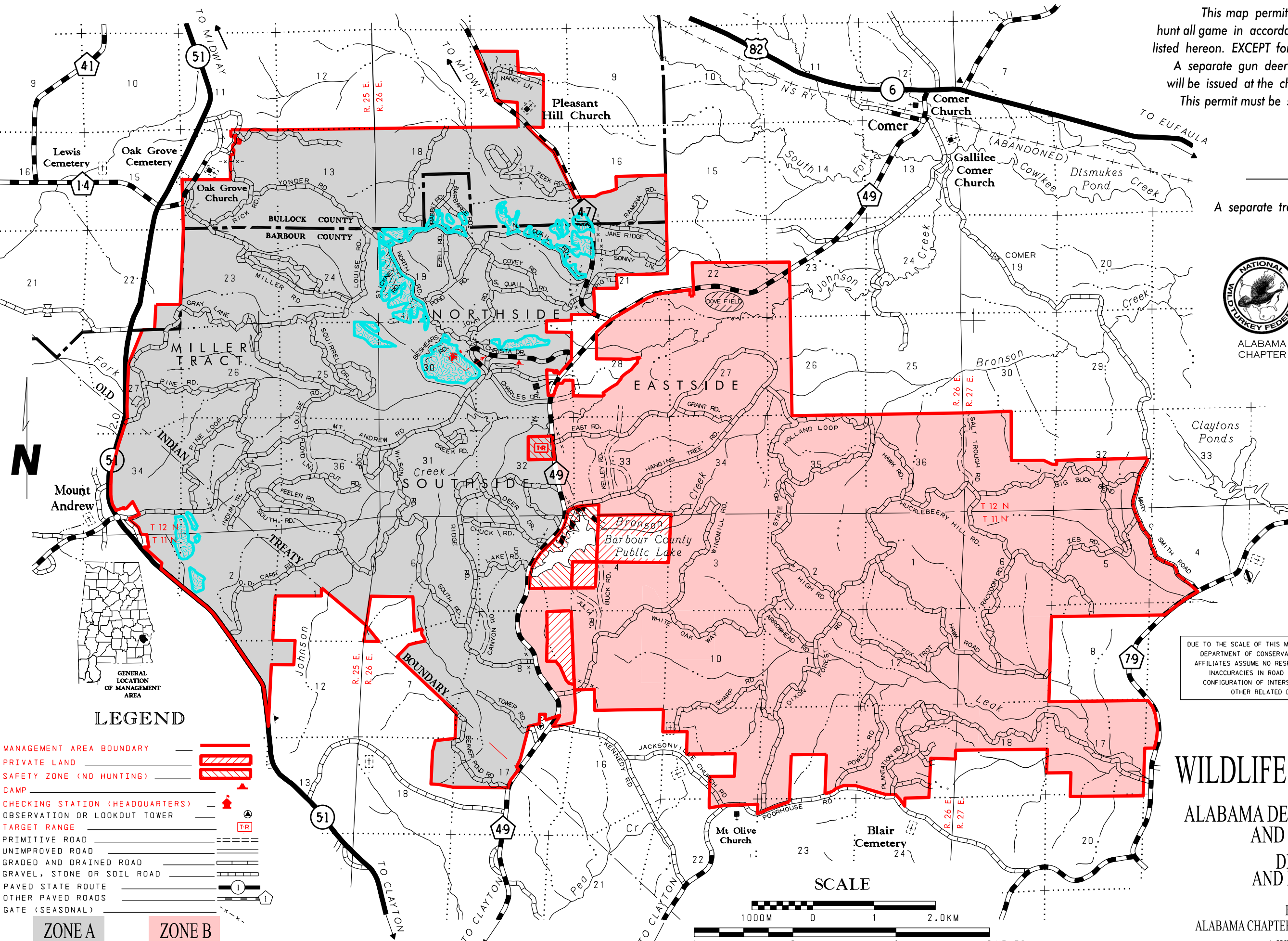
DUE TO THE SCALE OF THIS MAP THE ALABAMA DEPARTMENT OF CONSERVATION AND ITS AFFILIATES ASSUME NO RESPONSIBILITY FOR INACCURACIES IN ROAD ALIGNMENTS, CONFIGURATION OF INTERSECTIONS, AND OTHER RELATED DATA.

# BARBOUR WILDLIFE MANAGEMENT AREA

PREPARED BY THE  
ALABAMA DEPARTMENT OF CONSERVATION AND NATURAL RESOURCES

DIVISION OF WILDLIFE AND FRESHWATER FISHERIES

IN COOPERATION WITH THE  
FOREVER WILD LAND TRUST,  
ALABAMA CHAPTER OF THE NATIONAL WILD TURKEY FEDERATION  
A WILDLIFE RESTORATION PROJECT



### LEGEND

- MANAGEMENT AREA BOUNDARY (thick red line)
- PRIVATE LAND (hatched pattern)
- SAFETY ZONE (NO HUNTING) (dotted pattern)
- CAMP (red triangle)
- CHECKING STATION (HEADQUARTERS) (red arrow)
- OBSERVATION OR LOOKOUT TOWER (black circle with 'A')
- TARGET RANGE (TR symbol)
- PRIMITIVE ROAD (dashed line)
- UNIMPROVED ROAD (solid line)
- GRADED AND DRAINED ROAD (line with cross-ticks)
- GRAVEL, STONE OR SOIL ROAD (line with diagonal ticks)
- PAVED STATE ROUTE (line with '1' in a circle)
- OTHER PAVED ROADS (line with '1' in a diamond)
- GATE (SEASONAL) (line with '1' in a diamond)

**ZONE A**      **ZONE B**