

HOLLINS

WILDLIFE MANAGEMENT AREA

Burn Plan Map



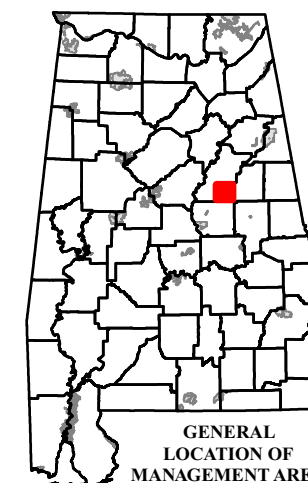
ZONE A **ZONE B**

Refer to USFS Motor Vehicle Use Map (MVUM) for roads open for public use.

Potential Prescribed Burn Units

When possible up-to-date burning information will be posted on our Facebook page.
 Follow us on Facebook at:
Alabama Wildlife & Freshwater Fisheries Division

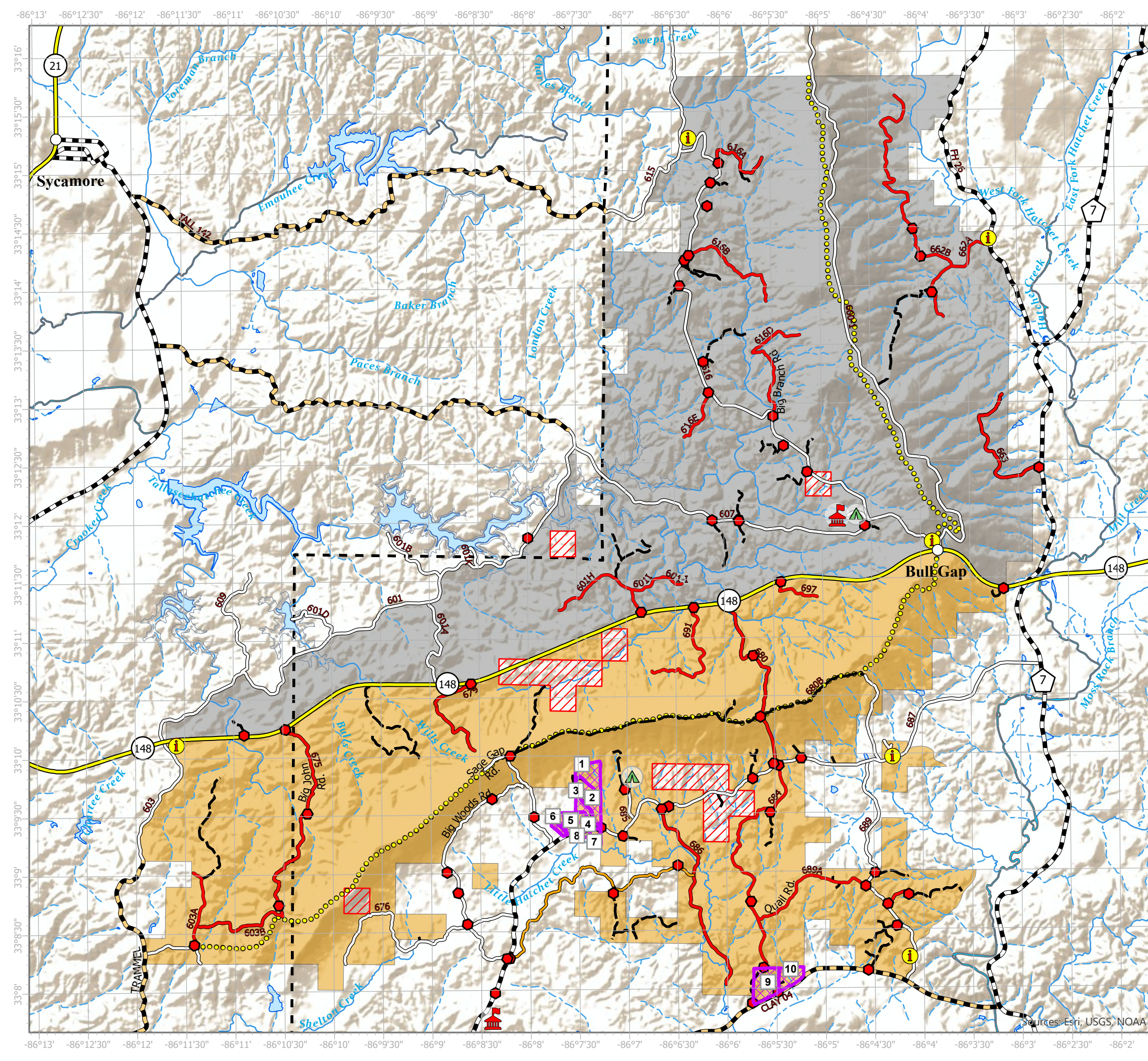
- Checking Station
- Camping Area
- Self Service Kiosk - DAILY PERMIT
- Pinhoti Trail
- Private Land
- Safety Zone
- Gate
- US Route Paved
- State Highway Paved
- County - Paved
- County - Gravel/Dirt
- WMA/USFS Road Yearlong OPEN
- WMA/USFS Road All Season OPEN
- WMA/USFS Road Seasonally CLOSED
- Woods Road - WALKING ONLY



THE DEPARTMENT OF CONSERVATION AND NATURAL RESOURCES DOES NOT DISCRIMINATE ON THE BASIS OF RACE, COLOR, RELIGION, AGE, SEX, NATIONAL ORIGIN, DISABILITY, PREGNANCY, GENETIC INFORMATION OR VETERAN STATUS IN ITS HIRING OR EMPLOYMENT PRACTICES NOR IN ADMISSION TO, ACCESS TO, OR OPERATIONS OF ITS PROGRAMS, SERVICES OR ACTIVITIES.

THIS IS NOT A SURVEY. BOUNDARIES REFLECT INFORMATION PROVIDED FOR HUNTING AT THE DATE OF REVISION. THE ALABAMA DEPARTMENT OF CONSERVATION DOES NOT ACCEPT RESPONSIBILITY FOR ANY INACCURACIES HEREON. THIS PUBLICATION IS AVAILABLE IN ALTERNATIVE FORMATS UPON REQUEST.

DUE TO THE SCALE OF THIS MAP THE ALABAMA DEPARTMENT OF CONSERVATION AND ITS AFFILIATES ASSUME NO RESPONSIBILITY FOR INACCURACIES IN ROAD ALIGNMENTS, CONFIGURATION OF INTERSECTIONS, AND OTHER RELATED DATA.



Sources: Esri, USGS, NOAA