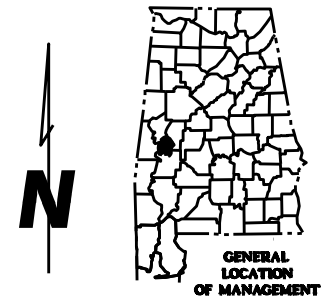
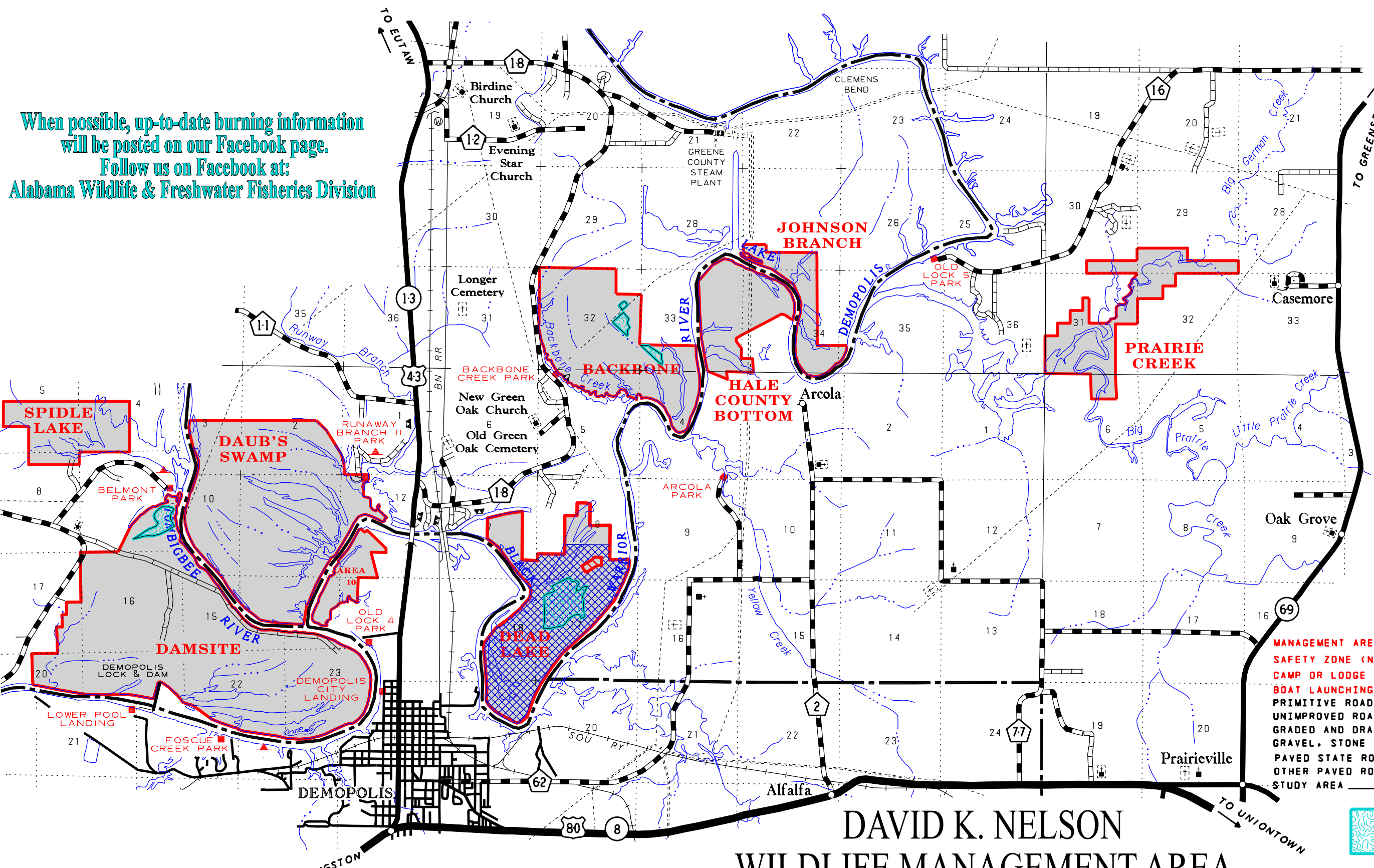


When possible, up-to-date burning information will be posted on our Facebook page. Follow us on Facebook at: Alabama Wildlife & Freshwater Fisheries Division



THIS IS NOT A SURVEY. BOUNDARIES REFLECT INFORMATION PROVIDED AT THE DATE OF REVISION. THE ALABAMA DEPARTMENT OF CONSERVATION CANNOT ACCEPT RESPONSIBILITY FOR INACCURACIES RESULTING FROM UNOBTAINABLE OR UNKNOWN DATA. THIS PUBLICATION IS AVAILABLE IN ALTERNATIVE FORMATS UPON REQUEST.

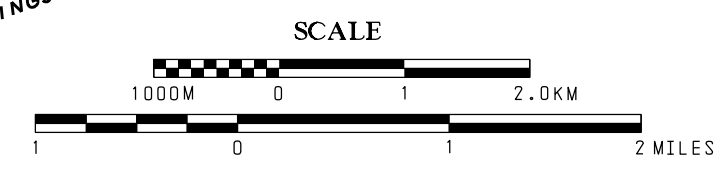
THE DEPARTMENT OF CONSERVATION AND NATURAL RESOURCES DOES NOT DISCRIMINATE ON THE BASIS OF RACE, COLOR, RELIGION, AGE, SEX, NATIONAL ORIGIN, DISABILITY, PREGNANCY, GENETIC INFORMATION OR VETERAN STATUS IN ITS HIRING OR EMPLOYMENT PRACTICES NOR IN ADMISSION TO, ACCESS TO, OR OPERATIONS OF ITS PROGRAMS, SERVICES OR ACTIVITIES.

DUE TO THE SCALE OF THIS MAP THE ALABAMA DEPARTMENT OF CONSERVATION AND ITS AFFILIATES ASSUME NO RESPONSIBILITY FOR INACCURACIES IN ROAD ALIGNMENTS, CONFIGURATION OF INTERSECTIONS, AND OTHER RELATED DATA.

LEGEND

- MANAGEMENT AREA BOUNDARY
- SAFETY ZONE (NO HUNTING)
- CAMP OR LODGE
- BOAT LAUNCHING RAMP
- PRIMITIVE ROAD
- UNIMPROVED ROAD
- GRADED AND DRAINED ROAD
- GRAVEL, STONE OR SOIL ROAD
- PAVED STATE ROUTE
- OTHER PAVED ROADS
- STUDY AREA

Potential Prescribed Burn Units



DAVID K. NELSON WILDLIFE MANAGEMENT AREA

ALABAMA DEPARTMENT OF CONSERVATION AND NATURAL RESOURCES
 DIVISION OF WILDLIFE AND FRESHWATER FISHERIES

