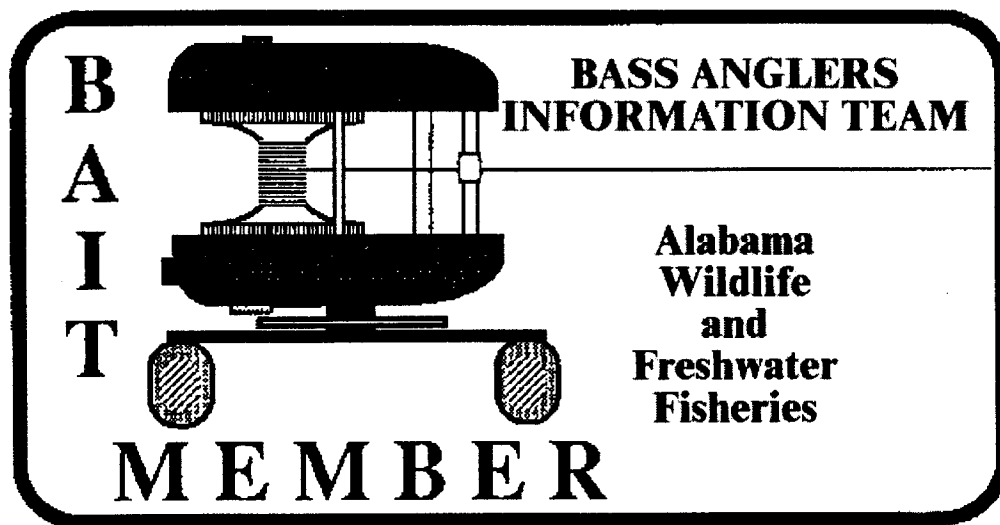


B.A.I.T.

**Bass Anglers Information Team
2000**



Department of Conservation and Natural Resources

Division of Wildlife and Freshwater Fisheries

Fisheries Section

64 North Union Street
Montgomery, Alabama 36130

**B.A.I.T.
Bass Anglers
Information Team
2000
Annual Report**

**by
William C. Nichols and James J. McHugh
Division of Wildlife and Freshwater Fisheries
Department of Conservation and Natural Resources**

*Funded in part by the Federal Aid to Sport fish Restoration Program
Alabama DJ/WB Project F-38*

INTRODUCTION

The printing of the 2000 B.A.I.T. annual report marks the fifteenth year of the B.A.I.T. program. The objective of the program since its inception has been to gather information on bass populations by combining the efforts of bass club members and state fisheries scientists. The B.A.I.T. program summarizes catch data already being collected by participating clubs on reservoir bass populations. These results are used by state fisheries scientists in combination with data from other sources as a basis for fisheries management decisions. Bass anglers use the report to establish future tournament sites or to locate a reservoir that provides a particular type of fishing action.

Through 2000, we have summarized 7,055 tournament reports. B.A.I.T. team anglers have spent 1,705,182 hours collecting data for this program. They have contributed data from 389,859 bass that weighed 655,227 pounds.

METHODS

Every year we attempt to maintain the support of the previous year's clubs and to enlist the support of new clubs through public meetings, news releases and letters. Participating club officers or tournament directors are sent the previous year's annual report, with tournament report postcards to be completed following each tournament. Clubs are assigned individual numbers to insure confidentiality. As tournament cards are received, they are checked for accuracy and entered into a computer database. Club officers are contacted when data are suspected to be erroneous. We compile and analyze the data following receipt of December tournament reports. Statewide tournament results are sorted by reservoir and by club.

To rank reservoirs, five "fishing quality" indicators were used: percent of successful anglers (percent of anglers with one or more bass at weigh-in), bass average weight, number of bass per angler-day, pounds of bass per angler-day, and hours required to catch a bass five pounds or larger. Since the length of a fishing day varies between

tournaments, an angler-day is defined as 10 hours of fishing effort. A minimum of five tournaments for an individual reservoir is considered necessary for minimum confidence in each reservoir dataset. Reservoirs with five or more tournament reports are ranked for each of the quality indicators. Values are assigned to each rank and an overall rank is determined for each reservoir by summing the values of the five quality indicators. This ranking system is intended to be a quick reference for club tournament site selection. It does not constitute a "best and worst" list of Alabama reservoirs and should not be interpreted that way.

RESULTS AND DISCUSSION

Bass clubs submitted 630 tournament reports during 2000, slightly less than last year's 638 reports. Club representatives did an excellent job filling out the cards and few reports were rejected due to incomplete or erroneous information. Fifty-three clubs or tournament organizations provided data in 2000. Two hundred and twenty-two reports from Alabama waters were received from Dr. Carl Quertermus of the University of West Georgia, who summarizes tournament data from the Georgia B.A.S.S. Federation and 40 reports from the Tennessee Wildlife Resource Agency that Tennessee clubs provided from Alabama reservoirs. Without their support, several Alabama reservoirs would not have been well represented in the quality indicator rankings (Table 2). Once again we must stress that reports from more locations increase the capability of the summaries to reflect actual fish population conditions and not just a good or poor day's fishing by one or two clubs.

In 2000, tournament reports were received for 32 bodies of water that were fished 130,805 hours. B.A.I.T. anglers caught 29,285 bass (12 inches and larger) that weighed 45,820.9 pounds (Table 1). A total of 191 bass five pounds and larger were reported for an overall catch rate of one bass 5 pounds or larger for every 685 hours of fishing. The number of bass over 8.0 pounds decreased from 17 in 1997 to 8 in 1998 and to 6 in both 1999 and 2000 (Table 5). The largest bass weighed 9.22 pounds and was caught in

Guntersville Reservoir. Guntersville Reservoir has again reported more bass (30) 5 pounds and larger than any other reservoir.

Statewide catch rates in 2000 for number and pounds of fish per angler-day slightly increased (Figure 1). The imposition of size limits in the 1990s explains some of the variability in angling success between the 1980s and 1990s. The 2000 catch of 2.24 fish per angler-day is an improvement over 2.05 fish per angler day in 1999. Ten lakes improved in overall fishing success, six lakes recorded declines and twelve lakes remained about the same (Appendix A).

Of the 53 clubs or tournament organizations that submitted data during 2000, 40 submitted five or more tournament reports. Sixteen clubs submitted 10 or more reports. Five contributors submitted one report as compared to one contributor last year. All club representatives should understand that every tournament report is important if this program is to continue to be successful. A list of clubs contributing tournament results for the 2000 B.A.I.T. report is presented in Table 4.

More tournament reports were received from Harding Reservoir (48) than from any other location. Pickwick (47) was second and Weiss and West Point (46) tied for third. Eufaula, Jordan, Guntersville, Lay, Logan Martin, Martin, Mobile Delta, Neely Henry and Wheeler each had 20 or more tournament reports (Table 1). As in 1999, a total of fourteen lakes were represented by 20 or more reports in 2000. A good distribution of reports provides more representative catch statistics from which meaningful summaries can be prepared.

Of the 32 reservoirs from which reports were received, 25 had five or more tournament reports (Table 1). The following comments deal with these 25 reservoirs which are ranked by quality indicators in Table 2. The percent of successful anglers (those with one or more fish) ranged from 52 at Coffeenville to 84 at Jones Bluff. The average weight of bass caught ranged from 1.07 pounds at Harris (13-16 inch slot limit) to 2.49 pounds at Eufaula (16-inch size limit, Table 1). Catch rates expressed as bass per angler-day ranged from 0.90 at Eufaula to 3.10 at Little Bear. Catch rates as pounds per

angler-day ranged from 1.94 at Wilson to 4.91 at Jordan. The statewide average weight for all 32 reservoirs was 1.56 pounds.

Overall, Mitchell reservoir accumulated more quality-indicator points (106) than any other reservoir in Alabama, replacing Jordan from last year. Jones Bluff (98) placed second and Jordan (96) came in third. Readers should note that the primary intent of Table 2 was not to determine the overall "best" reservoir, but to characterize the fishery of each reservoir. Anglers should first review the quality indicator that is most important to them. The overall rating would be used to narrow choices. For example, if an angler felt that angling success was the most important indicator, then Jones Bluff would be the first choice. However, Mitchell which is second has a better overall ranking and should provide high success combined with other higher ranked qualities.

Bass data as expressed in the B.A.I.T. report from reservoirs with harvest restrictions or length limits will be biased since the data is a function of the restrictions. Length limits are imposed to increase the number of fish below a minimum length or within a specified length range (slot limit) which should eventually result in a supply of bass above the limit. Because all minimum lengths and length ranges will be above the 12-inch limit fished in most tournaments, the restrictions will reduce the total harvest in numbers and possibly pounds. However, those fish weighed in will be larger (longer) by virtue of the minimum length or slot limit when the restriction has become fully functional within the bass community. In the B.A.I.T. report, length limit lakes should rank high for average weight and near the bottom for percent success and bass per angler-day. For instance, bass per angler-day averaged 2.24 statewide but Wilson and Eufaula were low with 0.90 each. Statewide average weight in 2000 was 1.56 pounds for all 32 reservoirs but at Wilson, Guntersville, and Eufaula average weight was over 2.0 pounds. These average weights were higher only because the fish weighed in are larger due to the imposed length limits.

Length limits remained in effect during 2000 on Eufaula and West Point (16-inch minimum on largemouth bass), Wilson and Guntersville (15-inch minimum on black

bass), Demopolis (14-inch minimum on black bass), Pickwick (14-inch minimum on smallmouth bass), and Harris and Smith (13 to 16-inch slot on black bass). Quality indicators from Demopolis show a slight increase over 1999 data but Wilson's bass harvest indicated that the minimum length limits at this time have not resulted in a significant positive trend. Additional sampling and more B.A.I.T. information will be needed to determine if the length limits at these reservoirs will be effective. Guntersville does appear to be reflecting a positive response since 1998 in the bass population from implementation of a length limit but there was not a significant trend upwards between the 1999 and 2000 data. Fishing as measured by the quality indicators at West Point during 2000 had a slight improvement since 1999 in terms of bass/angler and pounds/angler but average weight was slightly lower. Eufaula has continued to show no significant change since 1998 and standardized sampling has indicated that there has been an increase in the number of all sizes of bass but that they are in poorer condition and are exhibiting slower growth. Georgia and Alabama biologists have discussed various management options and it was determined that the length limit should be reduced to 14 inches to allow increased bass harvest. This change in length limit took effect in November of 2000. Lewis Smith's bass population has improved from 1999 but since 1996 it's performance has been erratic so this improvement may not yet indicate a trend. It is very important that anglers continue to harvest largemouth and spotted bass under 13 inches from Smith and Harris Lakes. Efforts to remove bass under 13 inches at Harris Reservoir are not progressing very quickly but the 2000 data indicates an improvement in quality factors over 1999. Harris anglers are beginning to make an impact on the bass population but quality indicators remain relatively low in pounds per angler-day and average weight per angler-day. These indicators should improve as the slot limit takes full effect. Pickwick Reservoir's smallmouth bass fishing is among the best in the nation.

A disturbing fact has been discovered through analysis of the B.A.I.T. data. Since 1997 there has been a large decrease in catch of bass over five pounds from reservoirs throughout the State. The average number of hours to catch a five-pound or larger bass has changed from 265 in 1996 and 291 in 1997 to 594 in 1998 and 837 in 1999. In 2000

this amount of effort decreased to 685 hours but this is still much higher than 1997 and it may still be too early to consider this trend reversed. This decrease in large fish is occurring regardless of the river system, reservoir size, reservoir location, or type of management. A similar trend has been seen in Tennessee and Georgia. Therefore, this phenomenon is at least regional in scope. What has happened to cause such a response from bass populations is unknown at this time. All fish populations cycle to some degree. Most reservoirs have good bass spawning every year. The strength of a year-class of bass is determined not by the spawn but by the condition or state of health of bass as winter approaches. Bass fingerlings in poor condition or with low body fat experience high mortality and many do not survive their first winter. This dynamic process drives bass cycles up and down and directly affects the number of quality size bass available in four to five years. Our sampling data does not indicate a statewide failure of bass year-classes in the nineties. Also, B.A.I.T. data does not show that a problem has occurred with bass younger than age 3. This is indicated by the high rate (73.9%) of angling success in 2000, as there has been every year. So we can eliminate early recruitment years as the problem. This would mean that the problem or mortality is occurring at a later time such as at three or four pounds. Mortality is divided into angling and natural components. To suggest that harvest or delayed angling mortality has for some reason increased greatly in the last two years does not seem to make sense. We do know that angling pressure is increasing so angling mortality can not be completely dismissed at this time. Could it be natural mortality? Natural mortality can be attributed to predation, old age, parasites, diseases, pollution and environmental conditions. The only new problem that has been identified regionally in the last few years is the largemouth bass virus (LMBV). Not much is known about this virus, however, it has been found in bass populations throughout the southeast and has been attributed to bass kills in Alabama, Mississippi, Georgia, South Carolina, Texas and Louisiana. Adult bass two pounds and larger seem to be the most susceptible. Regardless of the cause, the trend is disturbing and we are continuing to conduct research to determine if LMBV, or some other factor, is the cause for the reduction in catch of larger bass. We are presently working with researchers at Auburn University and the U.S. Fish and Wildlife Service, Warm Springs Fish Health Center, to assess the presence of

this virus in Alabama bass populations. Please report any unusual bass die-offs to your district fisheries office.

Graphs in Appendix A provide you with a historical record of how your favorite waters have performed in the B.A.I.T. program since 1986. A few words of caution, these graphs are not restricted to bodies of water with five or more tournaments. Data points for some years may be represented by only one tournament or are completely absent in some cases. However, those situations are restricted to those water bodies that generally have not been included in the quality indicator rankings in Table 2. Secondly, when comparing water bodies, be aware that the scale on the vertical axes have maximum ranges that vary. You can use these graphs to predict 2001 fishing by looking for trends. Good luck in 2001 and don't forget to take a kid fishing. They are our future anglers and stewards of Alabama's resources.

This report is available on Alabama's Division of Wildlife and Freshwater Fisheries Internet Homepage: www.dcnr.state.al.us/agfd. Visit us for resource information and to send email.

Table 1. Statewide summary of tournaments for bass clubs participating in the 2000 B.A.I.T. Program.

Reservoir	Tourn. Number		Bass Anglers		Bass Success		Bass Number		Bass Weight		Bass > 5LB		Total Hours		Percent Success		Average Weight		Bass per Angler-day		Pounds per Angler-day		Hours per Bass > 5LB	
Aliceville	4	160	130	299	520.4	5	1557	81.25	1.74	1.92	3.34	311												
Bankhead	1	34	30	86	143.7	1	340	88.24	1.67	2.53	4.23	340												
Bear Creek	2	35	21	41	59.9	1	280	60.00	1.46	1.46	2.14	280												
Cedar Creek	3	58	46	131	176.3	1	518	79.31	1.35	2.53	3.41	518												
Coffeeville	8	261	136	453	650.7	3	2391	52.11	1.44	1.90	2.72	797												
Demopolis	7	181	119	303	564.9	0	1911	65.75	1.86	1.59	2.96	324												
Eufaula	33	645	305	552	1377.0	19	6154	47.29	2.49	0.90	2.24	324												
Gainesville	10	177	108	368	706.9	9	1753	61.02	1.92	2.10	4.03	195												
Guntersville	43	1087	757	1531	3418.7	30	10248	69.64	2.23	1.49	3.34	342												
Harding	48	755	570	1438	1931.7	7	6676	75.50	1.34	2.15	2.89	954												
Harris	19	336	246	789	845.1	2	3073	73.21	1.07	2.57	2.75	1536												
Holt	3	85	71	219	290.5	0	752	83.53	1.33	2.91	3.86	245												
Jones Bluff	10	158	134	389	604.0	6	1472	84.81	1.55	2.64	4.10	245												
Jordan	20	416	336	1053	1970.1	5	4012	80.77	1.87	2.62	4.91	802												
Lay	27	497	397	1427	2178.3	6	5075	79.88	1.53	2.81	4.29	846												
Little Bear	6	133	96	350	402.3	1	1130	72.18	1.15	3.10	3.56	1130												
Logan Martin	45	1209	974	3347	4978.1	7	11999	80.56	1.49	2.79	4.15	1714												
Martin	36	1066	857	2824	3711.7	5	10172	80.39	1.31	2.78	3.65	2034												
Millers Ferry	16	349	288	906	1451.5	2	3663	82.52	1.60	2.47	3.96	1832												
Mitchell	17	407	339	1100	1801.8	7	3906	83.29	1.64	2.82	4.61	558												
Mobile Delta	39	686	537	1459	2245.1	3	6549	78.28	1.54	2.23	3.43	2183												
Neely Henry	27	472	322	895	1426.1	7	4357	68.22	1.59	2.05	3.27	622												
Pickwick	47	1493	1146	2662	4402.3	19	13842	76.76	1.65	1.92	3.18	729												
Smith	5	69	52	146	167.1	1	585	75.36	1.14	2.50	2.86	585												
Tuscaloosa	7	571	401	1341	1845.0	3	4996	70.23	1.38	2.68	3.69	1665												
Upper Bear	4	69	44	93	162.4	2	612	63.77	1.75	1.52	2.65	306												
Warrior	7	181	128	409	750.9	9	1622	70.72	1.84	2.52	4.63	180												
Weiss	46	773	618	1852	2769.2	10	7411	79.95	1.50	2.50	3.74	741												
West Point	46	664	405	918	1446.2	12	5995	60.99	1.58	1.53	2.41	500												
Wheeler	32	618	508	1735	2482.7	5	6022	82.20	1.43	2.88	4.12	1204												
Wilson	11	177	95	142	304.6	2	1571	53.67	2.15	0.90	1.94	785												
Yates	1	21	14	27	35.8	1	168	66.67	1.33	1.61	2.13	168												
Grand Total	630	13843	10230	29285	45820.9	191	130805	73.90	1.56	2.24	3.50	685												

Table 2. Ranking by quality indicators for all reservoirs with five or more tournament reports in the 2000 B.A.I.T. program.

Rank	Percent Success		Average Weight		Bass per Angler-day		Pounds per Angler-day		Hours per Bass > 5LB		Overall	Value
	Success	Weight	Angler-day	Angler-day	Angler-day	Angler-day	Hours per Bass > 5LB	Hours per Bass > 5LB				
1	Jones Bluff	Eufaula	Little Bear	Jordan	Warrior	Warrior	Mitchell	106				
2	Mitchell	Guntersville	Wheeler	Warrior	Gainesville	Gainesville	Jones Bluff	98				
3	Millers Ferry	Wilson	Mitchell	Mitchell	Jones Bluff	Jones Bluff	Jordan	96				
4	Wheeler	Gainesville	Lay	Lay	Eufaula	Eufaula	Warrior	83				
5	Jordan	Jordan	Logan Martin	Logan Martin	Guntersville	Guntersville	Lay	83				
6	Logan Martin	Demopolis	Martin	Wheeler	West Point	West Point	Wheeler	81				
7	Martin	Warrior	Tuscaloosa	Jones Bluff	Mitchell	Mitchell	Gainesville	78				
8	Weiss	Pickwick	Jones Bluff	Gainesville	Smith	Logan Martin	Logan Martin	76				
9	Lay	Mitchell	Jordan	Millers Ferry	Neely Henry	Weiss	Weiss	73				
10	Mobile Delta	Millers Ferry	Harris	Weiss	Pickwick	Millers Ferry	Millers Ferry	72				
11	Pickwick	Neely Henry	Warrior	Tuscaloosa	Weiss	Guntersville	Guntersville	67				
12	Harding	West Point	Weiss	Martin	Wilson	Pickwick	Pickwick	65				
13	Smith	Jones Bluff	Smith	Little Bear	Coffeerville	Little Bear	Little Bear	61				
14	Harris	Mobile Delta	Millers Ferry	Mobile Delta	Jordan	Martin	Martin	60				
15	Little Bear	Lay	Mobile Delta	Guntersville	Lay	Neely Henry	Neely Henry	57				
16	Warrior	Weiss	Harding	Neely Henry	Harding	Tuscaloosa	Tuscaloosa	55				
17	Tuscaloosa	Logan Martin	Gainesville	Pickwick	Little Bear	Mobile Delta	Mobile Delta	53				
18	Guntersville	Coffeerville	Neely Henry	Demopolis	Wheeler	Wheeler	Smith	52				
19	Neely Henry	Wheeler	Pickwick	Harding	Harris	Harris	Eufaula	51				
20	Demopolis	Tuscaloosa	Coffeerville	Smith	Tuscaloosa	Tuscaloosa	Harding	46				
21	Gainesville	Harding	Demopolis	Harris	Logan Martin	Logan Martin	West Point	45				
22	West Point	Martin	West Point	Coffeerville	Millers Ferry	Millers Ferry	Wilson	43				
23	Wilson	Little Bear	Guntersville	West Point	Martin	Martin	Harris	41				
24	Coffeerville	Smith	Wilson	Eufaula	Mobile Delta	Mobile Delta	Demopolis	40				
25	Eufaula	Harris	Eufaula	Wilson	Demopolis	Demopolis	Coffeerville	33				

Table 3. Tournament summary for all bass clubs participating in the 2000 B.A.I.T. program.

Club Number	Tourn. Number	Bass Anglers		Bass Success		Bass Number		Bass Weight		Bass >5LB		Total Hours	Percent Success	Average Weight		Bass per Angler-day		Pounds per Angler-day		Hours per Bass >5LB
		Anglers	Success	Number	Success	Weight	Number	Hours	Weight	Success	Weight			Success	Weight	Success	Weight	Success	Weight	
1	7	109	78	249	78	404.1	0	1075	71.56	1.62	2.32	3.76	1815	87.57	1.14	3.48	3.96	1815		
2	7	177	155	632	155	718.2	1	1815	87.57	1.14	3.48	3.96	1815	87.57	1.14	3.48	3.96	1815		
3	8	101	62	197	62	333.3	4	872	61.39	1.69	2.26	3.82	218	61.39	1.69	2.26	3.82	218		
4	9	276	208	596	208	954.1	5	2766	75.36	1.60	2.16	3.45	553	75.36	1.60	2.16	3.45	553		
5	6	70	49	121	49	168.9	0	618	70.00	1.40	1.96	2.73	1348	70.00	1.40	1.96	2.73	1348		
6	11	262	218	755	218	1164.8	2	2695	83.21	1.54	2.80	4.32	1095	83.21	1.54	2.80	4.32	1095		
7	12	125	95	266	95	390.0	1	1095	76.00	1.47	2.43	3.56	465	76.00	1.47	2.43	3.56	465		
8	8	104	76	211	76	382.1	2	930	73.08	1.81	2.27	4.11	1140	73.08	1.81	2.27	4.11	1140		
9	4	49	40	114	40	203.8	0	441	81.63	1.79	2.59	4.62	1009	81.63	1.79	2.59	4.62	1009		
10	8	116	104	330	104	535.3	1	1140	89.66	1.62	2.90	4.70	442	89.66	1.62	2.90	4.70	442		
11	9	216	184	568	184	759.1	2	2017	85.19	1.34	2.82	3.76	1140	85.19	1.34	2.82	3.76	1140		
12	12	294	203	460	203	854.3	6	2652	69.05	1.86	1.73	3.22	442	69.05	1.86	1.73	3.22	442		
13	13	141	97	239	97	385.1	0	1168	68.79	1.61	2.05	3.30	618	68.79	1.61	2.05	3.30	618		
14	9	156	121	274	121	444.6	2	1236	77.56	1.62	2.22	3.60	288	77.56	1.62	2.22	3.60	288		
15	6	122	103	298	103	451.8	4	1154	84.43	1.52	2.58	3.92	1998	84.43	1.52	2.58	3.92	1998		
16	5	82	75	207	75	319.8	0	786	91.46	1.54	2.63	4.07	891	91.46	1.54	2.63	4.07	891		
17	7	217	95	311	95	573.8	1	1998	43.78	1.84	1.56	2.87	769	43.78	1.84	1.56	2.87	769		
18	11	216	145	359	145	582.1	2	1782	67.13	1.62	2.01	3.27	2397	67.13	1.62	2.01	3.27	2397		
19	8	211	170	518	170	827.4	3	2306	80.57	1.60	2.25	3.59	570	80.57	1.60	2.25	3.59	570		
20	9	261	132	424	132	651.5	1	2397	50.57	1.54	1.77	2.72	2919	50.57	1.54	1.77	2.72	2919		
21	6	202	84	355	84	639.8	3	1709	41.58	1.80	2.08	3.74	455	41.58	1.80	2.08	3.74	455		
22	5	1332	952	2830	952	4223.7	4	11676	71.47	1.49	2.42	3.62	115	71.47	1.49	2.42	3.62	115		
23	11	233	195	674	195	1079.9	5	2277	83.69	1.60	2.96	4.74	261	83.69	1.60	2.96	4.74	261		
24	4	73	63	228	63	516.5	9	1033	86.30	2.27	2.21	5.00	382	86.30	2.27	2.21	5.00	382		
25	3	66	59	228	59	378.4	3	783	89.39	1.66	2.91	4.83	859	89.39	1.66	2.91	4.83	859		
26	11	261	197	627	197	1108.1	7	2674	75.48	1.77	2.34	4.14	561	75.48	1.77	2.34	4.14	561		
27	7	101	81	173	81	399.8	1	859	80.20	2.31	2.01	4.65	699	80.20	2.31	2.01	4.65	699		
28	3	53	44	131	44	225.3	0	485	83.02	1.72	2.70	4.65	1460	83.02	1.72	2.70	4.65	1460		
29	14	289	201	637	201	901.0	5	2806	69.55	1.41	2.27	3.21	699	69.55	1.41	2.27	3.21	699		
30	1	36	18	86	18	164.9	0	324	50.00	1.92	2.65	5.09	1460	50.00	1.92	2.65	5.09	1460		
31	13	151	104	326	104	518.7	2	1398	68.87	1.59	2.33	3.71	699	68.87	1.59	2.33	3.71	699		
32	7	167	138	285	138	463.0	1	1460	82.63	1.62	1.95	3.17	1460	82.63	1.62	1.95	3.17	1460		

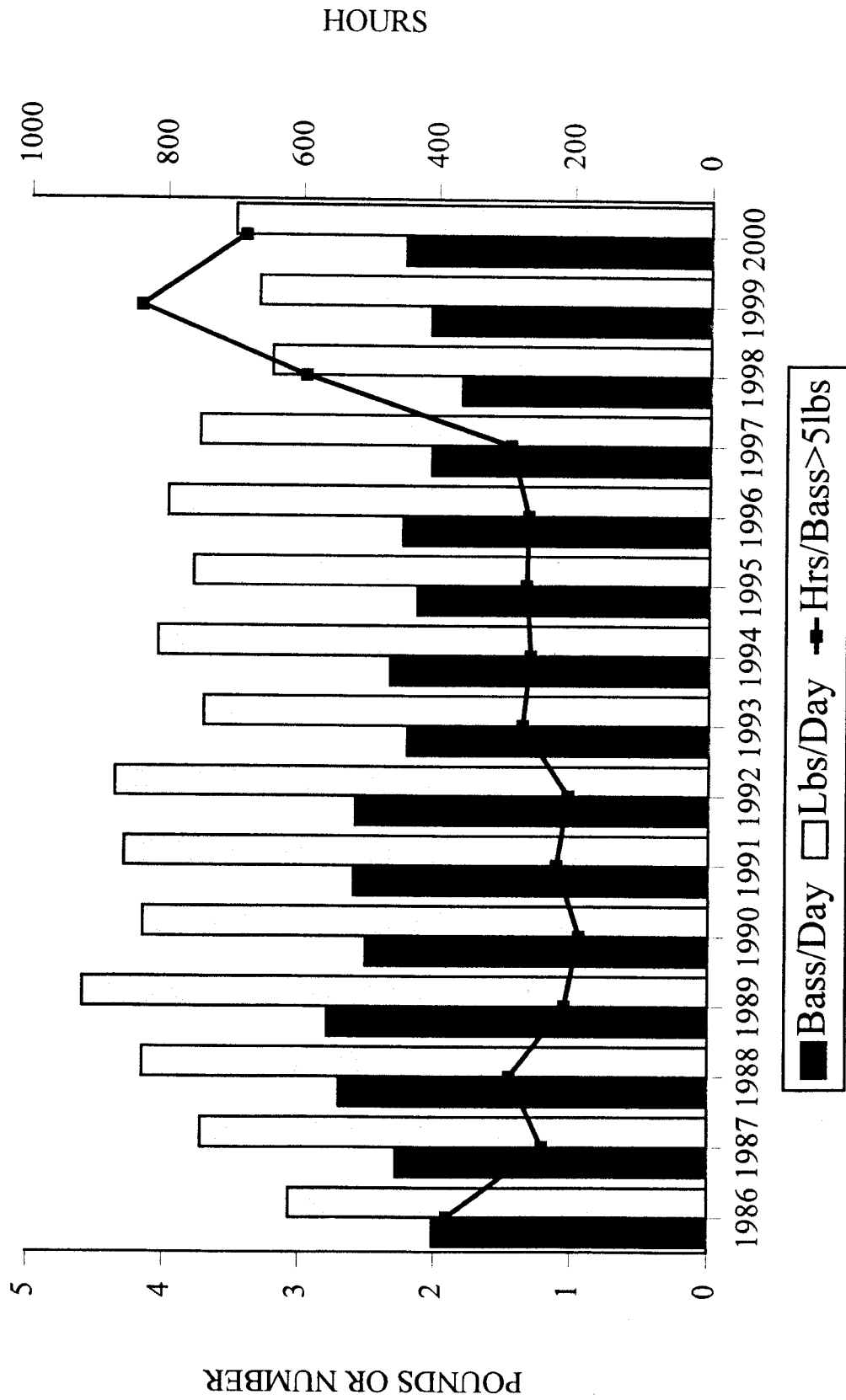
Table 4. Clubs supporting the 2000 B.A.I.T. annual report.

CLUB NAME	ADDRESS	CITY	STATE	ZIP	CLUB REP	PHONE
877TH BASSMASTERS	P.O. BOX 1961	HAMILTON	AL	35570	JEFF WHITE	295-921-5636
ALABAMA BASS FEDERATION	P.O. BOX 190	NOTASULGA	AL	36866	AL REDDING	334-237-1177
ALABAMA BASS ANGLERS	1636 CHILDHAVEN RD	CULLMAN	AL	35055	JOHN McCONNELL	256-736-9108
ALABAMA ELECTRIC COOP	P.O. BOX 10	LEROY	AL	36548	RANDY GRIMES	334-246-0612
ALEXANDER CITY BASSMASTERS	311 LAKEVIEW CIR	ALEXANDER CITY	AL	35010	HULAN MATTOX	256-234-5231
BALDWIN COUNTY BASSMASTERS	13411 COUNTY ROAD 3	FAIRHOPE	AL	36532	LARRY YOUNG	334-928-1052
BAMA BASSMASTERS	16150 BEAMS ROAD	NORTHPORT	AL	35475	WALTER KARR	205-339-5727
BIRMINGHAM BASS CLUB INC	12110 WISHING WELL LANE	MCCALLA	AL	35111	DAVID JOHNSTON	205-819-8611
BIRMINGHAM BASSMASTERS	5391 HARVEST RIDGE LANE	BIRMINGHAM	AL	35242	JIM HARRINGTON	205-991-3857
BLACK WARRIOR BASS TRACKERS	5514 SUMMERFIELD DR E	TUSCALOOSA	AL	35404	CHARLIE TIDMORE	205-553-2919
BLACKWATER BASS CASTERS	322 S. MAGNOLIA	LAUREL	MS	39440	VERNON McCREE	601-425-4852
BOEING BASS CLUB	26555 LAMBERT ROAD	ELKMONT	AL	36520	JONATHAN MANTUEFFEL	256-423-8674
BREWTON BASSMASTERS	P.O. BOX 2222	EAST BREWTON	AL	36427	ALLEN COUCH	334-867-9852
CHICKASABOGUE BASSMASTERS	734 MARGIANA DR	SATSUMA	AL	36572	JAKE BUSH	314-675-9422
CHRISTIAN BASSMEN OF MONTGOMERY	4950 GOVERNMENT BLVD # 44	MOBILE	AL	36693	JIMMY GLENN	334-665-1260
CLAY COUNTY BASS BUSTERS	62 COUNTY ROAD 8021	LINEVILLE	AL	36266	BRIAN BUTLER	256-396-6100
CONFEDERATE BASS	426 CHAPEWOOD DR	DOTHAN	AL	36792	LARRY SKEEN	334-793-4683
DEMOPOLIS KIWANIS CLUB	1080 VILLA RD	GALLIEN	AL	35747	JOHNNY BROOKER	334-289-2391
DIXIELAND BASSMASTERS	3669 SIMPSON PT RD	GRANT	AL	35456	DANNY WILDER	256-728-4922
DUNCANVILLE BASS CLUB	P.O. BOX 122	DUNCANVILLE	AL	35907	KIRK GARNER	205-758-6067
ETOWAH ANGLERS BASS CLUB	2276 BURNS STREET	SOUTHSHORE	AL	35555	ALBERT DAVIS	256-442-7446
FAYETTE	250 25TH STREET N E	FAYETTE	AL	35226	DANNY BLACKBURN	205-932-3342
FIVE FLAGS BASS CLUB	5680 MULDOON RD	PENSACOLA	FL	32526	WILLIAM MYRICK	850-456-6860
GEVEVA COUNTY BASSMASTERS	532 COUNTY ROAD 266	ENTERPRISE	AL	36330	MIKE McDANIEL	334-894-6109
GEORGIA BASS FEDERATION					DR. CARL QUERTERMUS	
GILBERTOWN BASS CLUB	P.O. BOX 183	GILBERTOWN	AL	36988	MIKE THORN	334-843-2668
HAMILTON BASSMASTERS	727 DEER FIELD TR	HAMILTON	AL	35570	JIMMY MILLS	205-921-7764
HAWG MASTERS	P.O. BOX 174	HOLLY POND	AL	35083	RUCKEY MONTGOMERY	256-796-7811
HOME BUILDERS ASSOC	404 20th AVE	TUSCALOOSA	AL	35401	GENE GRIFFIN	205-345-7253
JACKSONVILLE BASSMASTERS	P.O. BOX 7652	OXFORD	AL	36203	JERRY TODD	256-835-1876
JASPER BASS CLUB	132 LAY RD	JASPER	AL	35503	GREG RICE	205-384-4730
KOWALIGA	26 RICHARD ST	TALLASSEE	AL	36078	HANK GOLDEN	334-383-7201
LAKE GUNTERSVILLE BASSMASTERS	2210 LANCELOT DR. SW	DECATUR	AL	35603	PHIL EKEMA	256-580-3090
LAY LAKE BASSMASTERS	243 ROCKY ROAD	SYLACAUGA	AL	35151	RUBEN ABERNATHY	256-245-0026
LIMESTONE LINKERS	21889 DAVID DR	ELKMONT	AL	36520	GERALD RICKRODE JR	256-231-8943
LOWER ALABAMA HOOKSETTERS	8285 COTTAGE HILL RD	MOBILE	AL	36695	JAMES D. MILLS	334-633-6228
MASTERS BASS	6216 BRANDY RUN ROAD NORTH	MOBILE	AL	36608	CHIPPER MATHIS	334-666-2820
NAHEOLA BASSMASTERS	37 WHITE OAK DR	THOMASVILLE	AL	36784	JAMES MORGAN	314-636-5322
NORTH ALABAMA BASS CLUB	4201 CLOVERDALE DR	HUNTSVILLE	AL	35805	HUBERT PRESTRIDGE	256-837-4812
OUTCASTERS	3002 HILLCREST DR	SCOTTSBORO	AL	35769	DEON SMITH	256-259-0530
PENCO BASS CLUB	9 MONTE BELLO LANE	MONTEVALLO	AL	35115	JOHN SIPPOLA	205-663-8994
PHILADELPHIA BASS CLUB	603 COLUMBUS AVE	PHILADELPHIA	MS	39350	MORRIS JOHNSON	601-663-4201
PICKENS COUNTY BASSMASTERS	304 FALCON RD	REFORM	AL	35481	MIKE OWENS	205-375-2182
PIPEMILL BASSMASTERS	350 SPRING TRAIL	WARRIOR	AL	35180	BILLY J. LAWSON	205-647-2871
PLEASANT VALLEY BASS CHASERS	141 ILAMO CIRCLE	PELL CITY	AL	35128	JIMMY MORSE	205-884-1236
RED BIRD BASS CLUB	P.O. BOX 9233	MONTGOMERY	AL	36108	ROY LEWIS JR	334-263-0099
ROANOKE BASS HUNTERS	91 CO RD 6911	ROANOKE	AL	36274	DAVID A. BROWN	256-357-2669
SYLACAUGA BASS ANGLERS	ROUTE 3 BOX 63 D	GOODWATER	AL	35972	SCOTT HORN	256-377-4306
TENNESSEE RIVER BASS CLUB	P.O. BOX 255	CHEROKEE	AL	35616	RICHARD PHILLIPS	256-370-7210
TENNESSEE VALLEY HAWG HUNTERS	2825 MONTROSE DR. SOUTHWEST	DECATUR	AL	35603	JOHN SIVLEY	256-350-9193
TENNESSEE WILDLIFE RESOURCES AGENCY					WILLIAM C REEVES	
TIGER BASSMASTERS	420 PLANTERS ROAD	MONTGOMERY	AL	36109	BILL GORDON	334-279-4936
WEISS LAKE BASSMASTERS	29 RIDGEFIELD DR S.E.	SILVER CREEK	GA	30173	BEN EARLY	706-235-0682

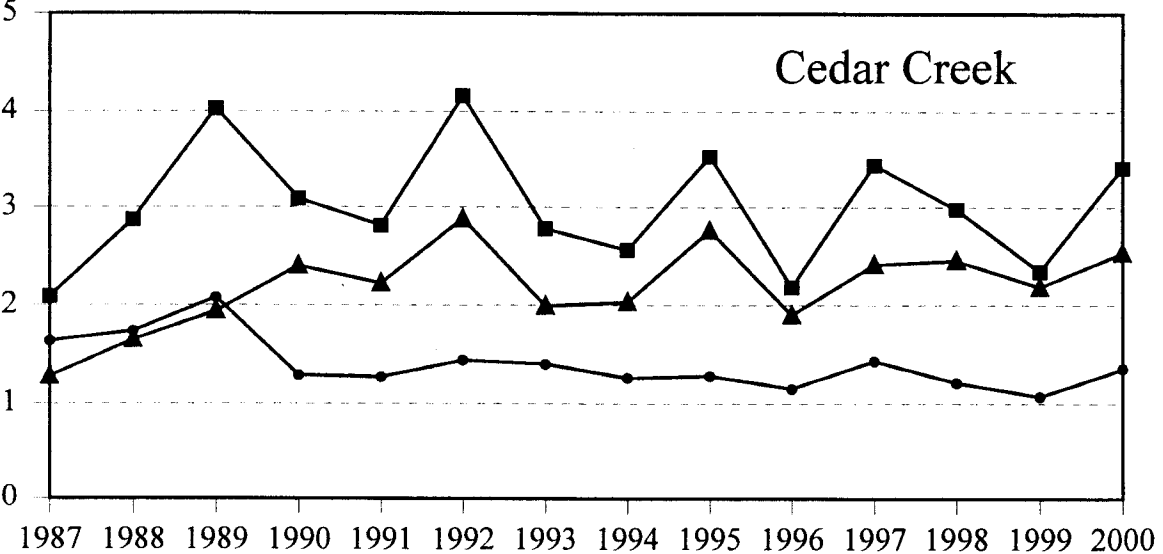
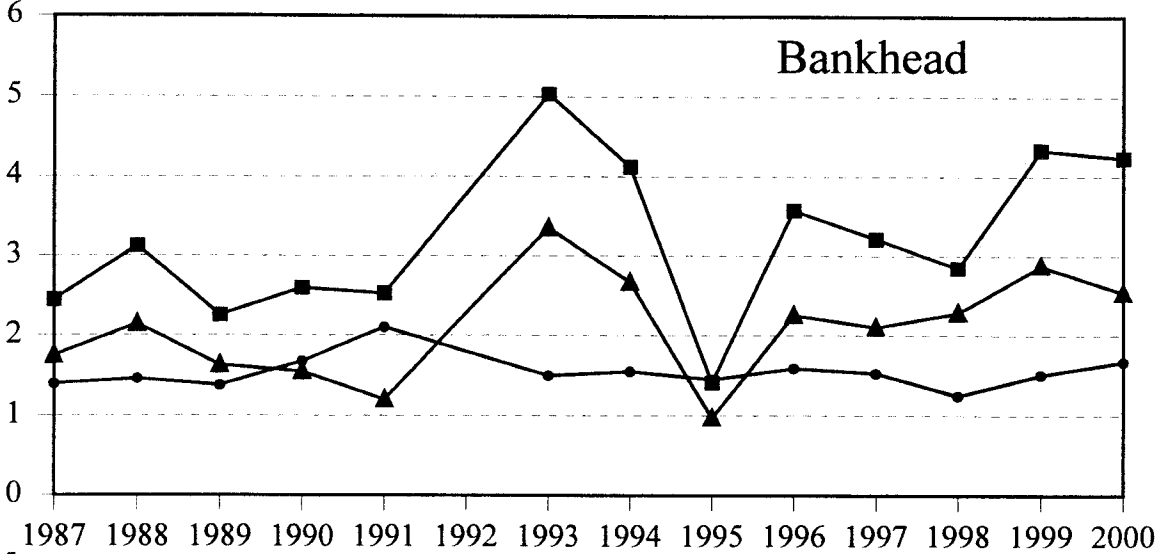
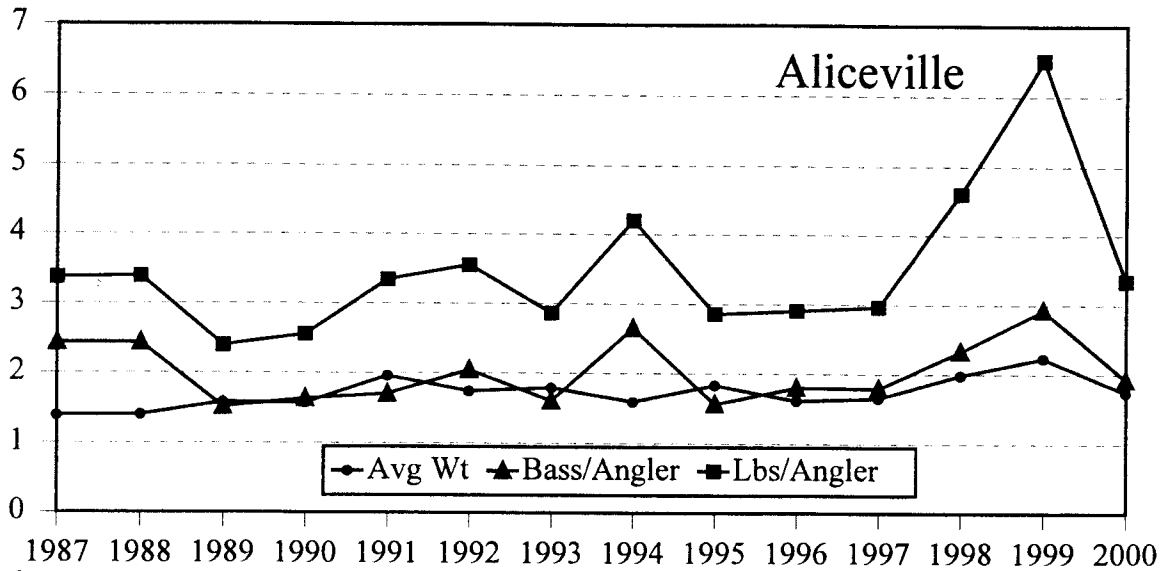
Table 5. Bass eight pounds and larger from 2000 B.A.I.T. tournament reports.

WEIGHT(LBS)	DATE	LOCATION	CLUB
9.22	20-May	Guntersville	Tennessee Wildlife Resources
9.13	19-Feb	Upper Bear	Hamilton Bassmasters
9.00	10-Jun	Eufaula	Georgia Bass Federation
8.69	4-Mar	Guntersville	Outcasters
8.31	19-Mar	Eufaula	Georgia Bass Federation
8.00	25-Mar	Upper Bear	877th Bassmasters

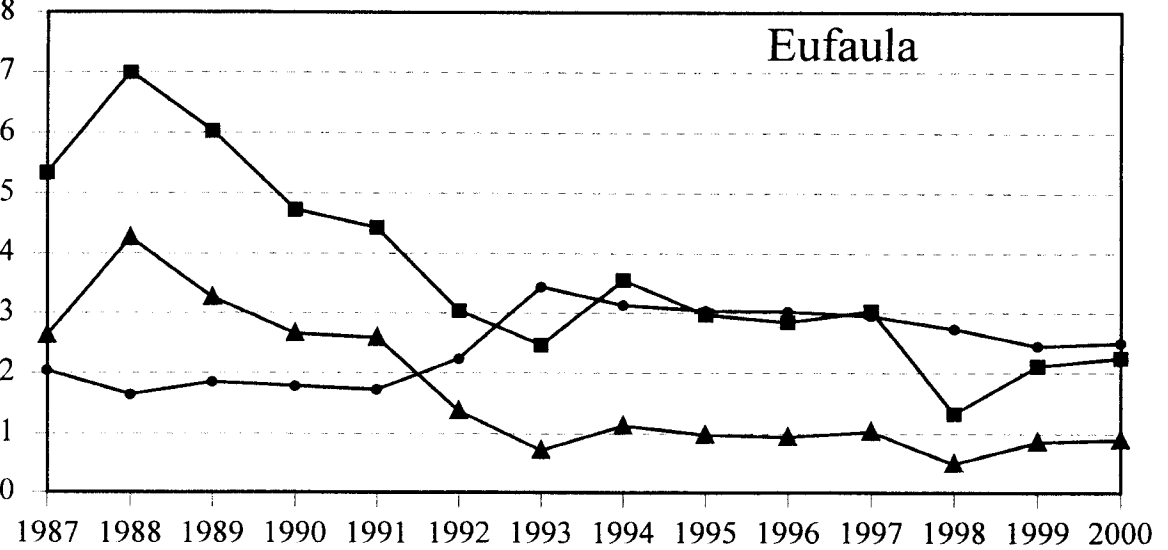
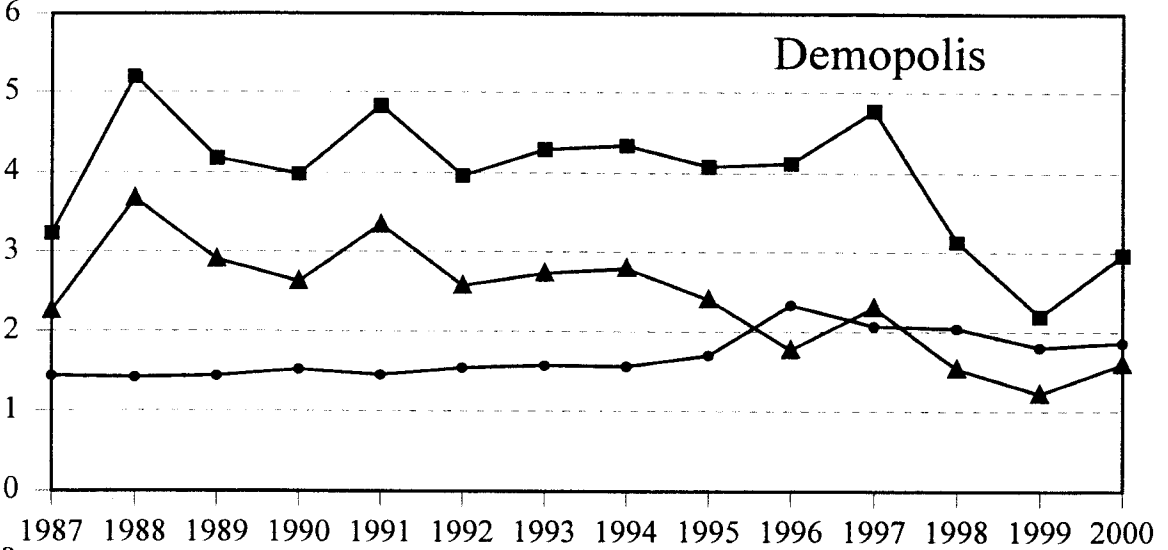
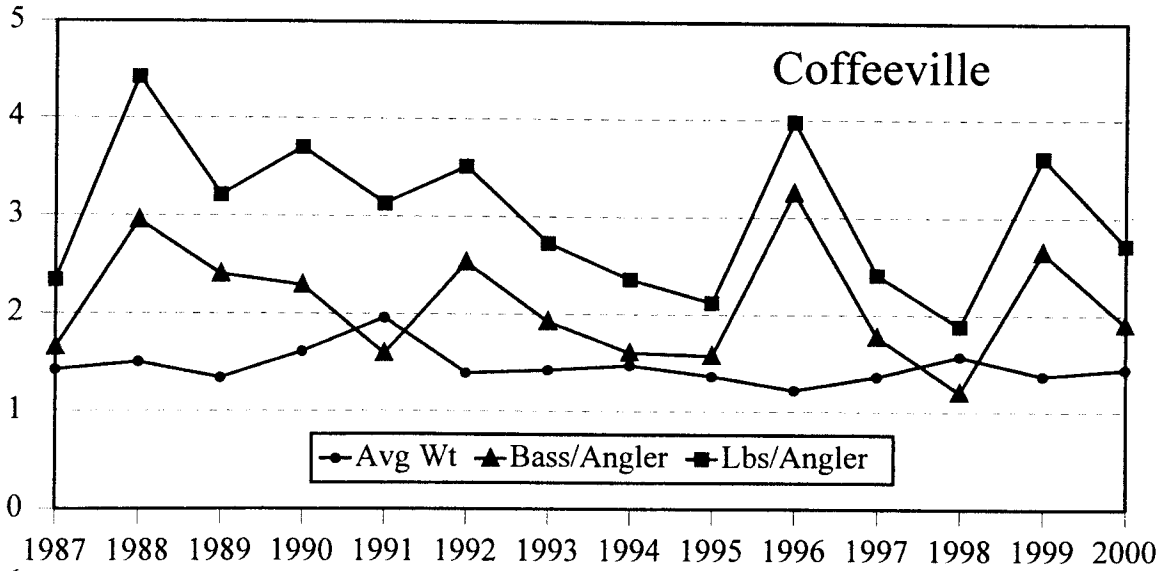
Figure 1. Annual catch for B.A.I.T. tournaments



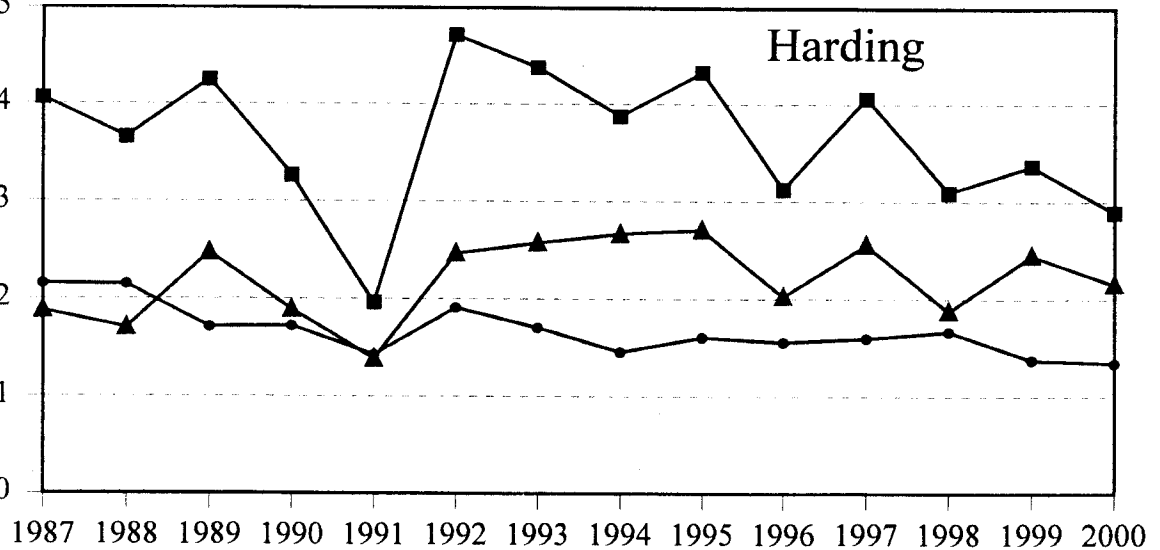
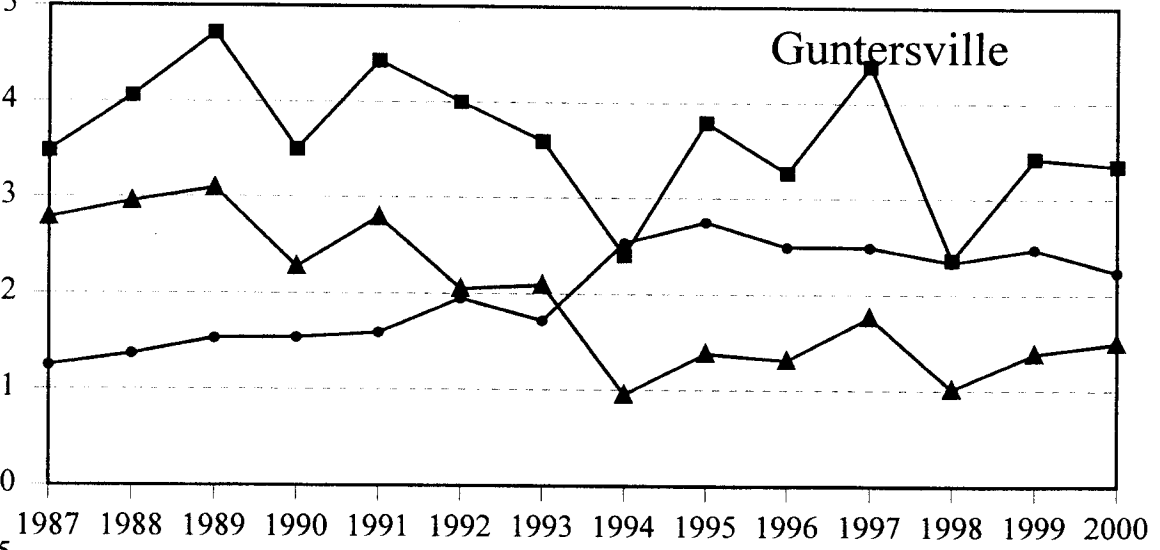
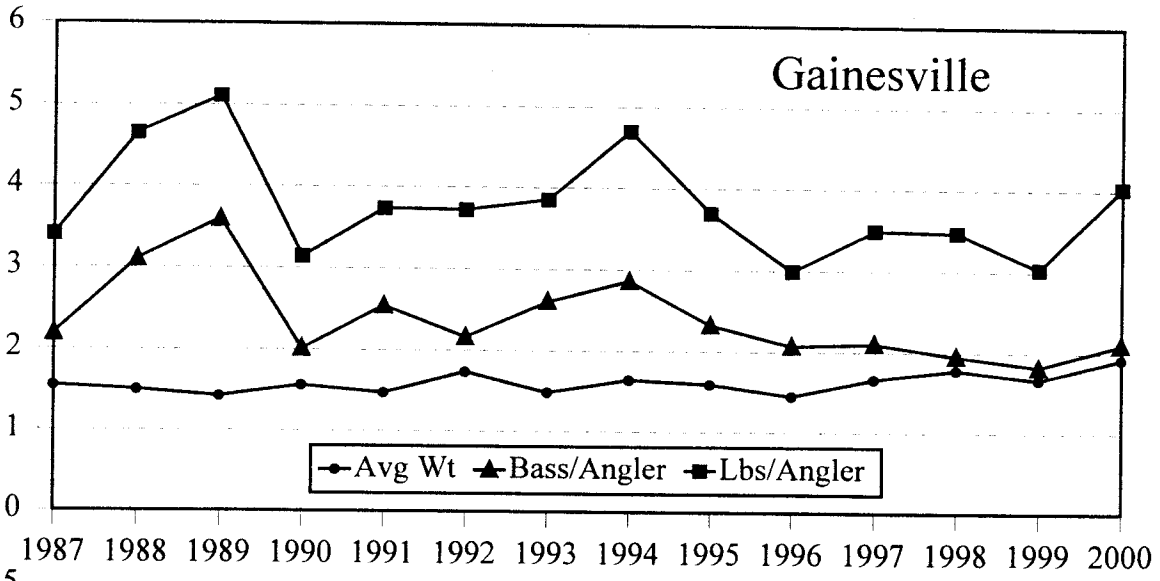
POUNDS OR NUMBER



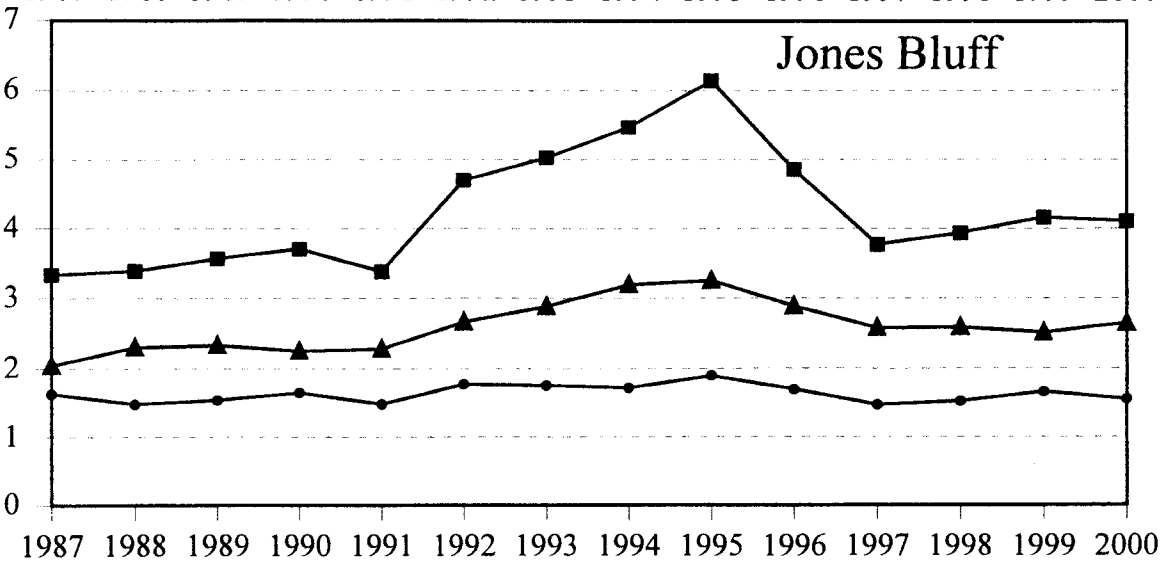
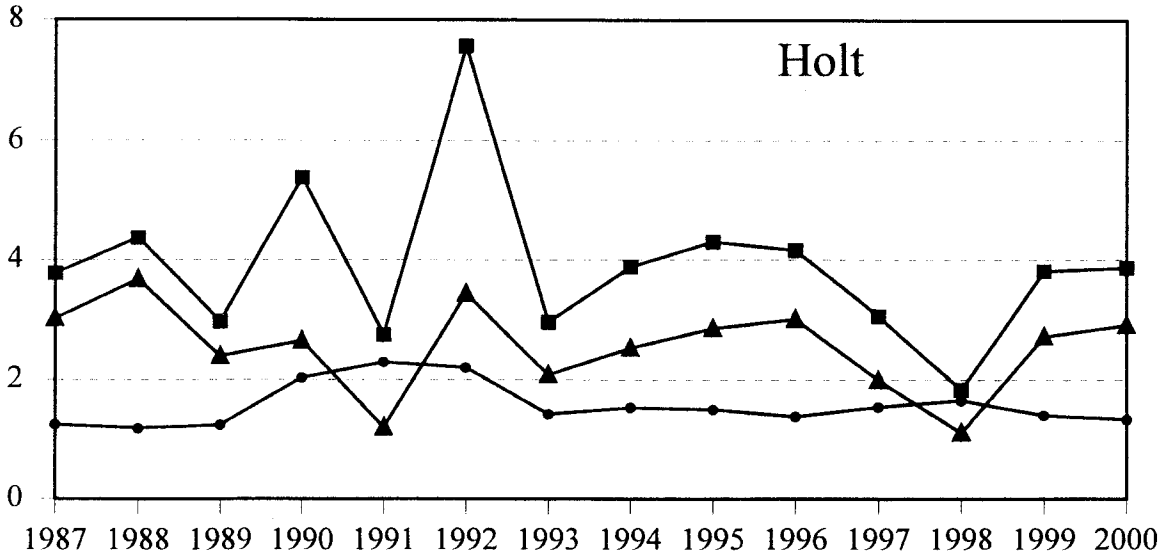
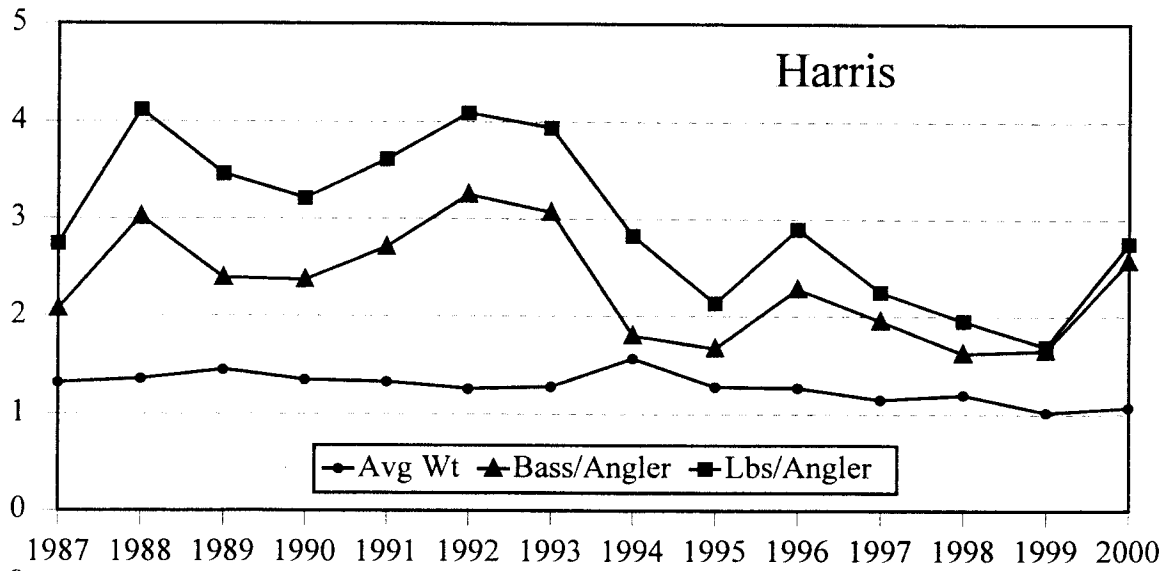
POUNDS OR NUMBER



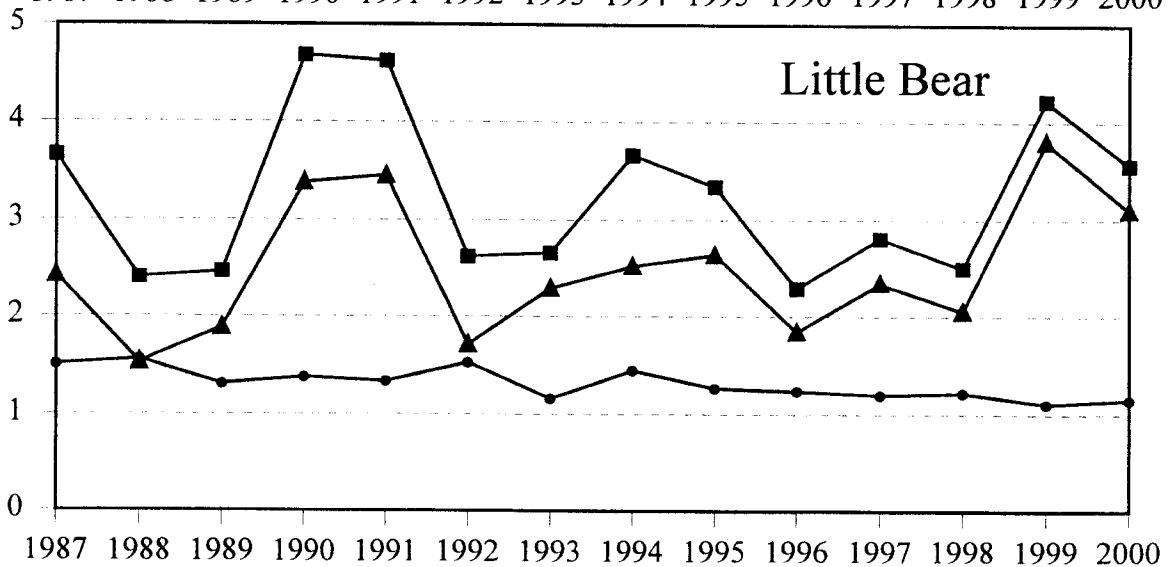
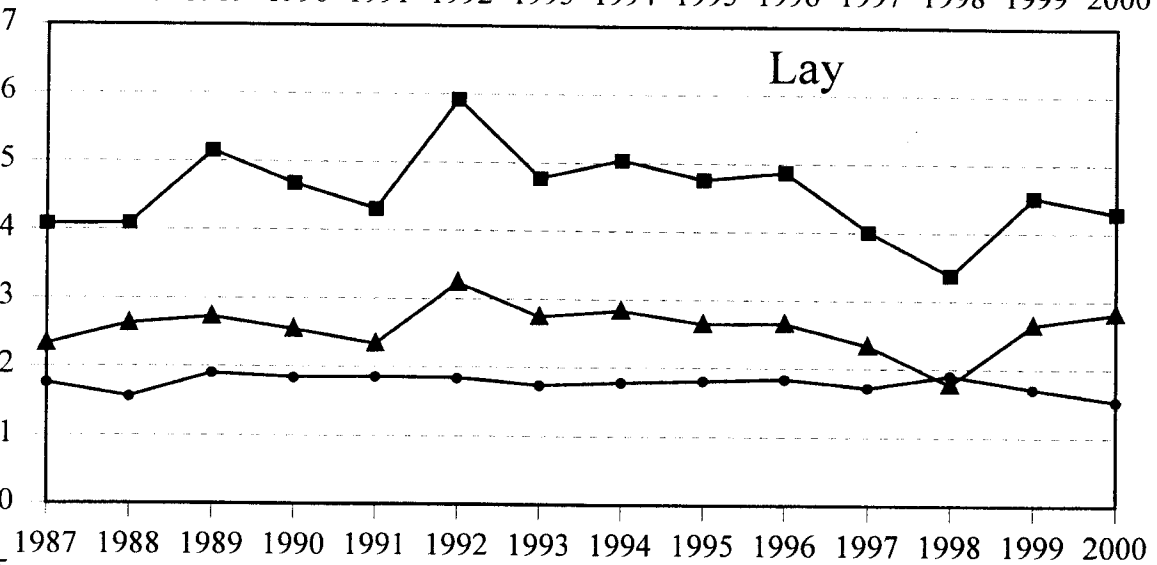
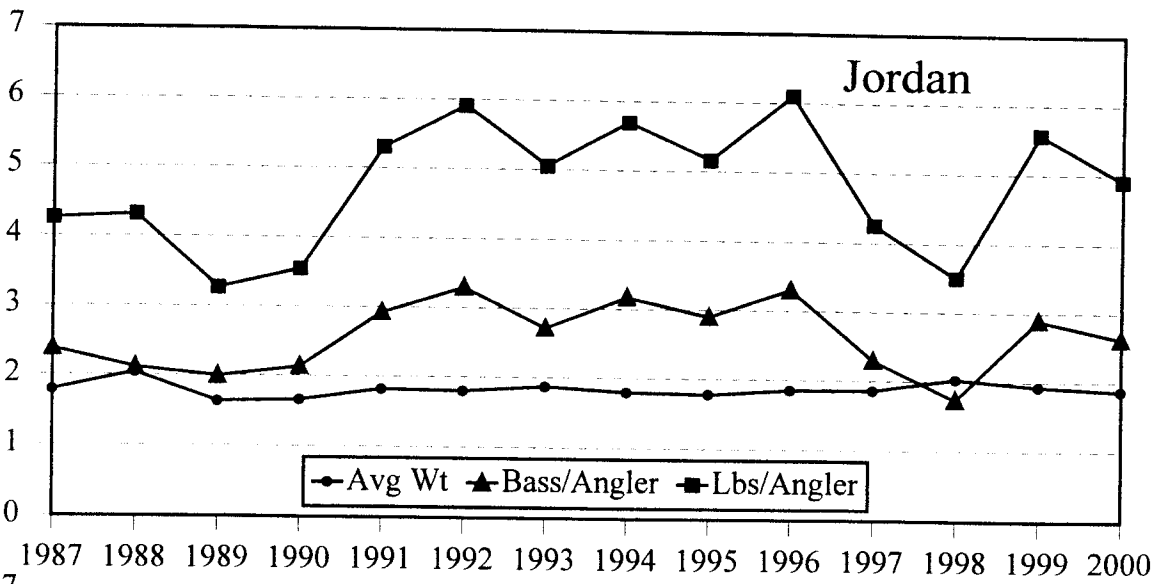
POUNDS OR NUMBER



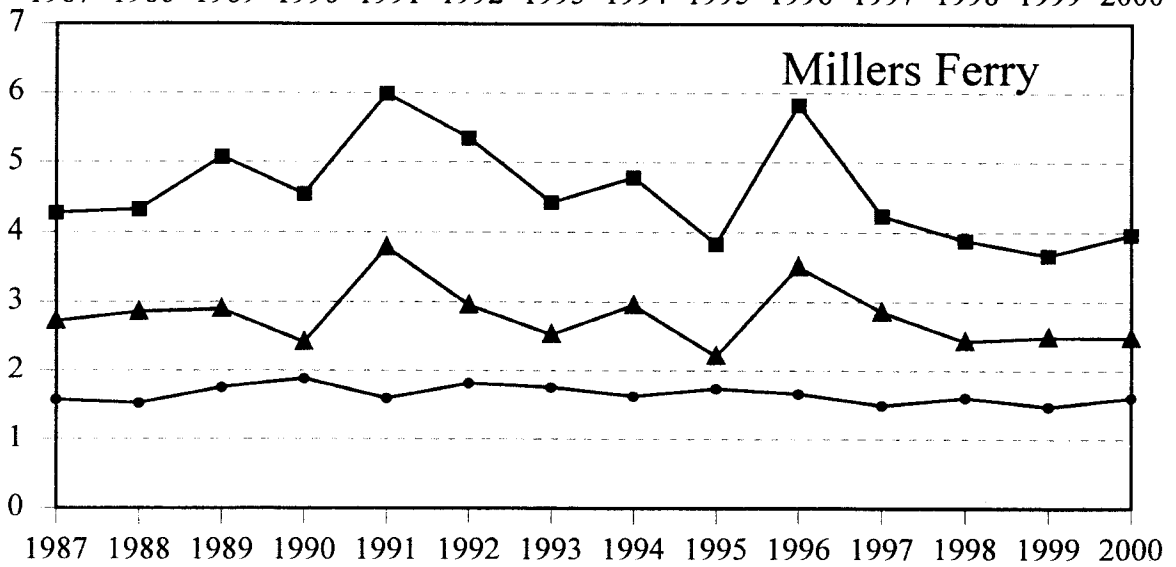
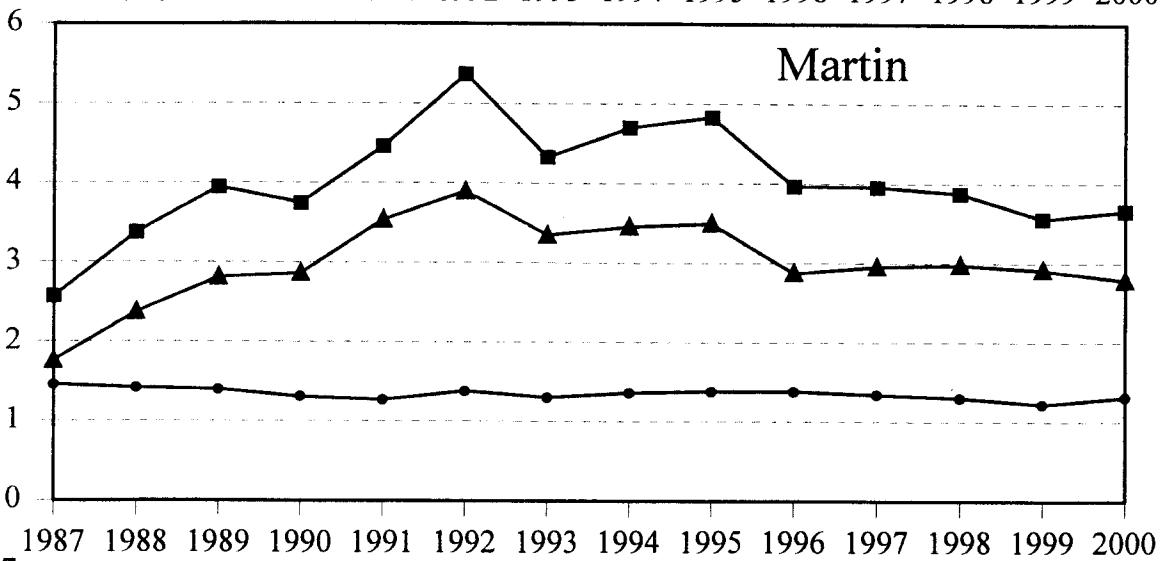
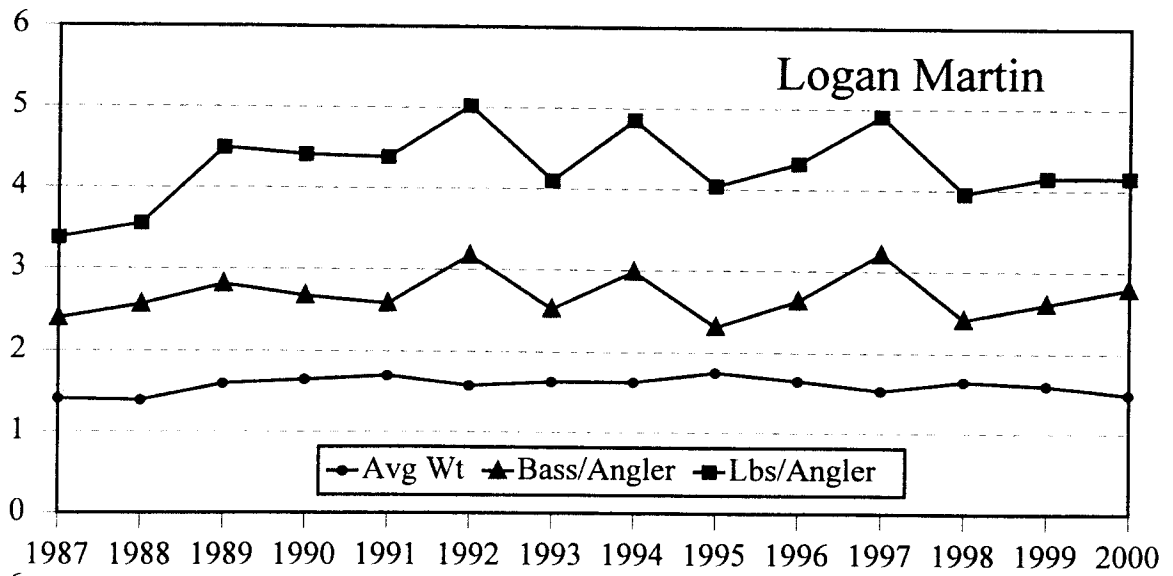
POUNDS OR NUMBER



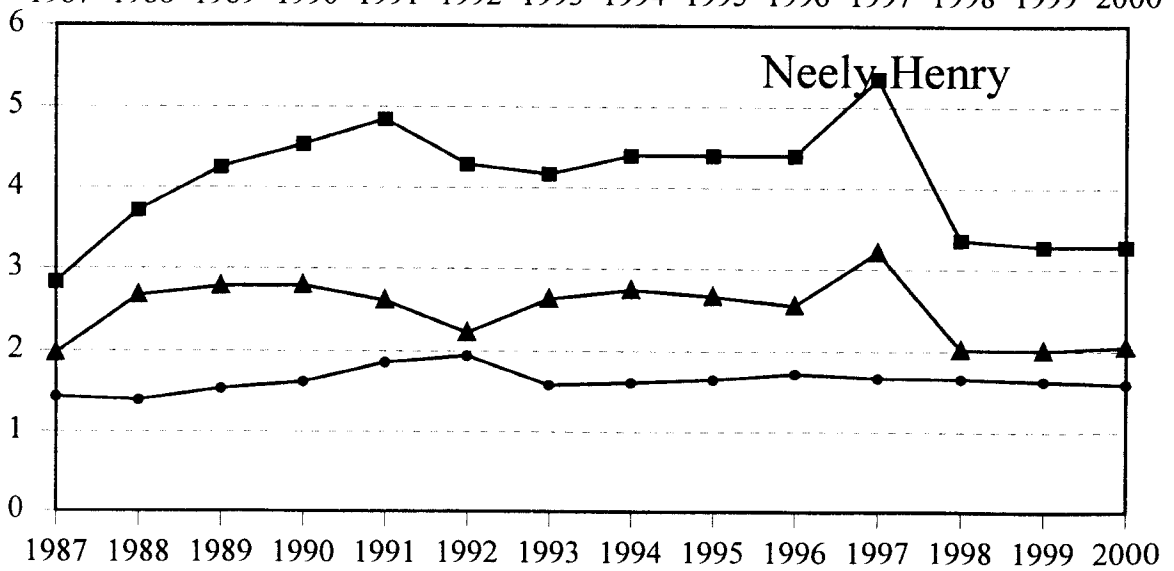
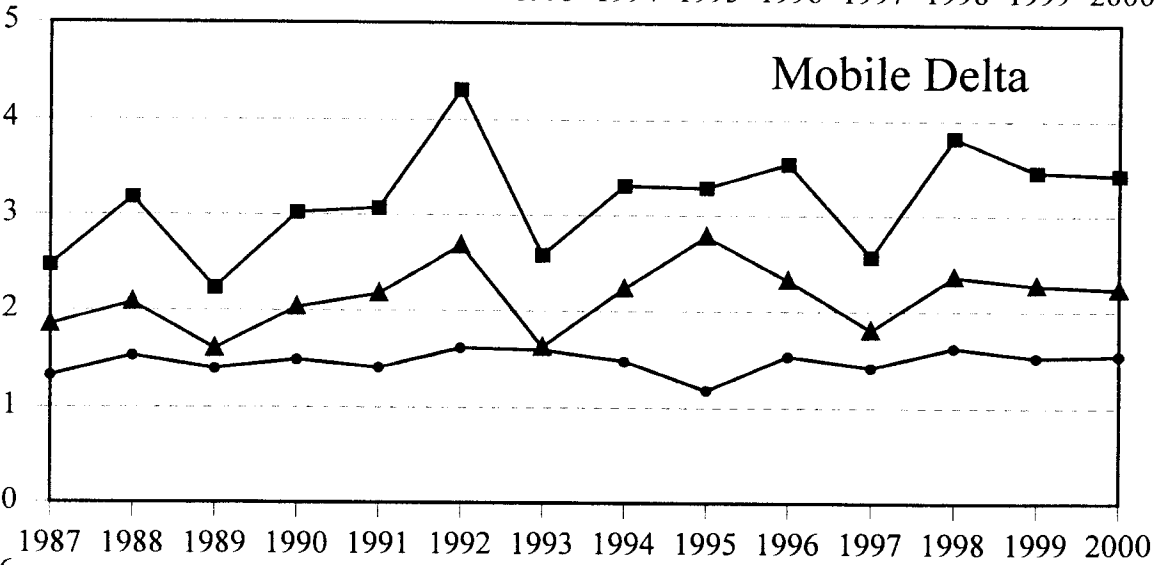
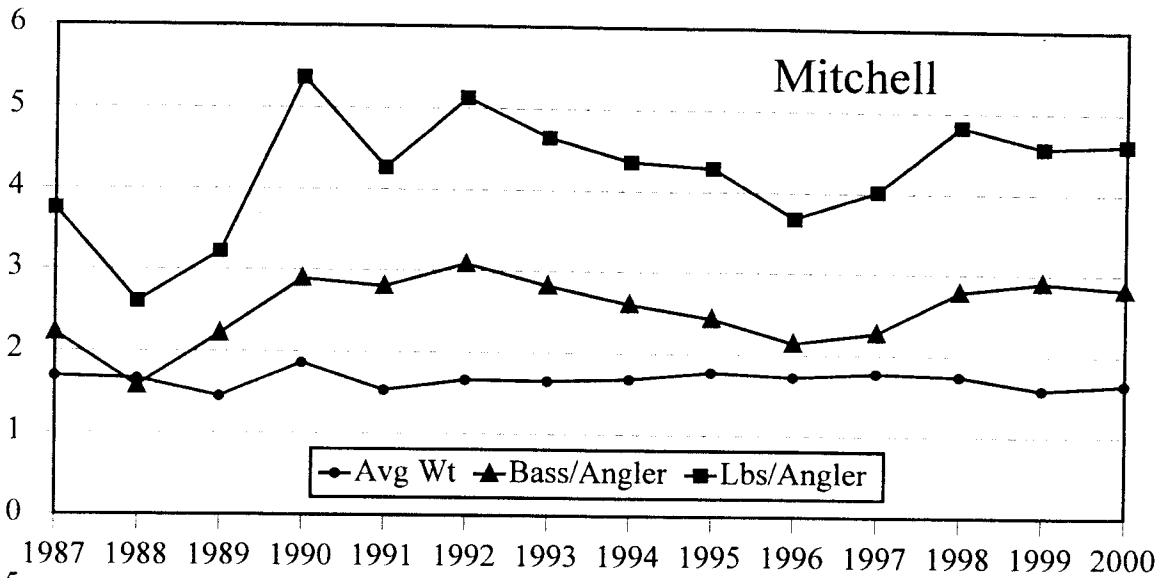
POUNDS OR NUMBER



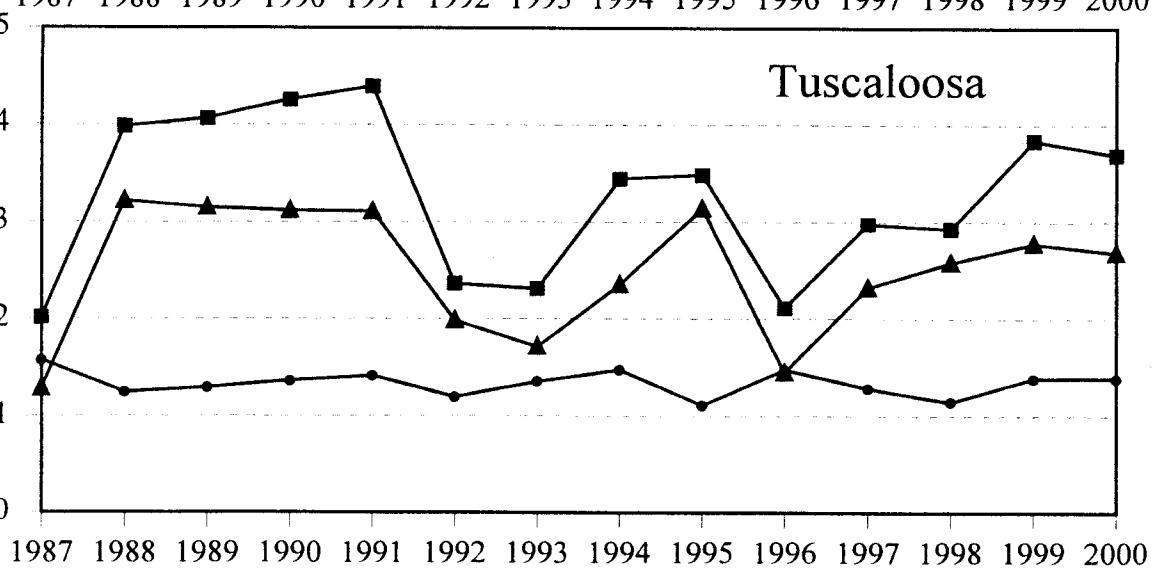
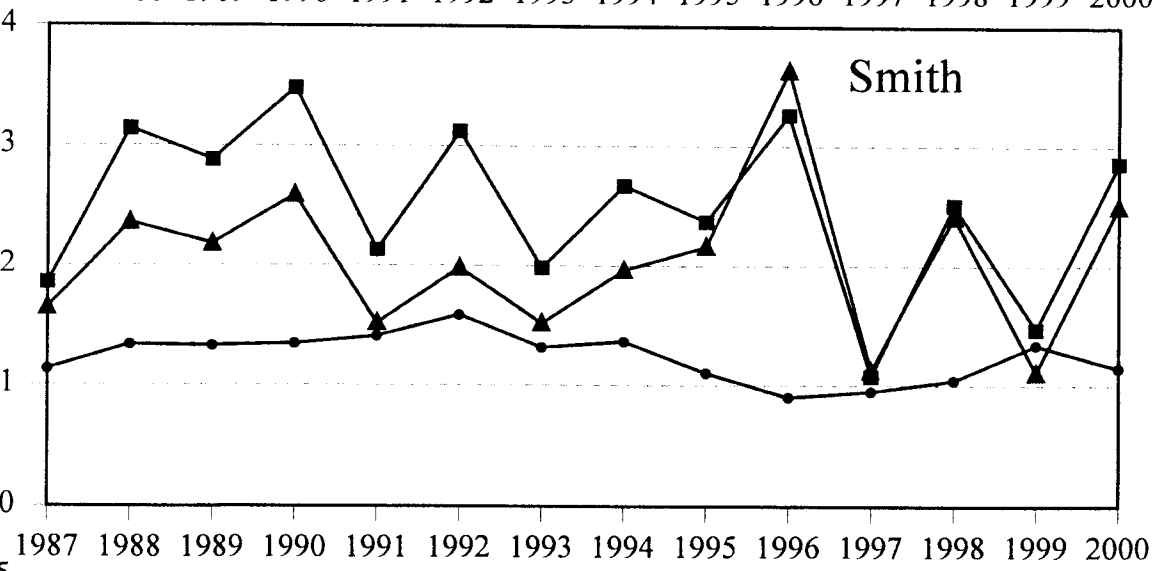
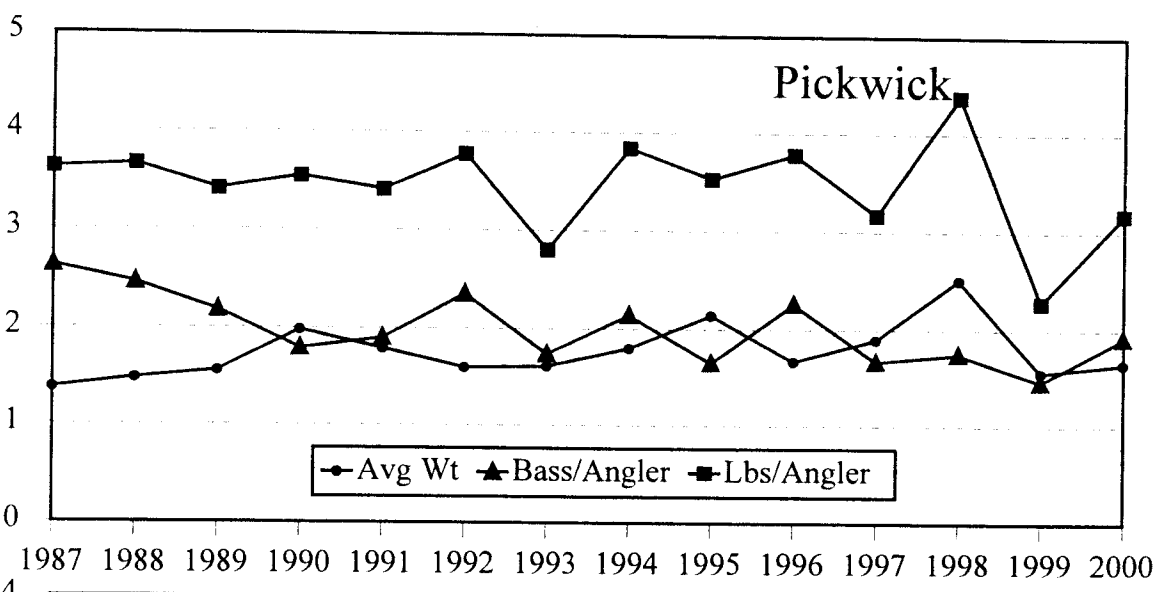
POUNDS OR NUMBER



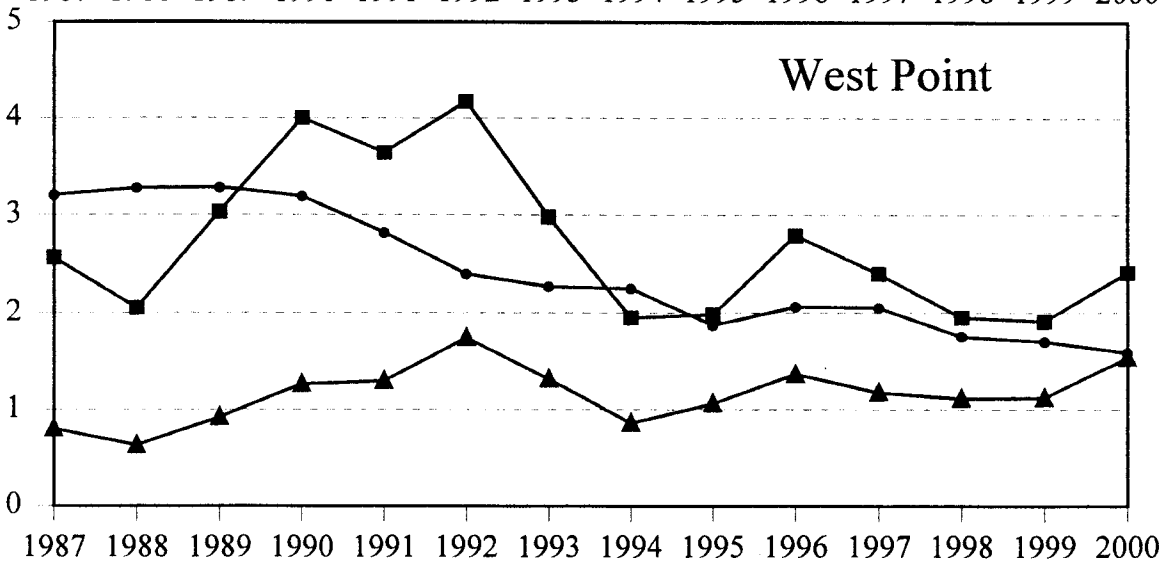
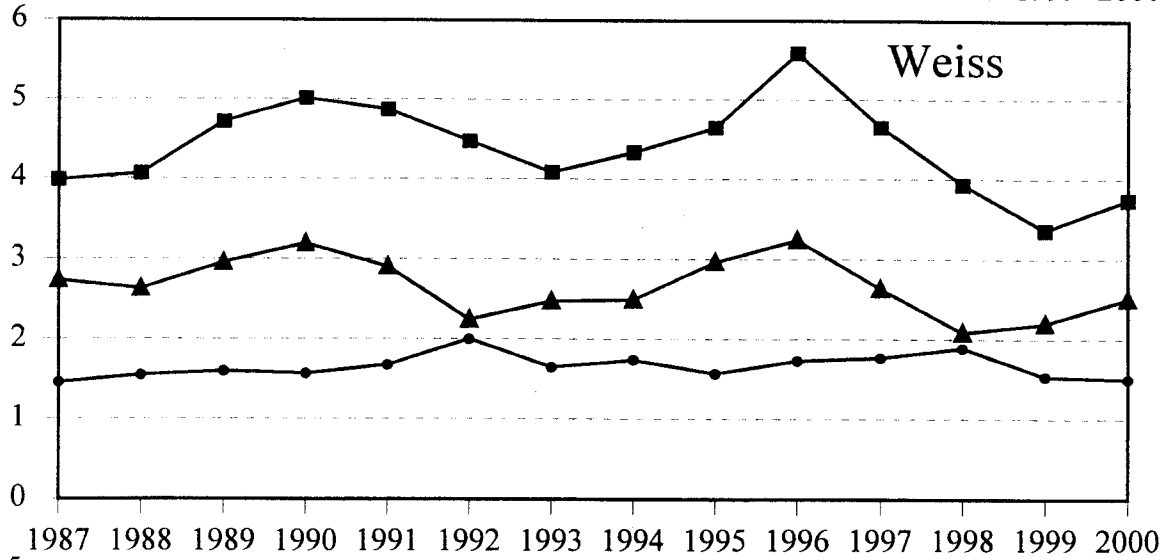
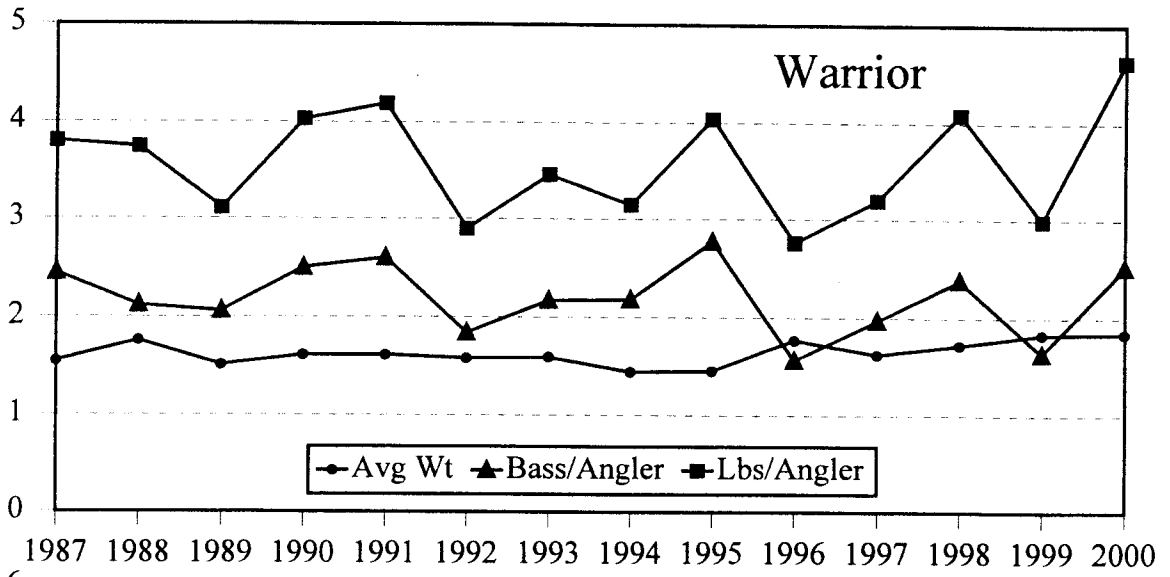
POUNDS OR NUMBER



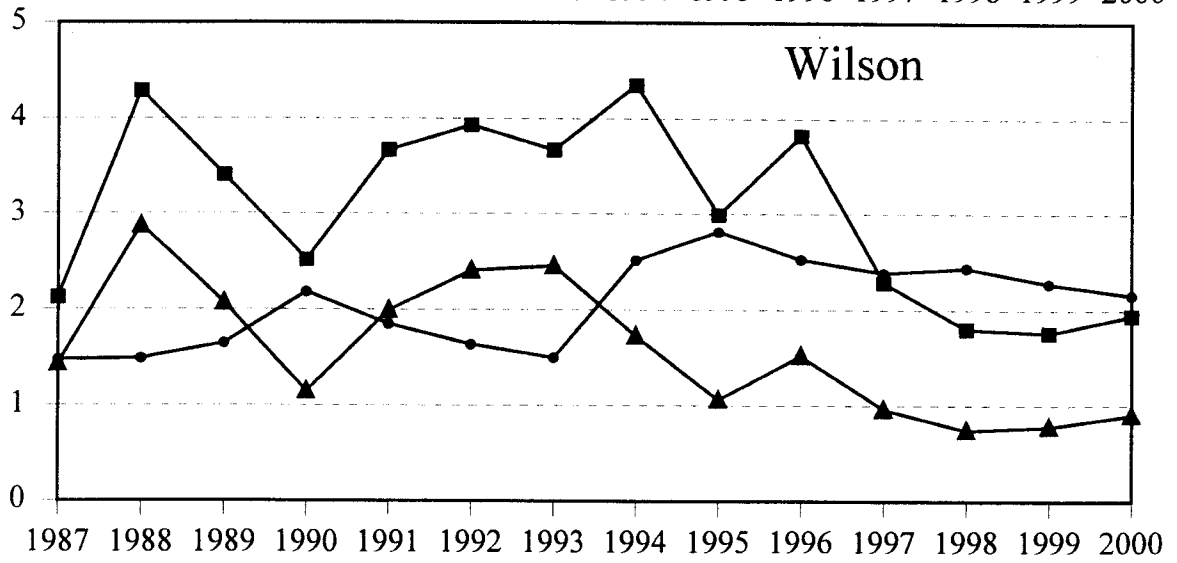
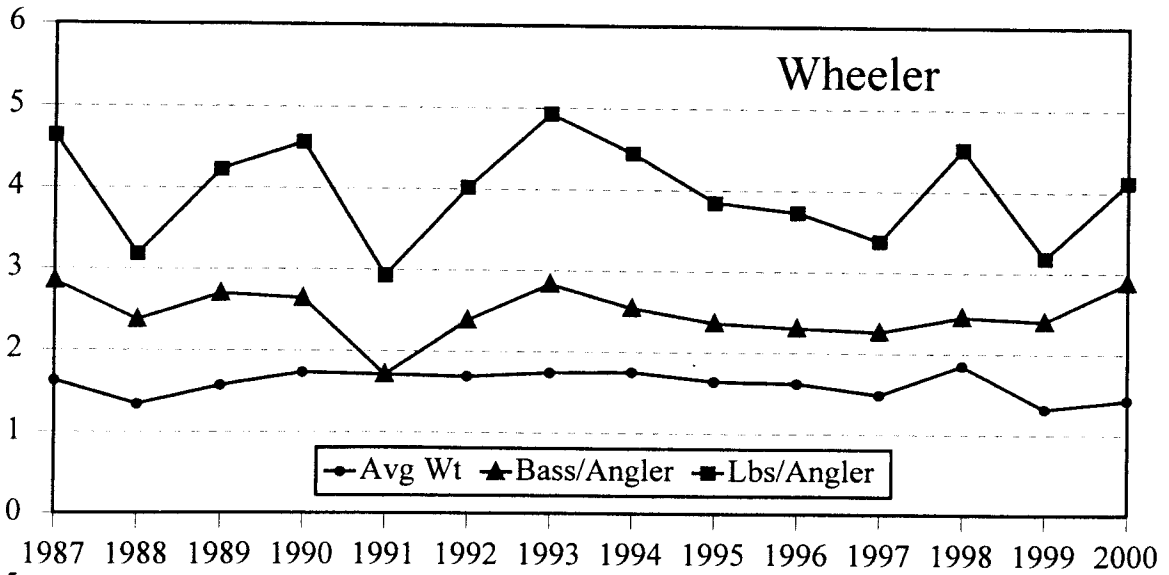
POUNDS OR NUMBER



POUNDS OR NUMBER



POUNDS OR NUMBER



The Department of Conservation and Natural Resources does not discriminate on the basis of race, color, religion, age, gender, national origin, or disability in its hiring or employment practices nor in admission to, or operations of its programs, services, or activities. This publication is available in alternative formats.

