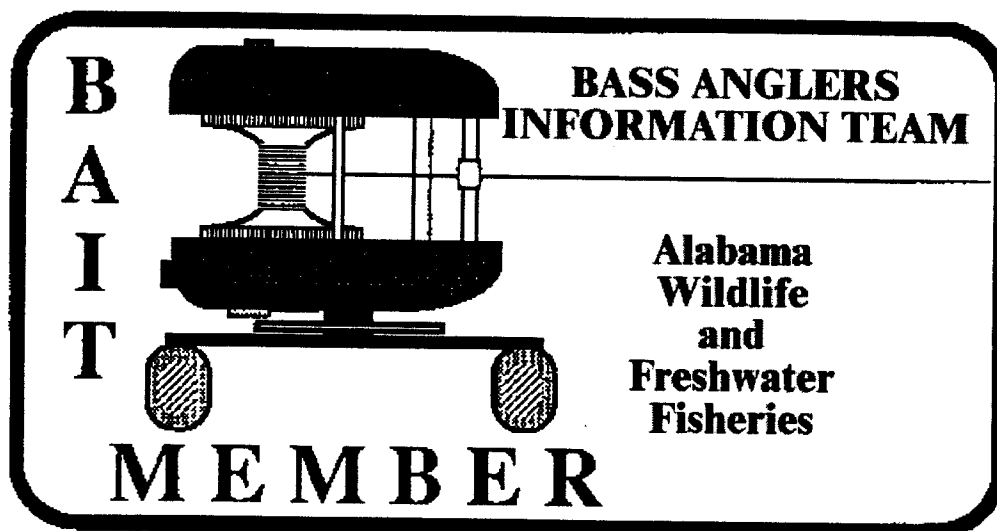


B.A.I.T.

**Bass Anglers Information Team
2001**



Department of Conservation and Natural Resources

Division of Wildlife and Freshwater Fisheries

Fisheries Section

64 North Union Street
Montgomery, Alabama 36130

**B.A.I.T.
Bass Anglers
Information Team
2001
Annual Report**

**by
William C. Nichols and James J. McHugh
Division of Wildlife and Freshwater Fisheries
Department of Conservation and Natural Resources**

*Funded in part by the Federal Aid to Sport Fish Restoration Program
Alabama DJ/WB Project F-38*

INTRODUCTION

The printing of the 2001 B.A.I.T. annual report marks the sixteenth year of the B.A.I.T. program. The objective of the program since its inception has been to gather information on bass populations by combining the efforts of bass club members and state fisheries scientists. The B.A.I.T. program summarizes catch data on reservoir bass populations that are collected and provided to us by participating clubs. This information is used by state fisheries scientists in combination with data from other sources as a basis for fisheries management decisions. Bass anglers use the report to establish future tournament sites or to locate a reservoir that provides a particular type of fishing action.

Through 2001, we have summarized 7,786 tournament reports. B.A.I.T. team anglers have spent 1,870,669 hours collecting data for this program. They have contributed data from 426,622 bass that weighed 713,565 pounds.

METHODS

Every year we attempt to maintain the support of the previous year's clubs and to enlist the support of new clubs through public meetings, news releases and letters. Participating club officers or tournament directors are sent the previous year's annual report, with tournament report postcards to be completed following each tournament. Clubs are assigned individual numbers to insure confidentiality. As tournament cards are received, they are checked for accuracy and entered into a computer database. Club officers are contacted when data are suspected to be erroneous. We compile and analyze the data following receipt of December tournament reports. Statewide tournament results are sorted by reservoir and by club.

To rank reservoirs, five "fishing quality" indicators were used: percent of successful anglers (percent of anglers with one or more bass at weigh-in), bass average weight, number of bass per angler-day, pounds of bass per angler-day, and hours required to catch a bass five pounds or larger. Since the length of a fishing day varies between

tournaments, an angler-day is defined as 10 hours of fishing effort. A minimum of five tournaments for an individual reservoir is considered necessary for minimum confidence in each reservoir dataset. Reservoirs with five or more tournament reports are ranked for each of the quality indicators. Values are assigned to each rank and an overall rank is determined for each reservoir by summing the values of the five quality indicators. This ranking system is intended to be a quick reference for club tournament site selection. It does not constitute a "best and worst" list of Alabama reservoirs and should not be interpreted that way.

RESULTS AND DISCUSSION

Bass clubs submitted 731 tournament reports during 2001. This is more data in terms of tournaments and tournament-hours reported than in any other year of the B.A.I.T. program. Club representatives did an excellent job filling out the cards and few reports were rejected due to incomplete or erroneous information. We want to again, thank all of the participants of the B.A.I.T. program and urge them to keep up the good work! Sixty-one clubs or tournament organizations provided data in 2001. Two hundred and eighty-eight reports from Alabama waters were received from Dr. Carl Quertermus of the University of West Georgia, who summarizes tournament data from the Georgia B.A.S.S. Federation and 54 reports from the Tennessee Wildlife Resource Agency that Tennessee clubs provided from Alabama reservoirs. Without their support, several Alabama reservoirs would not have been well represented in the quality indicator rankings (Table 2). Once again we must stress that reports from more locations increase the capability of the summaries to reflect actual fish population conditions and not just a good or poor day's fishing by one or two clubs.

In 2001, tournament reports were received for 32 bodies of water that were fished 165,487 hours. B.A.I.T. anglers caught 36,763 bass that weighed 58,338.4 pounds (Table 1). A total of 251 bass 5 pounds and larger were reported for an overall catch rate of one bass five pounds or larger for every 659 hours of fishing. The number of bass over eight pounds continues to decrease from 17 in 1997, 8 in 1998, 6 in both 1999 and 2000, to 4 in

2001 (Table 5). The largest bass weighed 9.13 pounds and was caught in Guntersville Reservoir. With 64 bass weighing five pounds or larger, Guntersville Reservoir has again led this category and this was up from a total of 30 in 2000.

Statewide catch rates in 2001 for number of fish per angler-day slightly decreased (Figure 1). The imposition of size limits in the 1990s explains some of the variability in angling success between the 1980s and present. The 2001 catch of 2.22 fish per angler-day was slightly down from 2.24 in 2000 but still considerably up from 2.05 fish per angler-day in 1999. The catch rate for pounds of bass per angler-day increased slightly from 3.50 in 2000 to 3.53 in 2001. Fifteen lakes improved in overall fishing success, four lakes recorded declines and four lakes remained about the same (Appendix A).

Of the 61 clubs or tournament organizations that submitted data during 2001, 39 submitted five or more tournament reports. Twenty-two clubs submitted 10 or more reports. Thirteen contributors submitted one report as compared to five contributors last year. All club representatives should understand that every tournament report is important if this program is to continue to be successful. A list of clubs contributing tournament results for the 2001 B.A.I.T. report is presented in Table 4.

More tournament reports were received from the Mobile Delta (68) than from any other location. West Point (67) was second and Eufaula (65) was third. Guntersville, Harding, Harris, Lay, Logan Martin, Martin, Neely Henry, Weiss, and Wheeler each had 20 or more tournament reports (Table 1). Twelve lakes were represented by 20 or more reports in 2001 which was down somewhat from 1999 and 2000 when 14 lakes had this level of reporting. A good distribution of reports provides more representative catch statistics from which meaningful summaries can be prepared.

Of the 32 reservoirs from which reports were received, 23 had five or more tournament reports (Table 1). The following comments deal with these 23 reservoirs, which are ranked by quality indicators in Table 2. The percent of successful anglers (those with one or more fish) ranged from 57 at Wilson to 84 at Millers Ferry. The average weight of bass caught ranged from 1.13 pounds at Harris to 2.28 pounds at

Guntersville. (Table 1). Catch rates expressed as bass per angler-day ranged from 1.13 at Wilson to 3.04 at Logan Martin. Catch rates as pounds per angler-day ranged from 2.46 at Wilson to 5.57 at Jordan. The statewide average weight for all 32 reservoirs was 1.59 pounds.

Overall, Millers Ferry reservoir accumulated more quality indicator points (94) than any other reservoir in Alabama, replacing Mitchell from last year. Lay (92) placed second and Jordan (91) came in third. Readers should note that the primary intent of Table 2 was not to determine the overall "best" reservoir, but to characterize the fishery of each reservoir. Anglers should first review the quality indicator that is most important to them. The overall rating would be used to narrow choices. For example, if an angler felt that fewer hours to catch bass greater than 5 pounds was the most important indicator, then Guntersville would be the first choice. However, Millers Ferry that ranked second in this category has a far better overall ranking and should provide large bass combined with other higher ranked qualities. If pounds per angler day were the most important indicator, Jordan would be the first choice even though it was third in overall score.

Bass data as expressed in the B.A.I.T. report from reservoirs with harvest restrictions or length limits will be biased since the data is a function of the restrictions. Length limits are imposed to increase the number of fish below a minimum length or within a specified length range (slot limit) which should eventually result in a supply of bass above the limit. Because all minimum lengths and length ranges will be above the 12-inch limit fished in most tournaments, the restrictions will reduce the total harvest in numbers and possibly pounds. However, those fish weighed in will be larger (longer) by virtue of the minimum length or slot limit when the restriction has become fully functional within the bass community. In the B.A.I.T. report, length limit lakes should rank high for average weight and near the bottom for percent success and bass per angler-day. For instance, bass per angler-day averaged 2.22 statewide but for Wilson it was low at 1.13. Statewide average weight in 2001 was 1.59 pounds for all 32 reservoirs but at Wilson, Guntersville, and Eufaula average weight was over 2.0 pounds. These average

weights were higher only because the fish weighed in are larger due to the imposed length limits.

Length limits remained in effect during 2001 on West Point (16-inch minimum on largemouth bass), Wilson and Guntersville (15-inch minimum on black bass), Eufaula (14-inch minimum on largemouth bass) and Demopolis (14-inch minimum on black bass), Pickwick (14-inch minimum on smallmouth bass), and Harris and Smith (13 to 16-inch slot on black bass). Some quality indicators from Demopolis and Wilson show slight increases over 1999 and 2000 data but bass harvest indicated that the minimum length limits at this time have not resulted in a meaningful positive trend in either reservoir. Additional sampling and more B.A.I.T. information will be needed to determine if the length limits at these reservoirs will be effective. Guntersville did appear to reflect a positive response in the bass population in 1999 from the implementation of a length limit but there have not been any additional significant increases in 2000 and 2001, with data continuing to remain at about the 1999 levels. Fishing as measured by the quality indicators at West Point during 2001 has continued to improve since 1999 in terms of bass/angler and pounds/angler but average weight continues to decrease. Fisheries biologists have noted a marked decrease in the fertility of West Point and an increase in the proportion of spotted bass to largemouth bass in this reservoir. Eufaula has shown a slight increase in pounds/angler and bass/angler in 2001 but continued to show a downward trend in average weight. Prior to 2001 all three quality indicators had remained flat to slowly declining since 1997. Standardized sampling has indicated that there had been an increase in the number of all sizes of bass but that they are in poorer condition and were exhibiting slower growth. Georgia and Alabama biologists discussed various management options and it was determined that the length limit would be reduced from 16 inches to 14 inches to allow increased bass harvest. This change in length limit took effect in November 2000. It is probably too early to determine if the increases in quality indicators for this reservoir are a direct result of this change in length limit. Lewis Smith's bass population has improved from 1999 but since 1996 it's performance has been erratic so this improvement may not yet indicate a trend. Pounds/angler and average

weight were both up from 2000 but bass/angler declined. It is very important that anglers continue to harvest largemouth and spotted bass smaller than 13 inches from Smith and Harris Lakes. Efforts to remove bass under 13 inches at Harris Reservoir are not progressing very quickly. The 2000 data had indicated an improvement in quality factors over 1999 but both bass/angler and pounds/angler declined somewhat in 2001 with the average weight remaining basically unchanged. The length limit on smallmouth bass in Pickwick is continuing to help sustain an excellent fishery for this species.

A trend that first appeared in the 1998 B.A.I.T. data that has become a major concern since is the large decrease in catch of bass over five pounds from reservoirs throughout the State. The average number of hours needed to catch a five pound or larger bass has increased from 265 in 1996 and 291 in 1997 to 594 in 1998 and 837 in 1999. In 2000 this amount of effort decreased to 685 hours and then to 659 hours in 2001 but these amounts of effort are still much higher than those seen in 1996 and 1997. It is still too early to determine if this trend is slowly reversing. This decrease in large fish in Alabama is occurring regardless of the river system, reservoir size, reservoir location, or type of management. A similar trend has been seen in Tennessee and Georgia and more recently in Oklahoma. Therefore, this phenomenon is at least regional in scope. It is uncertain at this time what has happened to cause such a response from all of these bass populations. All fish populations cycle to some degree. Most reservoirs have good bass spawning every year. The strength of a year-class of bass is determined not by the spawn but by the condition or state of health of bass as winter approaches. Bass fingerlings in poor condition or with low body fat experience high mortality and many do not survive their first winter. This dynamic process drives bass cycles up and down and directly affects the number of quality size bass available in four to five years. Our sampling data does not indicate a statewide failure of bass year-classes in the nineties. Also, B.A.I.T. data does not show that a problem has occurred with bass younger than age 3. This is indicated by the high rate of angling success in 2000 (73.9%) and 2001 (73.5%), as there has been every year. So we can eliminate early recruitment years as the problem. This would mean that the problem or mortality is occurring at a later time such as at three or four pounds.

Mortality is divided into angling and natural components. To suggest that harvest or delayed angling mortality, for some reason, has increased independently in just the last four years does not seem to be reasonable. We do know that angling pressure is increasing so angling mortality can not be completely dismissed at this time. Could it be natural mortality? Natural mortality can be attributed to predation, old age, parasites, diseases, pollution and environmental conditions. The only new problem that has been identified regionally in the last few years is the largemouth bass virus (LMBV). LMBV was first identified in the Santee-Cooper Reservoir of South Carolina in 1995. It has been found in bass populations throughout the southeast and as far north as Illinois and Michigan. LMBV has been attributed to largemouth bass mortalities in Alabama, Mississippi, Georgia, South Carolina, Texas and Louisiana. Adult bass two pounds and larger seem to be the most susceptible. We are continuing to support research to determine if LMBV, or some other factor, is the cause for the reductions in catch of larger bass. We are presently working with researchers at Auburn University and the U.S. Fish and Wildlife Service, Warm Springs Fish Health Center, to assess the presence of this virus in Alabama bass populations. In addition, fisheries management biologists and fisheries pathologists from across the country are now working together to learn more about this disease as quickly as possible in hopes of determining strategies to minimize its impact on our largemouth bass fisheries. To aid us in this effort please report any unusual bass die-offs to your district fisheries office.

Graphs in Appendix A provide you with a historical record of how your favorite waters have performed in the B.A.I.T. program. A few words of caution, these graphs are not restricted to bodies of water with five or more tournaments. Data points for some years may be represented by only a few tournaments. However, those situations are restricted to those water bodies that generally have not been included in the quality indicator rankings in Table 2. Secondly, when comparing water bodies, be aware that the scale on the vertical axes have maximum ranges that vary. You can use these graphs to predict 2002 fishing by looking for trends. Good luck in 2002 and don't forget to take a kid fishing. They are our future anglers and stewards of Alabama's resources.

*This report is available on Alabama's Division of Wildlife and Freshwater Fisheries
Internet Homepage: www.dcnr.state.al.us/agfd. Visit us for resource information and to send
email.*

Table 1. Statewide summary of tournaments for bass clubs participating in the 2001 B.A.I.T. Program.

Reservoir	Tourn. Number		Bass Anglers		Bass Success		Bass Weight > 5LB		Total Hours		Percent Success		Average Bass per Angler-day		Pounds per Angler-day		Hours per Bass > 5LB	
Aliceville	4	117	86	239	362.9	3	1324	73.50	1.52	1.81	2.74	441						
Bankhead	2	76	55	132	234.5	1	705	72.37	1.78	1.87	3.33	705						
Big Creek	2	32	27	82	106.3	0	271	84.38	1.30	3.03	3.92							
Cedar Creek	1	16	13	40	49.3	0	128	81.25	1.23	3.13	3.85							
Claiborne	3	30	27	97	124.6	0	322	90.00	1.28	3.01	3.87							
Coffeeville	9	391	172	611	972.2	1	3415	43.99	1.59	1.79	2.85	3415						
Demopolis	11	895	658	1499	2690.7	3	8915	73.52	1.80	1.68	3.02	2972						
Eufaula	65	1044	723	1912	4027.6	25	12616	69.25	2.11	1.52	3.19	505						
Gainesville	5	137	98	329	456.9	1	1594	71.53	1.39	2.06	2.87	1594						
Guntersville	44	1274	916	2029	4635.2	64	13649	71.90	2.28	1.49	3.40	213						
Harding	39	604	473	1280	1716.1	2	5463	78.31	1.34	2.34	3.14	2731						
Harris	28	502	357	924	1041.5	6	4168	71.12	1.13	2.22	2.50	695						
Holt	1	6	5	10	21.0	0	48	83.33	2.10	2.08	4.38							
Jones Bluff	10	129	84	303	520.9	2	1163	65.12	1.72	2.61	4.48	582						
Jordan	19	353	260	974	1836.5	5	3296	73.65	1.89	2.96	5.57	659						
Lay	29	512	409	1497	2361.0	10	5100	79.88	1.58	2.94	4.63	510						
Logan Martin	51	1441	1105	4166	6399.5	17	13699	76.68	1.54	3.04	4.67	806						
Martin	34	618	484	1899	2468.7	4	6779	78.32	1.30	2.80	3.64	1695						
Millers Ferry	18	290	244	765	1211.0	8	2800	84.14	1.58	2.73	4.32	350						
Mitchell	15	339	251	908	1439.0	5	3058	74.04	1.58	2.97	4.71	612						
Mobile Delta	68	1203	771	1989	2826.3	2	11129	64.09	1.42	1.79	2.54	5564						
Neely Henry	35	718	529	1585	2397.9	4	6320	73.68	1.51	2.51	3.79	1580						
Pickwick	43	1680	1228	3001	5074.3	35	14805	73.10	1.69	2.03	3.43	423						
Smith	9	527	422	1045	1417.2	1	4608	80.08	1.36	2.27	3.08	4608						
Tuscaloosa	3	338	312	1156	1290.9	0	5380	92.31	1.12	2.15	2.40							
Upper Bear	4	62	40	119	146.4	3	521	64.52	1.23	2.28	2.81	174						
Warrior	9	306	212	715	1110.0	5	3140	69.28	1.55	2.28	3.53	628						
Weiss	50	895	715	2327	3452.9	13	8801	79.89	1.48	2.64	3.92	677						
West Point	67	1059	789	2200	3328.0	16	10607	74.50	1.51	2.07	3.14	663						
Wheeler	38	1013	779	2695	4131.9	12	9749	76.90	1.53	2.76	4.24	812						
Wilson	13	184	105	181	394.8	0	1608	57.07	2.18	1.13	2.46							
Yates	2	31	17	54	92.6	3	310	54.84	1.71	1.74	2.99	103						
Grand Total	731	16822	12366	36763	58338.4	251	165487	73.51	1.59	2.22	3.53	659						

Table 2. Ranking by quality indicators for all reservoirs with five or more tournament reports in the 2001 B.A.I.T. program.

Rank	Percent Success	Average Weight	Bass per Angler-day	Pounds per Angler-day	Hours per Bass>5LB	Overall	Value
1	Millers Ferry	Guntersville	Logan Martin	Jordan	Guntersville	Millers Ferry	94
2	Smith	Wilson	Mitchell	Mitchell	Millers Ferry	Lay	92
3	Weiss	Eufaula	Jordan	Logan Martin	Pickwick	Jordan	91
4	Lay	Jordan	Lay	Lay	Eufaula	Mitchell	90
5	Martin	Demopolis	Martin	Jones Bluff	Lay	Logan Martin	82
6	Harding	Jones Bluff	Wheeler	Millers Ferry	Jones Bluff	Jones Bluff	74
7	Wheeler	Pickwick	Millers Ferry	Wheeler	Mitchell	Weiss	73
8	Logan Martin	Coffeeville	Weiss	Weiss	Warrior	Wheeler	72
9	West Point	Mitchell	Jones Bluff	Neely Henry	Jordan	Guntersville	68
10	Mitchell	Millers Ferry	Neely Henry	Martin	West Point	Pickwick	67
11	Neely Henry	Lay	Harding	Warrior	Weiss	Martin	61
12	Jordan	Warrior	Warrior	Pickwick	Harris	Neely Henry	60
13	Demopolis	Logan Martin	Smith	Guntersville	Logan Martin	Eufaula	59
14	Pickwick	Wheeler	Harris	Eufaula	Wheeler	Warrior	59
15	Guntersville	Neely Henry	West Point	Harding	Neely Henry	West Point	54
16	Gainesville	West Point	Gainesville	West Point	Gainesville	Harding	49
17	Harris	Weiss	Pickwick	Smith	Martin	Smith	47
18	Warrior	Mobile Delta	Coffeeville	Demopolis	Harding	Demopolis	45
19	Eufaula	Gainesville	Mobile Delta	Gainesville	Demopolis	Gainesville	34
20	Jones Bluff	Smith	Demopolis	Coffeeville	Coffeeville	Harris	32
21	Mobile Delta	Harding	Eufaula	Mobile Delta	Smith	Coffeeville	31
22	Wilson	Martin	Guntersville	Harris	Mobile Delta	Wilson	27
23	Coffeeville	Harris	Wilson	Wilson	Wilson	Mobile Delta	19

Table 3. Tournament summary for all bass clubs participating in the 2001 B.A.I.T. program.

Club	Tourn. Number	Bass Anglers		Bass Success		Bass Number		Bass Weight		Bass >5LB		Total Hours	Percent Success	Average		Bass per		Hours per	
		Anglers	Success	Number	Weight	Weight	>5LB	Weight	Angler-day	Angler-day	Pounds per Angler-day			Pounds per Angler-day	Bass>5LB				
1	10	173	124	375	533.7	5	1646	71.68	1.42	2.28	3.24	329							
2	1	46	22	134	238.6	1	414	47.83	1.78	3.24	5.76	414							
3	2	33	23	80	120.1	0	297	69.70	1.50	2.69	4.04	309							
4	11	103	80	257	455.8	3	927	77.67	1.77	2.77	4.92	756							
5	9	327	265	795	1390.1	4	3025	81.04	1.75	2.63	4.60	864							
6	1	96	85	168	300.0	1	864	88.54	1.79	1.94	3.47	1268							
7	12	151	119	337	544.8	1	1268	78.81	1.62	2.66	4.30	1789							
8	12	404	177	609	977.2	2	3578	43.81	1.60	1.70	2.73	2155							
9	14	226	143	340	564.7	1	2155	63.27	1.66	1.58	2.62	502							
10	11	175	131	484	820.8	4	2008	74.86	1.70	2.41	4.09	536							
11	4	65	37	67	133.0	1	536	56.92	1.99	1.25	2.48	1293							
12	10	186	166	523	773.5	0	1840	89.25	1.48	2.84	4.20	1578							
13	11	256	163	683	851.4	2	2585	63.67	1.25	2.64	3.29	820							
14	14	190	122	290	496.3	1	1578	64.21	1.71	1.84	3.15	169							
15	10	93	68	172	273.5	1	820	73.12	1.59	2.10	3.34	874							
16	7	124	73	246	536.6	6	1016	58.87	2.18	2.42	5.28	670							
17	3	105	86	154	292.0	1	874	81.90	1.90	1.76	3.34	88							
18	12	241	116	345	600.0	3	2009	48.13	1.74	1.72	2.99	1633							
19	1	11	9	16	30.6	1	88	81.82	1.91	1.82	3.48	528							
20	6	2044	1522	4487	7084.7	13	21223	74.46	1.58	2.11	3.34	967							
21	7	240	80	290	594.6	4	2111	33.33	2.05	1.37	2.82	989							
22	9	109	84	227	293.0	1	967	77.06	1.29	2.35	3.03	495							
23	5	315	228	528	856.3	3	2966	72.38	1.62	1.78	2.89	563							
24	7	113	88	193	391.5	2	991	77.88	2.03	1.95	3.95	477							
25	13	129	94	221	423.7	2	1127	72.87	1.92	1.96	3.76	25							
26	7	287	134	594	1053.7	5	2385	46.69	1.77	2.49	4.42	743							
27	1	14	12	24	63.1	5	126	85.71	2.63	1.90	5.01	525							
28	4	106	65	123	190.7	0	848	61.32	1.55	1.45	2.25	88							
29	7	101	85	301	529.5	2	1049	84.16	1.76	2.87	5.05	88							
30	1	12	6	26	37.9	0	108	50.00	1.46	2.41	3.51	88							
31	3	63	45	98	160.7	1	743	71.43	1.64	1.32	2.16	88							
32	4	42	26	75	115.3	0	393	61.90	1.54	1.91	2.94	88							

Table 3 (cont.). Tournament summary for bass clubs participating in the 2001 B.A.I.T. program.

Club Number	Tourn.	Bass Anglers		Bass Number		Bass Weight		Bass >5LB		Total Hours	Percent Success	Average Weight		Bass per Angler-day		Hours per Bass >5LB	
		Success	Success	Success	Success	Success	Success	Success	Success			Success	Success	Success	Success	Success	Success
33	4	125	114	316	501.7	2	1134	91.20	1.59	2.79	4.42	567					
34	1	19	14	48	67.0	0	181	73.68	1.40	2.66	3.71						
35	1	18	18	70	94.6	1	342	100.00	1.35	2.05	2.77	342					
36	5	54	43	102	143.1	0	508	79.63	1.40	2.01	2.82						
37	1	38	31	97	144.0	0	304	81.58	1.48	3.19	4.74						
38	11	214	167	331	527.8	3	1739	78.04	1.59	1.90	3.03	580					
39	6	150	130	448	706.8	2	1441	86.67	1.58	3.11	4.91	720					
40	1	23	23	86	98.1	0	184	100.00	1.14	4.67	5.33						
41	6	118	80	291	474.2	3	1197	67.80	1.63	2.43	3.96	399					
42	6	99	75	232	364.5	3	1682	75.76	1.57	1.38	2.17	561					
43	11	461	395	1297	2123.4	7	4523	85.68	1.64	2.87	4.69	646					
44	13	254	111	443	759.4	4	2600	43.70	1.71	1.70	2.92	650					
45	1	129	76	228	420.9	0	1161	58.91	1.85	1.96	3.63						
46	6	44	31	81	151.3	0	352	70.45	1.87	2.30	4.30						
47	10	105	80	227	301.5	1	1038	76.19	1.33	2.19	2.90	1038					
49	8	84	66	182	301.0	2	1079	78.57	1.65	1.69	2.79	540					
50	9	151	95	205	259.9	0	1414	62.91	1.27	1.45	1.84						
51	1	20	14	52	49.4	2	180	70.00	0.95	2.89	2.74	90					
52	1	72	56	198	362.0	0	1368	77.78	1.83	1.45	2.65						
53	14	183	162	592	958.0	2	1940	88.52	1.62	3.05	4.94	970					
54	1	30	7	30	45.6	1	240	23.33	1.52	1.25	1.90	240					
55	2	26	26	90	93.7	0	260	100.00	1.04	3.46	3.60						
56	12	190	79	251	357.9	0	1668	41.58	1.43	1.50	2.15						
57	10	147	106	260	350.3	0	1381	72.11	1.35	1.88	2.54						
58	12	219	146	443	532.0	0	1980	66.67	1.20	2.24	2.69						
59	54	2289	1751	4031	7408.5	80	21584	76.50	1.84	1.87	3.43	270					
60	288	4703	3735	12074	18101.3	62	49083	79.42	1.50	2.46	3.69	792					
61	7	277	257	796	912.9	0	2366	92.78	1.15	3.36	3.86						

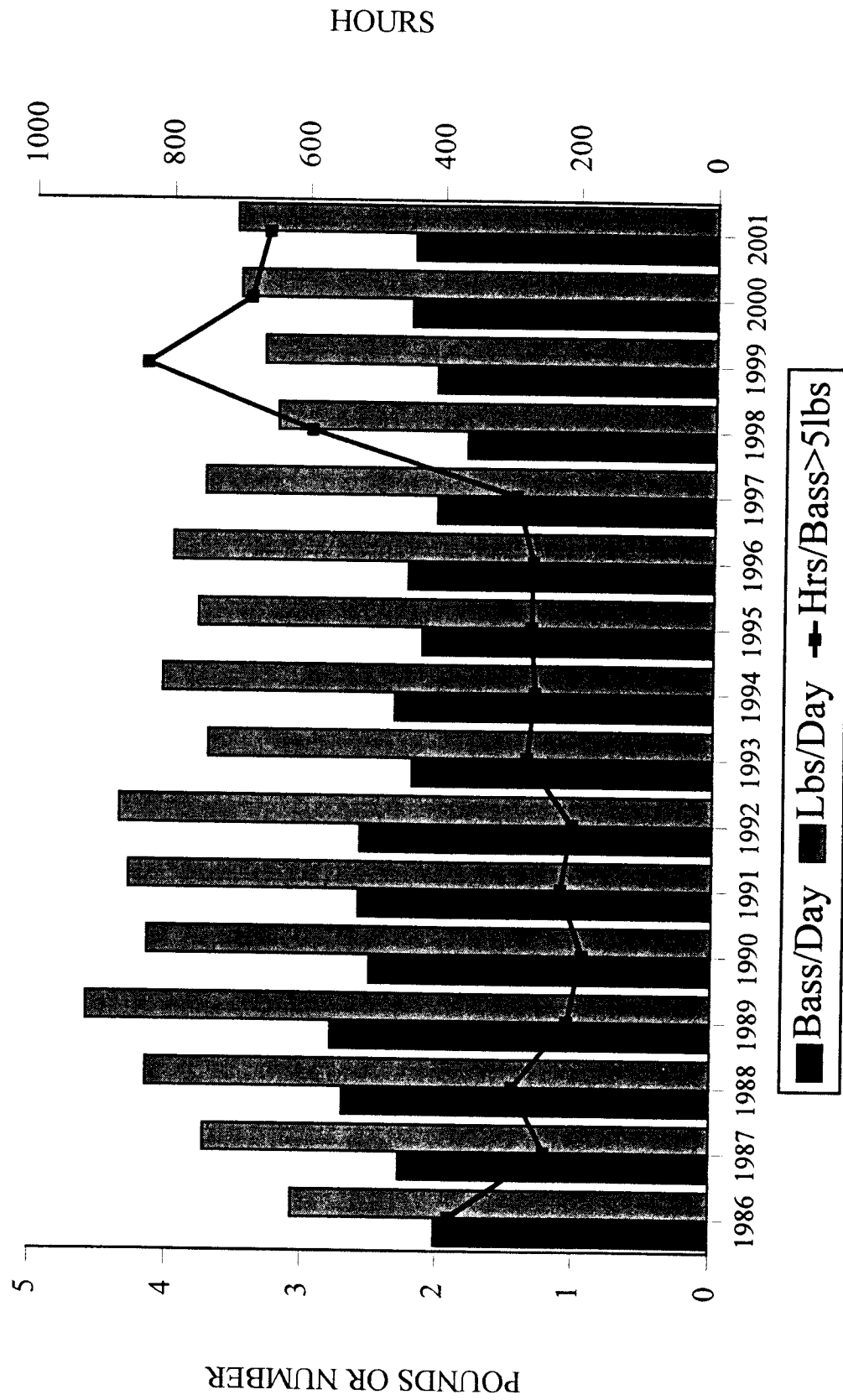
Table 4. Clubs supporting the 2001 B.A.I.T. annual report.

CLUB NAME	ADDRESS	CITY	STATE	ZIP	CLUB REP	PHONE
A & M BASSMASTERS	128 JEFF McMICHAEL DR	WAYNESBORO	MS	39367	DALE McMICHAEL	601-735-1011
ALABAMA BASS FEDERATION	P.O. BOX 190	NOTASULGA	AL	36866	AL REDDING	334-257-1177
AMBASSADORS BASS CLUB	P.O. BOX 932	IRVINGTON	AL	36544	BRIAN DODGE	334-957-2212
AUBURN BASSMASTERS	1008 GENTRY DR	AUBURN	AL	36830	RANDY KING	334-821-6670
BALDWIN COUNTY BASSMASTERS	13411 CO. RD. 3	FAIRHOPE	AL	36532	LARRY YOUNG	251-928-1052
BAMA BASS GANG	P.O. BOX 1004	HANCEVILLE	AL	35077	DAWN MITCHELL	256-287-1292
BAMA BASSMASTERS	16150 BEAMS RD	NORTHPORT	AL	35475	WALTER KARR	205-339-5727
BAY AREA BASSMASTERS	808 MICHIGAN AVE	FAIRHOPE	AL	36532	ELMER VICK	251-928-7016
BLACK WARRIOR BASS TRACKERS	5514 SUMMERFIELD DR E	TUSCALOOSA	AL	35404	CHARLIE TIDMORE	205-553-2919
BLACKWATER BASS CASTERS	322 S. MAGNOLIA	LAUREL	MS	39440	VERNON McCREE	601-425-4852
BLUFF CITY BASSMASTERS	301 FIVE MILE RD	EUFULA	AL	36027	JIM HOWARD	334-616-6956
BOEING BASS CLUB	26555 LAMBERT RD	ELKMONT	AL	36570	JONATHAN MANTEUFFEL	256-423-8674
BREWTON BASSMASTERS	P.O. BOX 2222	EAST BREWTON	AL	36427	ALLEN COUCH	334-867-9852
CALHOUN COUNTY BASSMASTERS	135 GREENVALE DR	OXFORD	AL	36203	TOM DIXON	256-236-3719
CHICKASABOUGE BASSMASTERS	405 VAUGHN DR S	SATSUMA	AL	36572	JAKE BUSH	251-675-9422
CLAY COUNTY BASS BUSTERS	62 COUNTY ROAD 8021	LINEVILLE	AL	36266	BRIAN BUTTER	256-396-6100
COMMERCIAL LUBRICANTS	2120 WESTLAND DR. S.W.	CLEVELAND	TN	37311	JIM PAYNE	423-339-5637
COOSA LODGE 622	P.O. BOX 534	COOSA	GA	30129	CELL RAMEY	706-235-9029
COOSA VALLEY BASSMASTERS	1519 DYE CREEK LN	PELL CITY	AL	35128	MIKE STAGGS	205-324-5418
DALLAS COUNTY BASSMASTERS	1730 COUNTY ROAD 230	SELMA	AL	36701	BRIAN L. NICHOLS	334-875-4322
DANNELLY FIELD A.N.G. BASS CLUB	P.O. BOX 780843	TALLASSEE	AL	36078	JAMES HAGGARD	334-271-7384
DEMOPOLIS KIWANIS CLUB	1080 VILLA RD	GALLION	AL	36742	JOHNNY BROOKER	334-289-5640
DIXIE BASSMASTERS	1240 ELLISVILLE BLVD.	LAUREL	MS	39440	JAMES CARTER	601-425-3103
ETOWAH ANGLERS BASS CLUB	2276 BURNS ST.	SOUTHSIDE	AL	35907	ALBERT DAVIS	256-442-7446
FAYETTE BASS CLUB	894 COUNTY RD 77	FAYETTE	AL	35555	BEN S. PRINCE	205-904-8226
FISHN FEVER	7660 KALHOKA RD	SARALAND	AL	36571	TERRY HENSON	334-675-6030
FIVE FLAGS BASS CLUB	5680 MULDOON RD	PENSACOLA	FL	32526	WILLIAM MYRICK	850-456-6860
GENEVA COUNTY BASSMASTERS	532 COUNTY RD 266	ENTERPRISE	AL	36330	MIKE McDANIEL	334-894-6109
GEORGIA BASS FEDERATION					DR CARL QUERTERMUS	
GET UP CLUB	678 WILLIAMS RD	AKRON	AL	35441	MIKE GRAY	205-372-9450
GILBERTOWN BASS CLUB	P.O. BOX 183	GILBERTOWN	AL	36908	MIKE THORN	251-843-2668
GREENSBORO LIONS CLUB	P.O. BOX 155	GREENSBORO	AL	36744	BILL HEMSTREET	334-624-4016
HAMILTON BASSMASTERS	P.O. Box 1201	HAMILTON	AL	35570	ROD MOORE	205-921-3741
HILL CREST BASS CLUB	630 ROXIE AVE	OXFORD	AL	36203	CLYDE ABERNATHY	256-835-9412
JVC- AMERICAN CANCER SOCIETY	42 JVC ROAD	TUSCALOOSA	AL	35405	MAX WHITEHEAD	205-554-5355
KOWALIGA	26 RICHARD ST	TALLASSEE	AL	36078	HANK GOLDEN	334-283-6117
L.A. BASSMASTERS	4840 LONG LANE	BAY MINETTE	AL	36507	RAY LONG	251-937-4048
L.A. HOOKSETTERS	8285 COTTAGE HILL RD	MOBILE	AL	36695	JAMES MILES	251-633-6228
LAKE GUNTERSVILLE BASSMASTERS	334 SW 2ND AVE	CARBON HILL	AL	35549	PHIL EKENA	205-924-0256
LAY LAKE BASSMASTERS	888 MACEDONIA LOOP	SYLACAUGA	AL	35151	NEAL GOZA	256-345-2550
LIMESTONE LINKERS	21889 DAVID DRIVE	ELKMONT	AL	35620	GERALD RICKRODE JR	256-233-8943
LOCUSTPARK BASSMASTERS	7983 NO. LAKE DRIVE	TRUSSVILLE	AL	35173	RALPH HEAD	205-653-9143
MASTERS BASS	6216 BRANDY RUN ROAD N.	MOBILE	AL	36608	CHIPPER MATHIS	251-344-9363
MERCEDES-BENZ BASS MEISTERS	P.O. BOX 298	FOSTERS	AL	35463	GERALD CAPPS	205-339-9214
MONROE COUNTY BASS ANGLERS	P.O. BOX 486	EXCEL	AL	36439	LEON BLACK	334-765-2548
NAHOOLA BASSMASTERS	37 WHITE OAK DR	THOMASVILLE	AL	36784	JAMES MORGAN	334-656-5322
NORTH ALABAMA TOURNAMENT ANGLERS	11015 CHARRING CT	HUNTSVILLE	AL	35803	SCOTT MYERS	256-883-1088
NORTHWEST BASS CLUB	159 ASHMORE CRT SE	CALHOUN	GA	30701	DAVID CHILDRESS	706-602-0623
PEMCO BASS CLUB	9 MONTE BELLO LANE	MONTEVALLO	MS	39155	JOHN E. SIPPOLA	205-663-8994
PHILADELPHIA BASS CLUB	10480 RD 365	PHILADELPHIA	MS	39350	RICKY FILES	601-656-3721
PICKENS COUNTY BASS MASTERS	304 FALCON ROAD	REFORM	AL	35481	MIKE OWENS	205-375-2182
PIPEMILL BASSMASTERS	350 SPRING TRAIL	WARRIOR	AL	35180	BILLY J. LAWSON	205-647-2871
ROANOKE BASS HUNTERS	91 CO RD 6911	ROANOKE	AL	36274	DAVID A. BROWN	256-357-2669
SMITH LAKE DAM	3280 COUNTY ROAD 201	CRANE HILL	AL	35063	RED BERRY	256-747-8280
TENNESSEE RIVER BASS CLUB	P.O. BOX 255	CHEROKEE	AL	35616	RICHARD PHILLIPS	256-370-7210
TENNESSEE VALLEY HAWG HUNTERS	2825 MONTROSE DR S.W.	DECATUR	AL	35603	JOHN SIVLEY	256-350-9193
TENNESSEE WILDLIFE RESOURCES					MIKE BRAMLETT	
TRI-CITY ANGLERS	3151 CALAIS ST.	MOBILE	AL	36606	MARK ROTCH	251-478-1024
TRI-COUNTY BASS CLUB	6649 OLD SELMA RD	MONTGOMERY	AL	36108	ROY LEWIS	334-263-0099
WEDOWEE BASSMASTERS	P.O. BOX 478	WEDOWEE	AL	36278	K. GILLAM	256-435-9899
WEISS LAKE BASSMASTERS	29 RIDGEFIELD DR S.E.	SILVERCREEK	GA	30173	BEN EARLY	706-235-0682

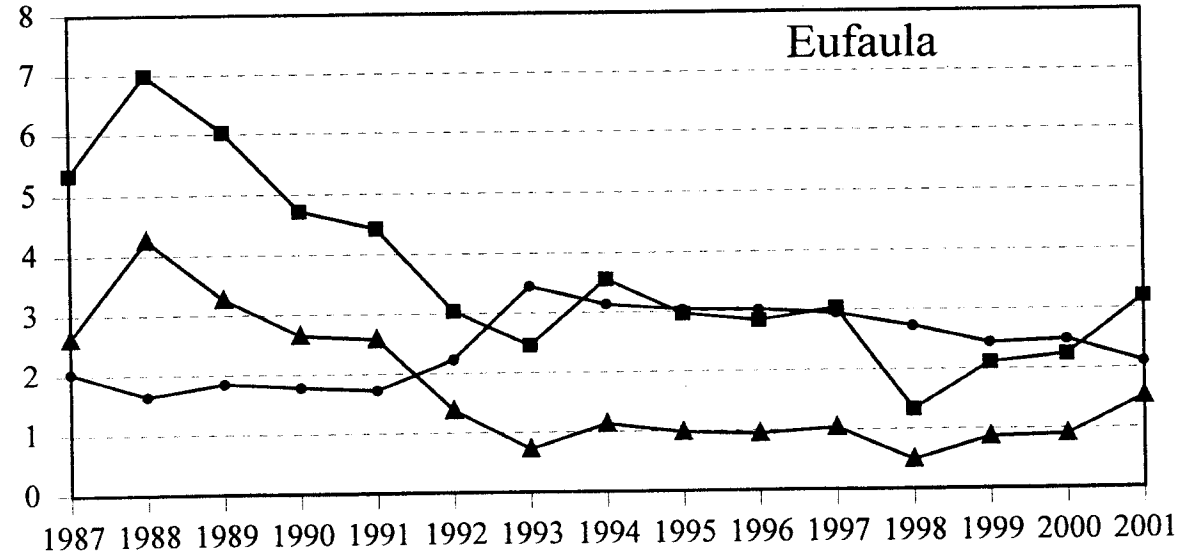
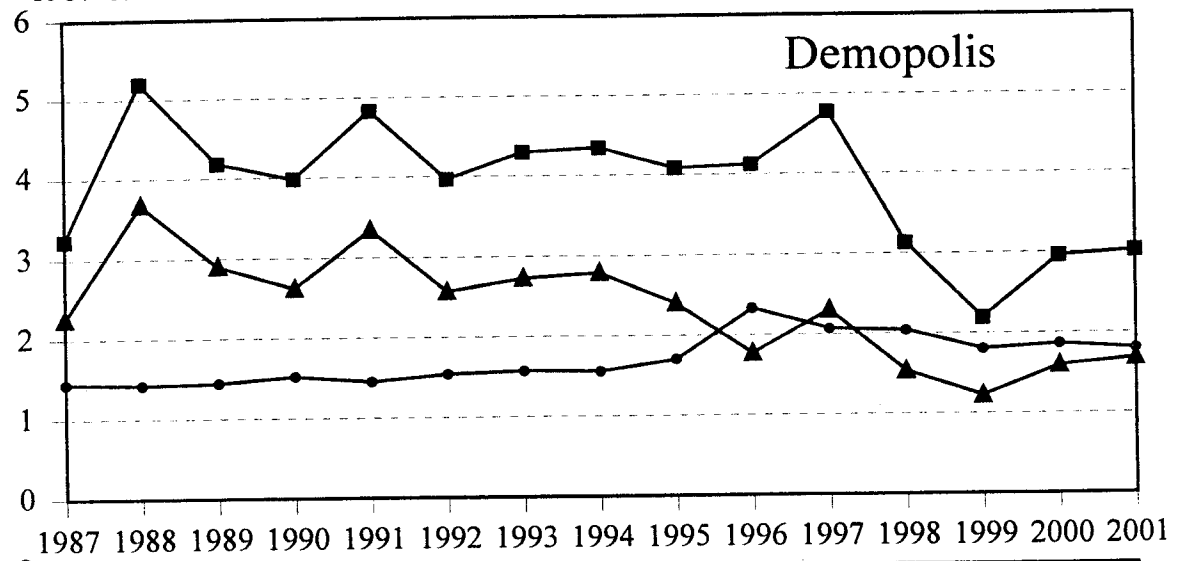
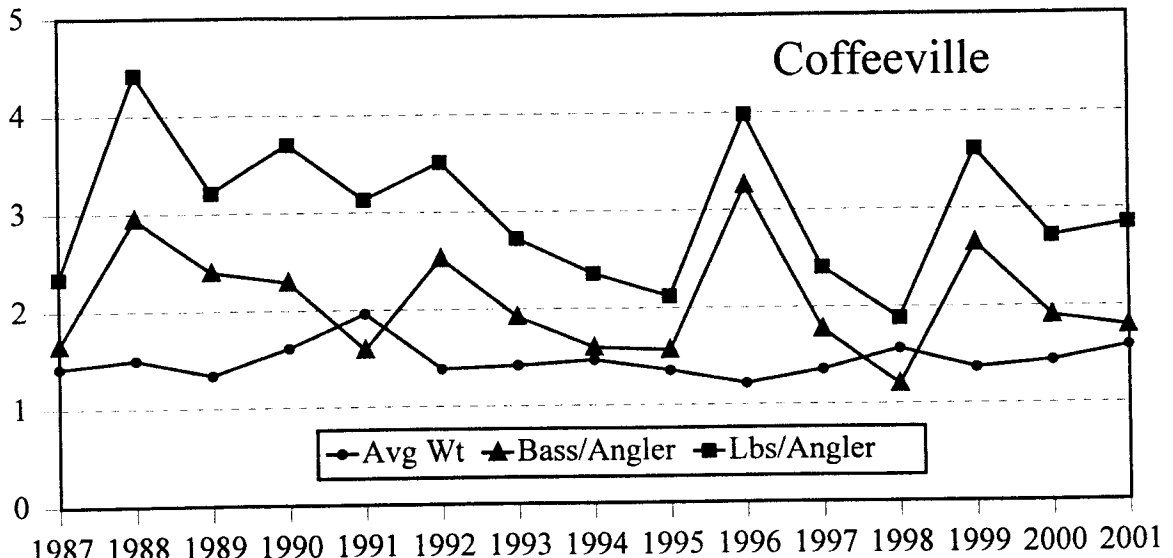
Table 5. Bass eight pounds and larger from 2001 B.A.I.T. tournament reports.

WEIGHT(LBS)	DATE	LOCATION	CLUB
9.13	10-Feb	Eufaula	Georgia Bass Federation
8.73	6-Oct	Guntersville	Tennessee Wildlife Resources
8.62	19-May	Logan Martin	Alabama Bass Federation
8.00	10-Mar	Eufaula	Georgia Bass Federation

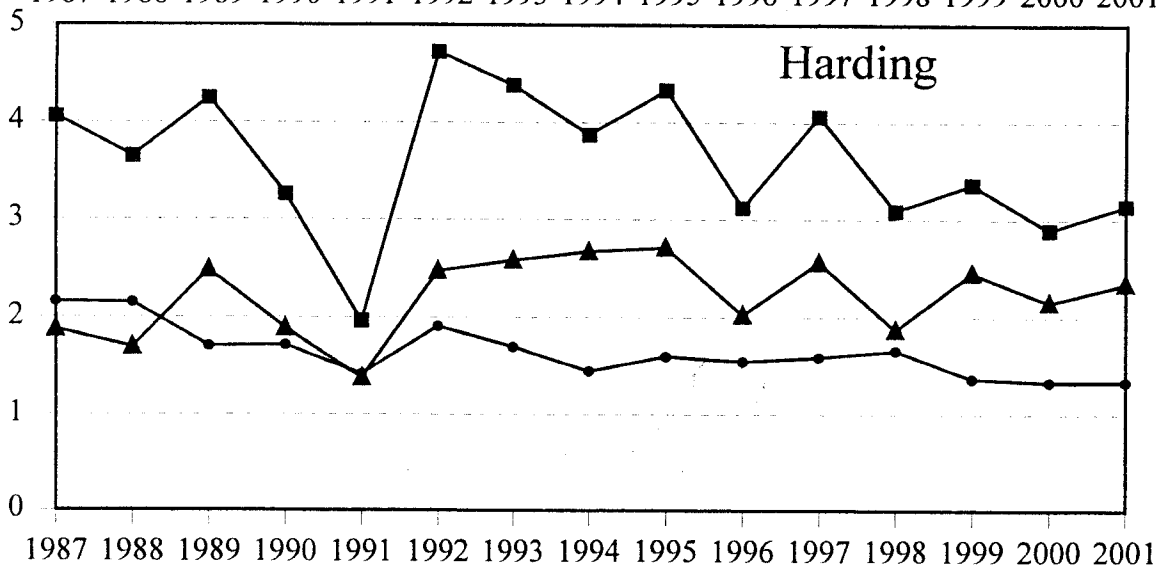
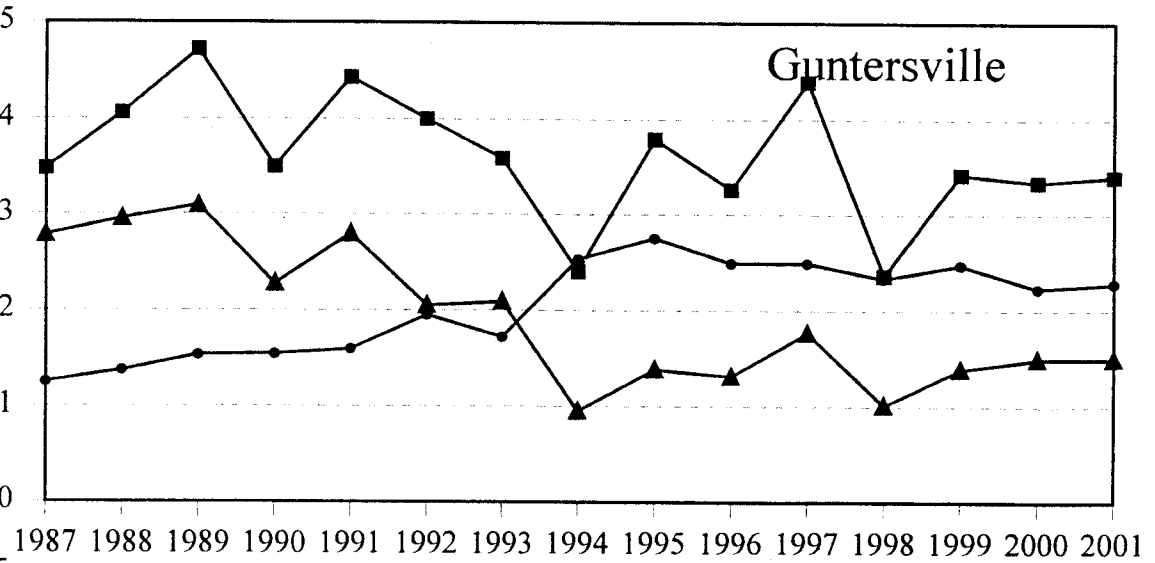
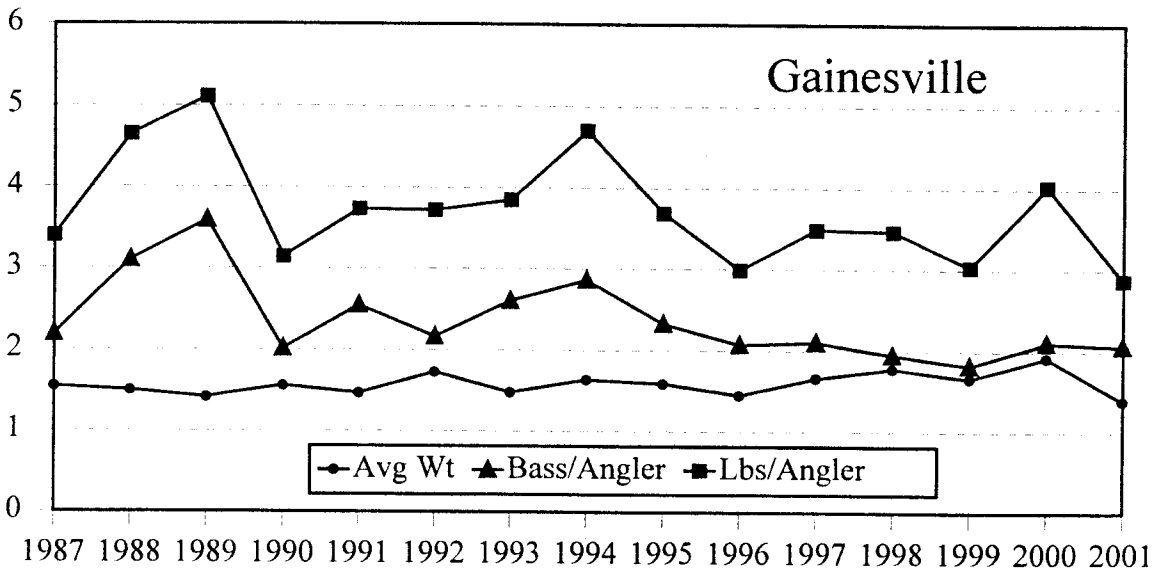
Figure 1. Annual catch for B.A.I.T. tournaments



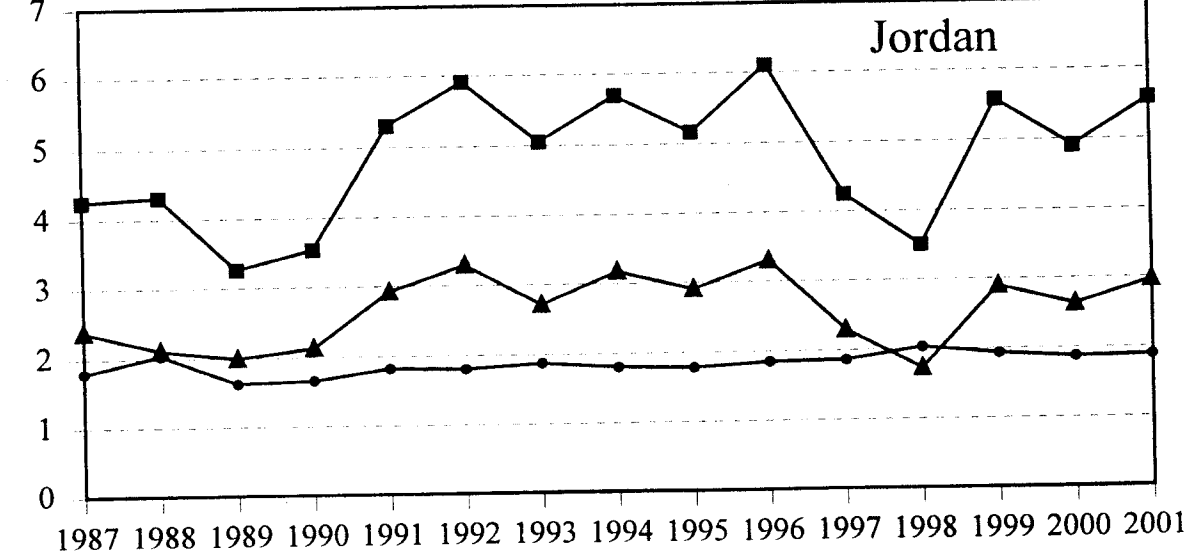
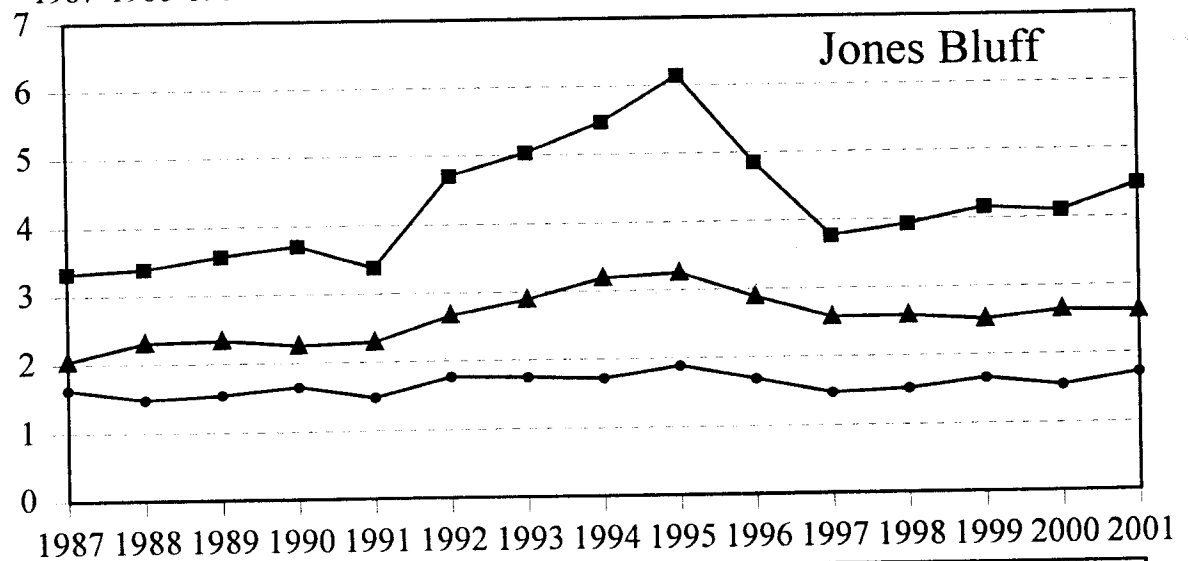
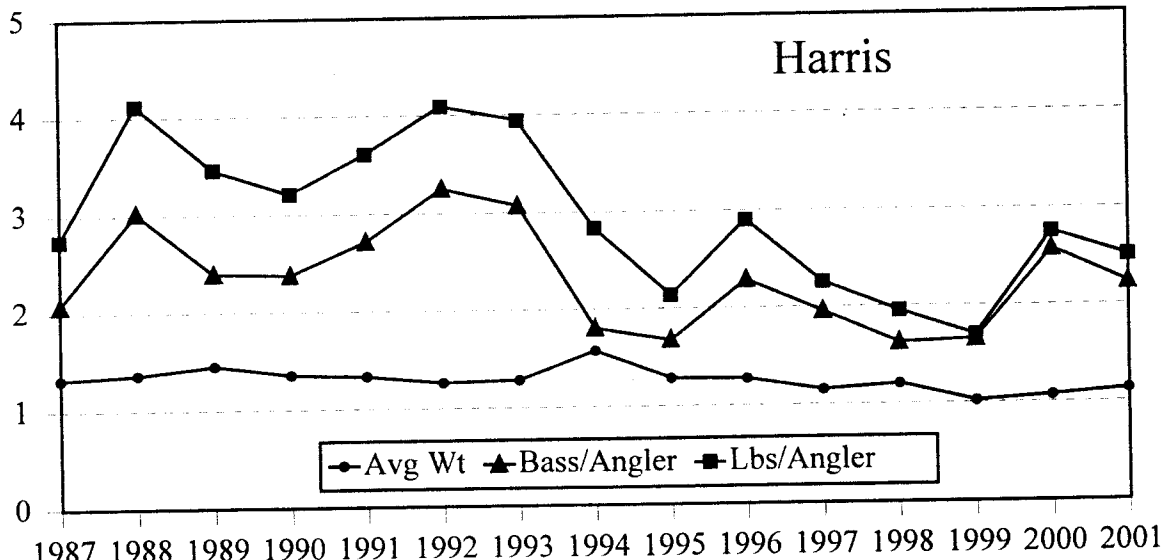
POUNDS OR NUMBER



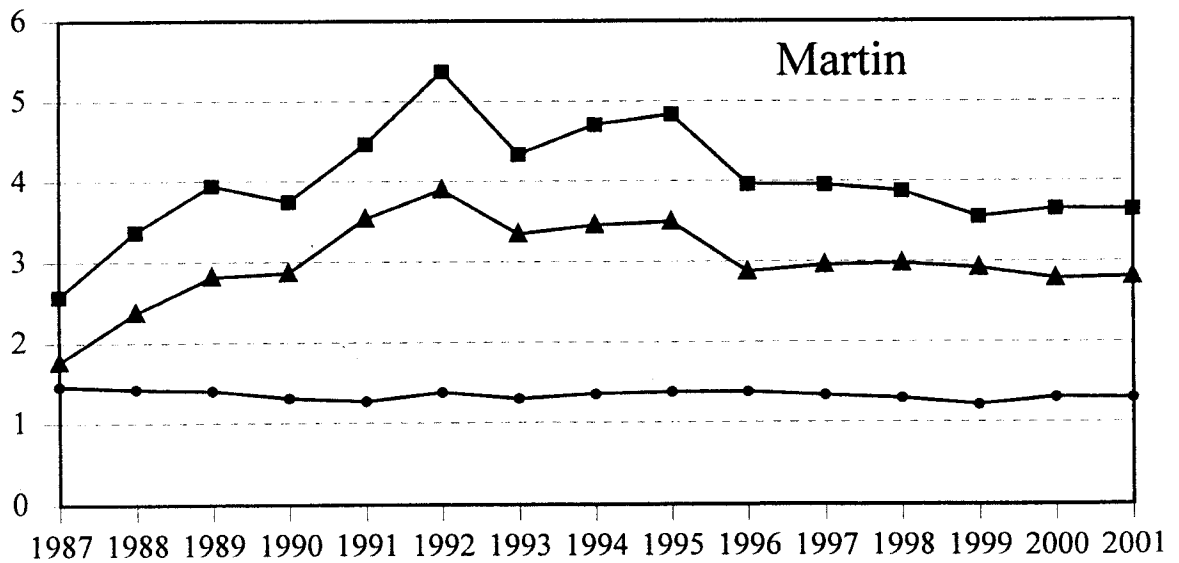
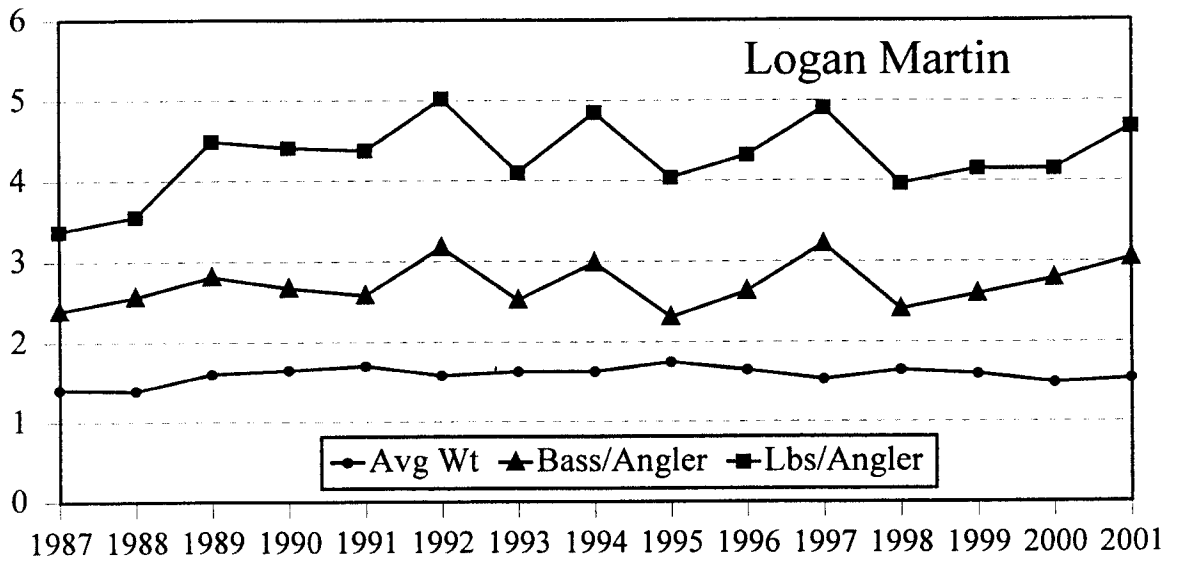
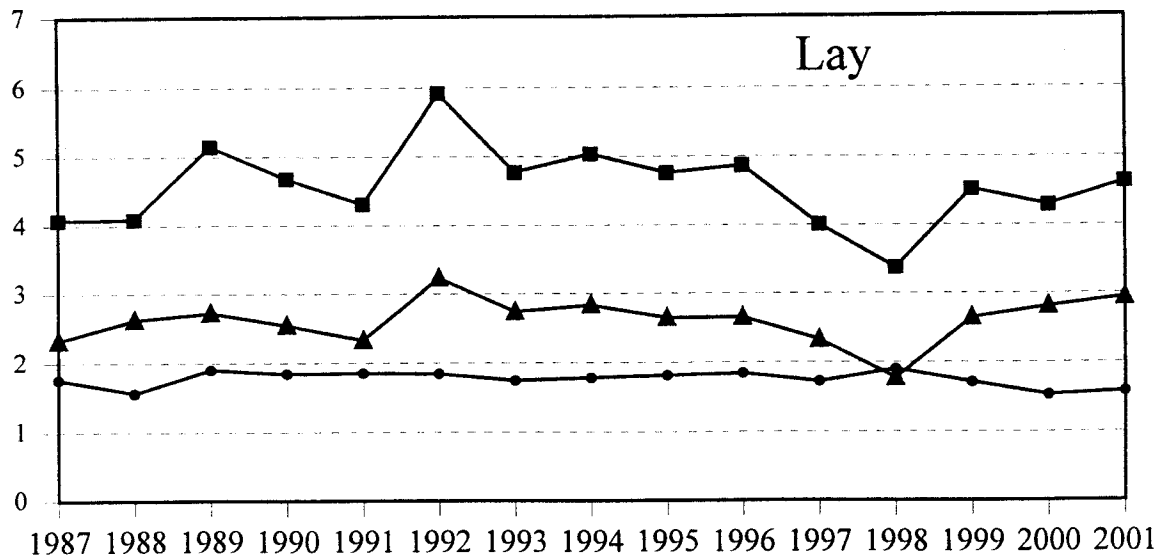
POUNDS OR NUMBER



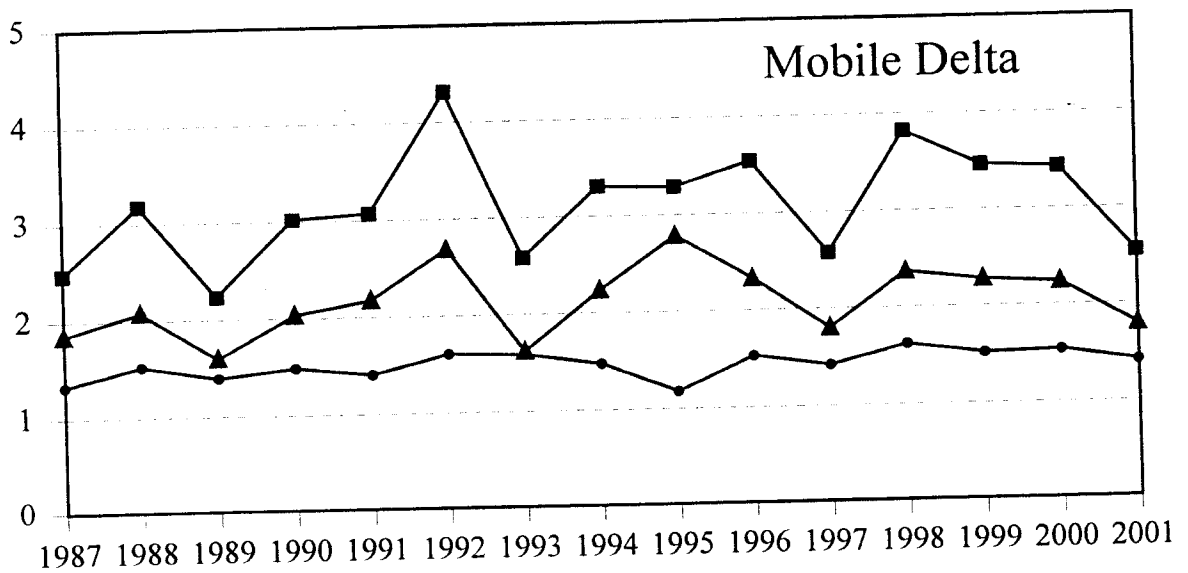
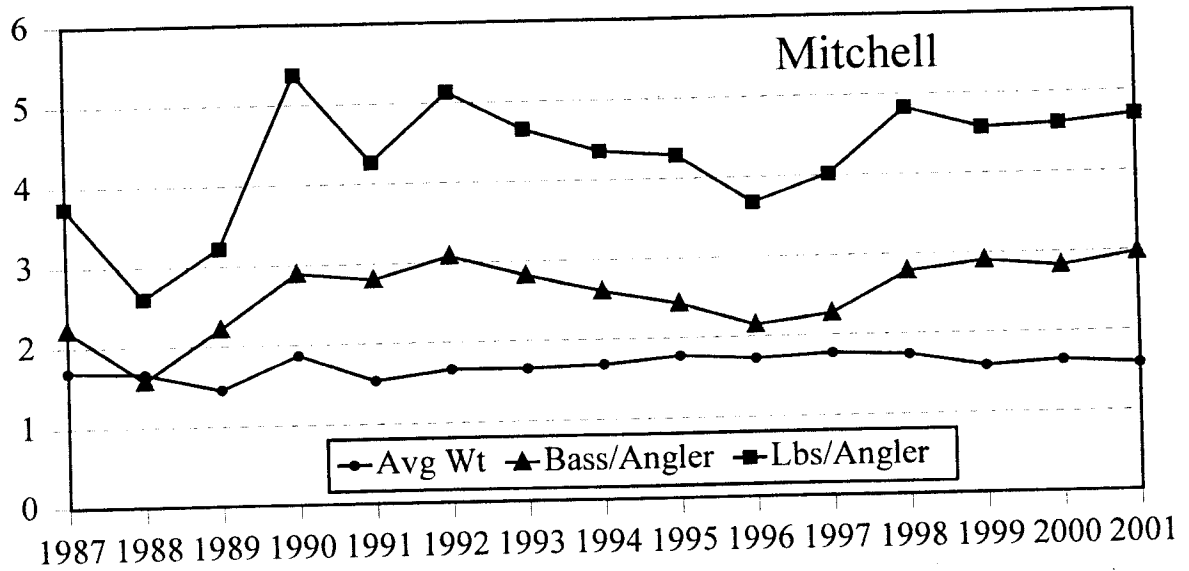
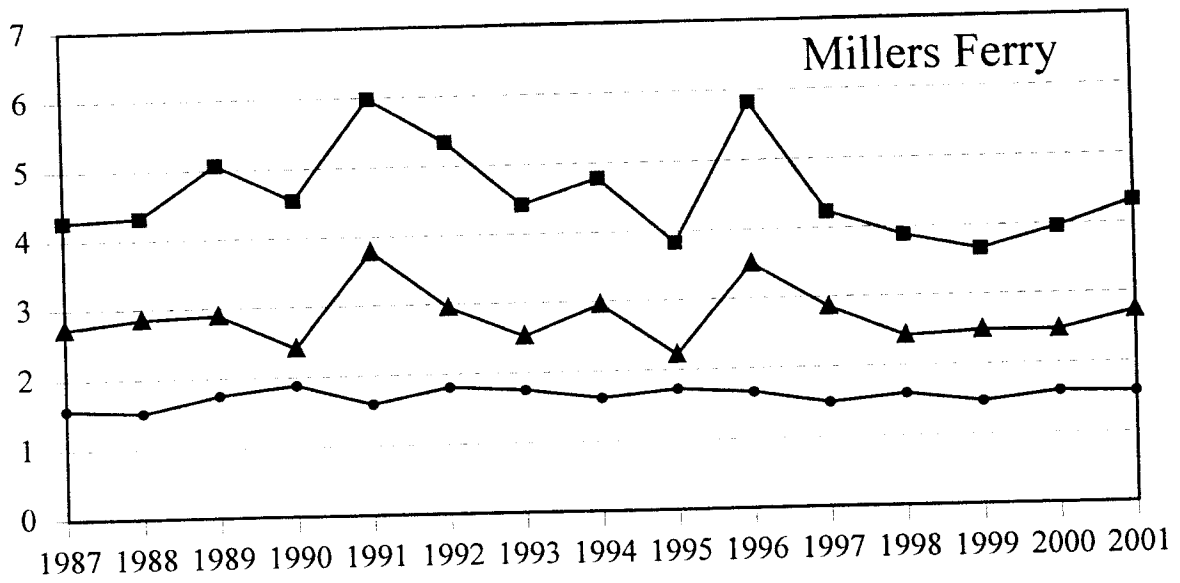
POUNDS OR NUMBER



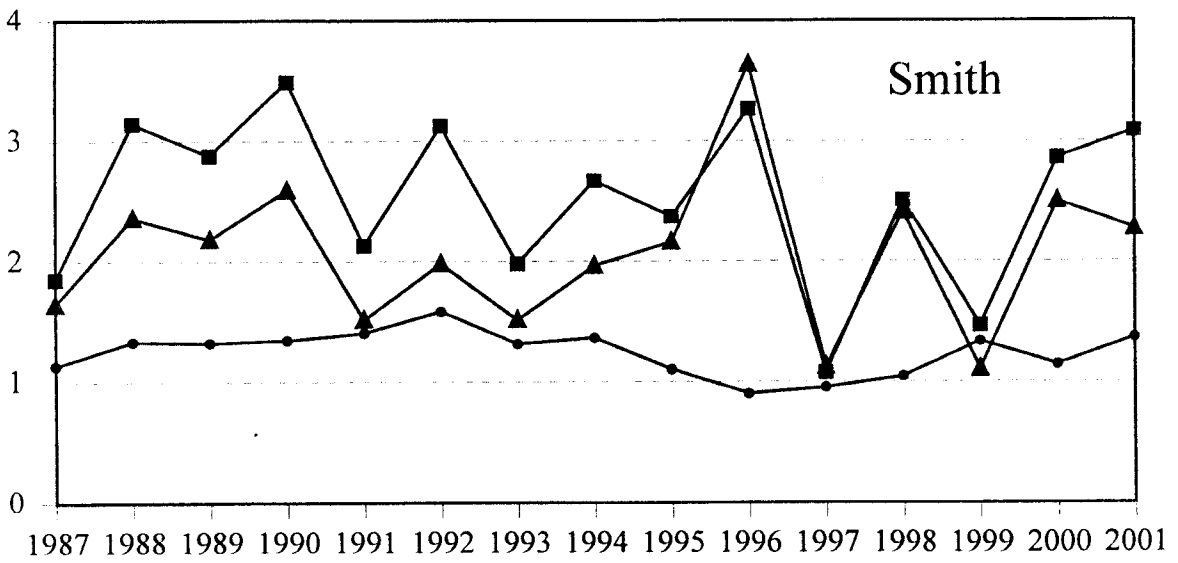
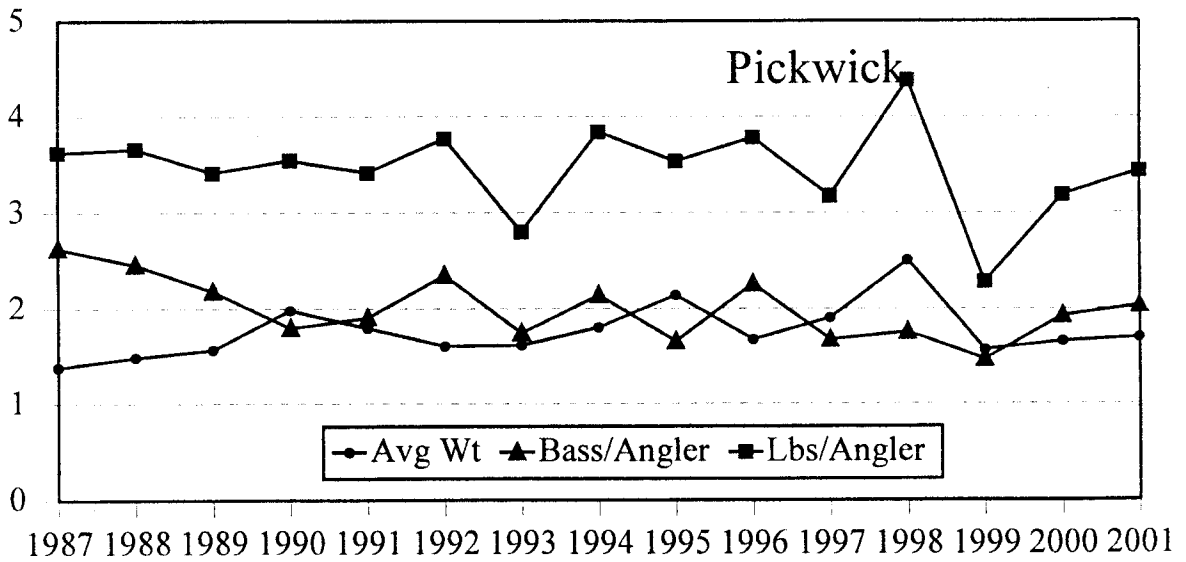
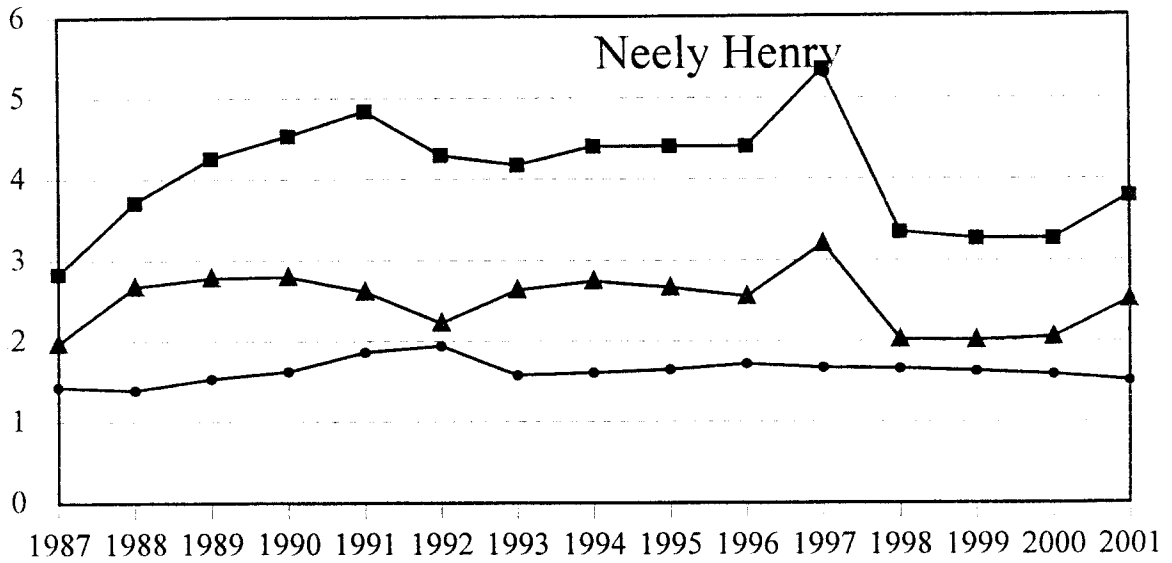
POUNDS OR NUMBER



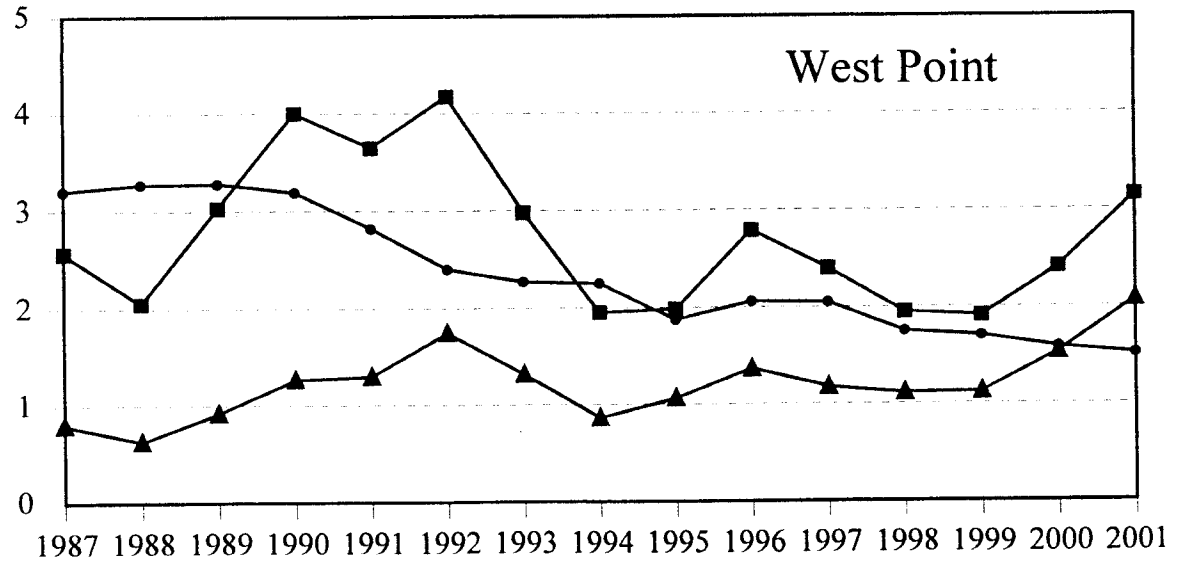
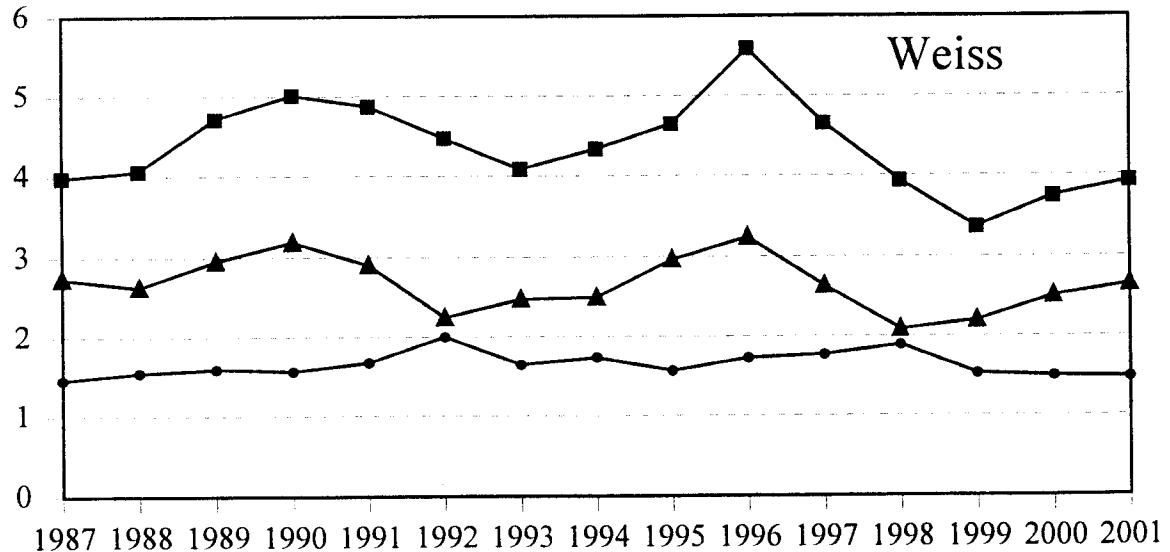
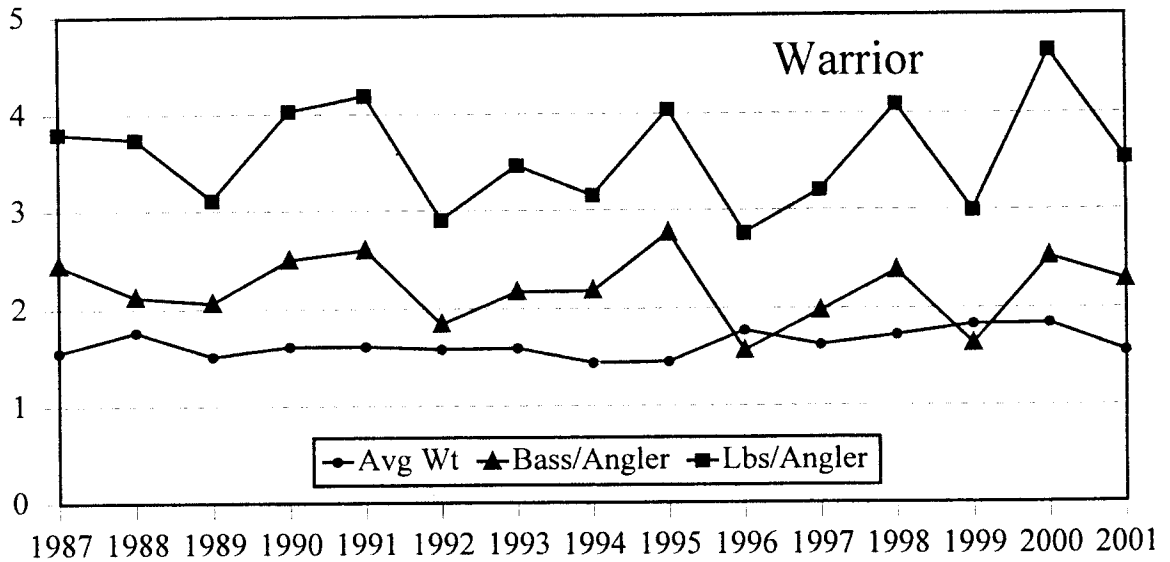
POUNDS OR NUMBER



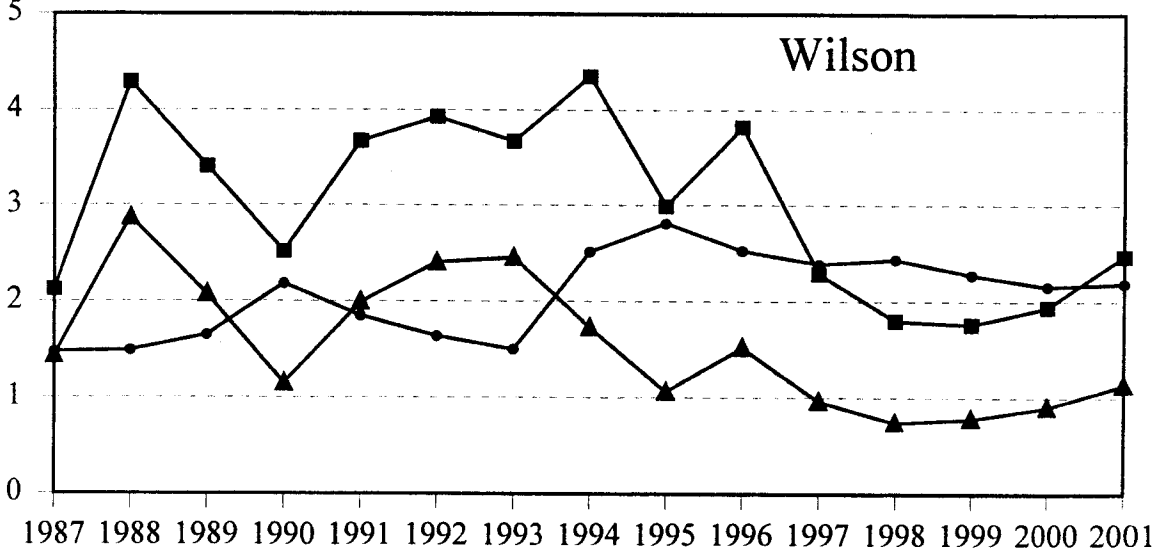
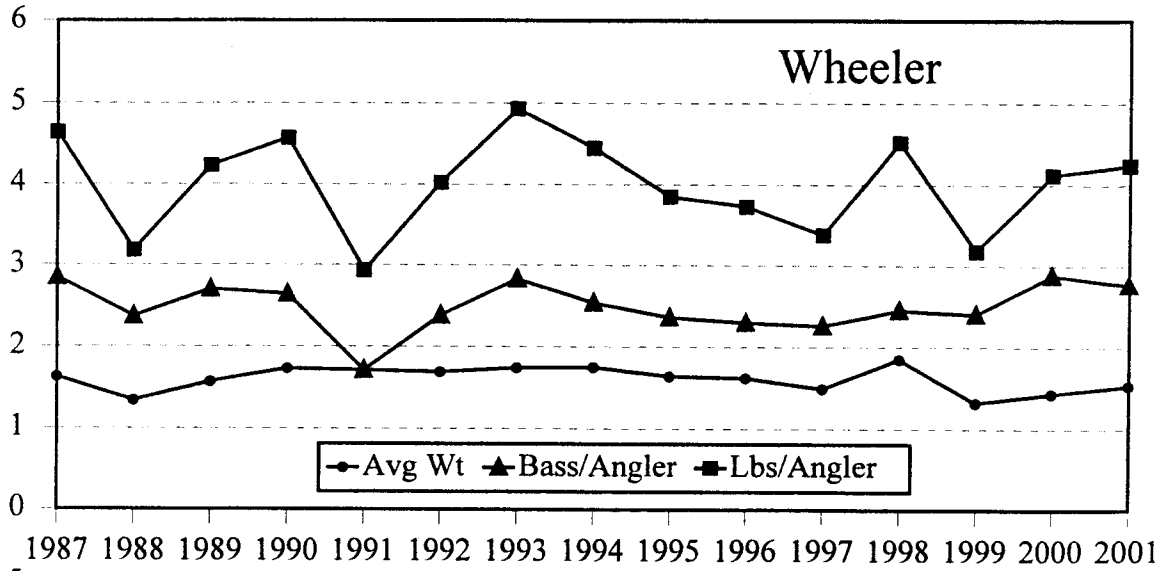
POUNDS OR NUMBER



POUNDS OR NUMBER



POUNDS OR NUMBER



The Department of Conservation and Natural Resources does not discriminate on the basis of race, color, religion, age, gender, national origin, or disability in its hiring or employment practices nor in admission to, or operations of its programs, services, or activities. This publication is available in alternative formats.

